



# 12v inverter connected to battery





## Overview

---

Connect the inverter's positive and negative terminals to the battery, add a fuse on the positive line, and double-check polarity. Match inverter and battery voltage (e.g., 12V to 12V). Always use a fuse or circuit breaker on the positive line. Use thick cables (4 AWG or lower) to.

Connect the inverter's positive and negative terminals to the battery, add a fuse on the positive line, and double-check polarity. Match inverter and battery voltage (e.g., 12V to 12V). Always use a fuse or circuit breaker on the positive line. Use thick cables (4 AWG or lower) to.

Wiring an inverter to a battery isn't rocket science—but get it wrong, and you could fry your gear or drain your power fast. This quick guide shows you how to do it safely and efficiently. Whether you're setting up for backup power or going off-grid, here's how to get it right. How to wire an.

An inverter is a device that converts direct current (DC) from a battery into alternating current (AC) for powering household appliances. Batteries, on the other hand, store the DC power generated by solar panels or the grid. Together, they form a robust power backup system that keeps your lights.

Connecting inverters to batteries is an important part of an off-grid power solution or backup power system, and the right connections ensure that the system runs efficiently. This article will explore in detail how inverters and batteries work together, how to connect them correctly, and how to.

Yes, you can attach a small inverter directly to a battery, but doing it safely requires understanding voltage compatibility, wire sizing, and overload risks. Many DIYers assume it's as simple as clipping on cables—until sparks fly or devices fail. Modern lithium batteries and high-efficiency.

We'll explore how to connect inverter to battery, its purpose, and the tools needed for a proper and safe connection. Connecting an inverter to a battery is a crucial step in setting up a reliable off-grid power solution or backup energy system. This setup ensures that the energy stored in the.

Yes, you can hook a power inverter directly to a battery. Ensure the inverter's



power rating is compatible with the battery's capacity. This connection supplies reliable power to your vehicle. Always prioritize safety and check the current draw to prevent any damage to the starting battery.



## 12v inverter connected to battery

---

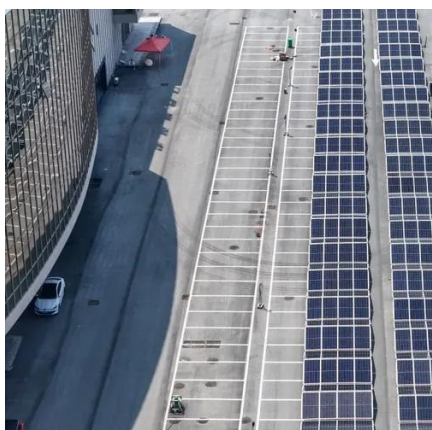


### [How to Connect an Inverter to a Battery: Step-by ...](#)

Learn how to safely and efficiently connect an inverter to a battery with our step-by-step guide. Includes brand-specific tips for Solis, ...

### [How to Safely Connect a Battery to an Inverter: A ...](#)

Learn how to safely connect your batteries to your inverter with our guide. Avoid common wiring mistakes to optimize performance ...



### [How to Safely Connect a Battery to an Inverter: A Step-by-Step ...](#)

Learn how to safely connect your batteries to your inverter with our guide. Avoid common wiring mistakes to optimize performance and extend system life.

### [How to Connect an Inverter to a Battery: Step-by-Step Guide for ...](#)

Learn how to safely and efficiently connect an inverter to a battery with our step-by-step guide. Includes brand-specific tips for Solis, Deye,





Megarevo, SRNE, and more.



### [Can I Attach My Small Inverter Directly to the Battery?](#)

Yes, you can attach a small inverter directly to a battery, but doing it safely requires understanding voltage compatibility, wire sizing, and overload risks. Many DIYers assume it's ...



### **Power Inverter: Can I Hook It Directly to the Battery for Safe**

Yes, you can hook a power inverter directly to a battery. Ensure the inverter's power rating is compatible with the battery's capacity. This connection supplies reliable power to your ...



### **How to connect inverter to battery: a step-by-step guide for safe ...**

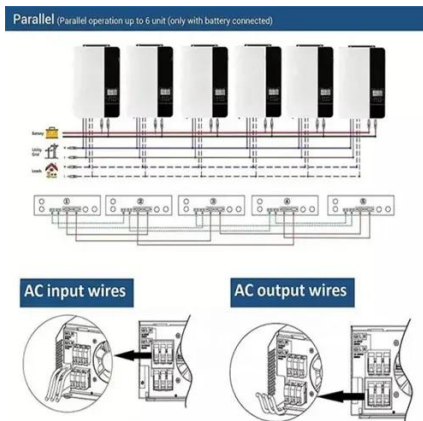
We'll explore how to connect inverter to battery, its purpose, and the tools needed for a proper and safe connection. Connecting an inverter to a battery is a crucial step in setting ...





## [How to Connect a Large or Small Inverter to a Battery](#)

This blog answers questions about which inverters can be powered by 12V DC accessory outlets (cigarette lighter sockets) and which require wiring directly to a battery.



## **Inverter Battery Connection: Essential Tips For Safe And Efficient**

When it comes to setting up an inverter system, one element stands out for its critical importance--the inverter battery connection. For laymen, enthusiasts, product buyers, and ...

## [Connecting Multiple Batteries to an Inverter: Easy Guide](#)

In theory, there is no maximum limit on the amount of batteries you can connect to your inverter in parallel. In reality, you don't want to go wild as you will run into problems like the amount of ...



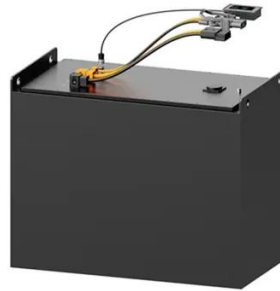
## [How to Wire Inverter to Battery - No Sparks. Just Power](#)

Wiring an inverter to a battery isn't rocket science--but get it wrong, and you could fry your gear or drain your power fast. This quick guide shows you how to do it safely and ...



## [How to Wire Inverter to Battery - No Sparks, Just ...](#)

Wiring an inverter to a battery isn't rocket science--but get it wrong, and you could fry your gear or drain your power fast. This quick ...



## [How to Connect a Power Inverter to a Battery.](#)

How to connect a power inverter to a battery. If you want to connect an inverter to a battery, you must first make sure the voltage of the battery is compatible to the inverter,



## Contact Us

---

For inquiries, pricing, or partnerships:

<https://sccd-sk.eu>

Phone: +32 2 808 71 94

Email: [info@sccd-sk.eu](mailto:info@sccd-sk.eu)

Scan QR code for WhatsApp.

