



# 12v lithium iron phosphate battery pack charging management solution





## Overview

---

To fully charge a LiFePO<sub>4</sub> battery, use a two-stage method: constant current (CC) followed by constant voltage (CV). Charge up to 14.6V (for a 12V system), then let the voltage stabilize without overcharging. LiFePO<sub>4</sub> batteries do not require trickle charging or float charging like.

To fully charge a LiFePO<sub>4</sub> battery, use a two-stage method: constant current (CC) followed by constant voltage (CV). Charge up to 14.6V (for a 12V system), then let the voltage stabilize without overcharging. LiFePO<sub>4</sub> batteries do not require trickle charging or float charging like.

Investing in a LiFePO<sub>4</sub> battery management system (BMS) is a great way to ensure a safe, efficient, and long-lasting operation of your lithium iron phosphate batteries. While LiFePO<sub>4</sub> chemistry is inherently stable, the BMS acts as the brain supervising proper charging, discharging, monitoring and.

LiFePO<sub>4</sub> batteries have become the go-to choice for American homeowners, solar professionals, and RV owners when storing clean energy, running off-grid systems, or powering electric vehicles. However, using these advanced batteries requires more than plugging into any power source. This guide.

Lithium Iron Phosphate (LiFePO<sub>4</sub>) batteries are increasingly favored for their excellent thermal stability, long lifespan, and robust safety profile. However, to get the best out of your LiFePO<sub>4</sub> battery, you must follow the correct charging methods. This guide breaks down how to charge LiFePO<sub>4</sub>.

If you're exploring lithium iron phosphate (LiFePO<sub>4</sub>) batteries, you know they offer more cycles, consistent power, and lower weight than comparable SLA batteries—and they can charge up to four times faster. But how exactly do you charge a lithium battery?

Power Sonic recommends you select a charger.

If you're using a LiFePO<sub>4</sub> (lithium iron phosphate) battery, you've likely noticed that it's lighter, charges faster, and lasts longer compared to lead-acid batteries (LiFePO<sub>4</sub> is rated to last about 5,000 cycles – roughly ten years). To ensure your battery remains in top condition for as long as.

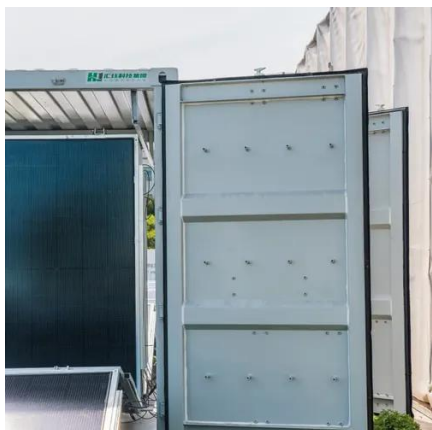


From charging protocols to wiring techniques, and from versatile applications to everyday usage tips, we've got you covered. Table of Contents 1. Confirm Compatibility Ensure that you're using chargers specifically designed for lithium iron phosphate (LiFePo4) batteries to avoid damage or.



## 12v lithium iron phosphate battery pack charging management solution

---



### [Charging LiFePO4 Battery: Step-by-Step Guide](#)

This hands-on guide walks you through charging LiFePO4 battery safely with the right voltage, charger, and maintenance for long battery life.

### How to Charge Lithium Iron Phosphate Batteries , Power Sonic

In standby applications, lithium's low self-discharge lets it retain nearly full capacity for 6-12 months without charging. For longer storage, use a voltage-based topping charge--especially ...



### How to Charge a LiFePO4 Battery

Learn how to charge a LiFePO4 battery for optimal performance and longer life. Avoid mistakes and use the right charger for ...

### How to Charge a LiFePO4 Battery

Learn how to charge a LiFePO4 battery for optimal performance and longer life. Avoid mistakes and use the right charger for safe, reliable power.



## **lithium charging instruction manual from scratch new sized 1**

Most lead-acid battery chargers can be used to charge lithium iron phosphate batteries (LiFePO<sub>4</sub>) as long as they are within the appropriate voltage guidelines. AGM and Gel algorithms ...



## [How to Charge Lithium Iron Phosphate Batteries](#)

In standby applications, lithium's low self-discharge lets it retain nearly full capacity for 6-12 months without charging. For longer storage, use a ...



## **LifePO4 BMS: The Expert Guide**

LifePO4 BMS units are designed specifically for the lower nominal voltage, flat discharge curve and thermal stability of lithium iron ...







## [How to charge Lithium Iron Phosphate \(LiFePO4\) ...](#)

To fully charge a LiFePO4 battery, use a two-stage method: constant current (CC) followed by constant voltage (CV). Charge up to ...



## **LifePO4 BMS: The Expert Guide**

LifePO4 BMS units are designed specifically for the lower nominal voltage, flat discharge curve and thermal stability of lithium iron phosphate cells. This allows simpler ...

## [Essential Tips for LiFePO4 Battery Charging, ...](#)

To safely charge a LiFePO4 battery with an alternator, use a DC to DC charger to regulate the output and match the battery's charging ...



## [Essential Tips for LiFePO4 Battery Charging, Wiring, ...](#)

To safely charge a LiFePO4 battery with an alternator, use a DC to DC charger to regulate the output and match the battery's charging requirements. A DC to DC charger is ...



## [Charging a Lithium Iron Phosphate \(LiFePO4\) Battery Guide](#)

How Does the Charging Process Work for LiFePO4 Batteries? The charging process for LiFePO4 batteries typically follows a CCCV (Constant Current Constant Voltage) ...



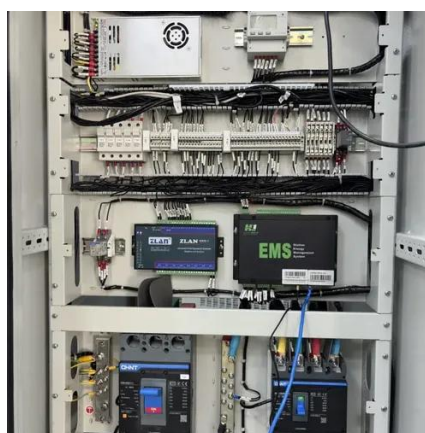
## [Charging a Lithium Iron Phosphate \(LiFePO4\) ...](#)

How Does the Charging Process Work for LiFePO4 Batteries? The charging process for LiFePO4 batteries typically follows a CCCV ...



## [How to Charge LiFePO4 Batteries Safely and Effectively](#)

Learn how to charge LiFePO4 batteries correctly to maximize lifespan, safety, and performance. Discover best practices, voltage limits, and more.



## [How to Charge Lithium iron Phosphate \(LiFePO4\) ...](#)

Most lithium iron phosphate (LiFePO4) battery packs come with a built-in battery management system (BMS) that handles battery cell ...





## How to Charge Lithium iron Phosphate (LiFePO4) Battery?

Most lithium iron phosphate (LiFePO4) battery packs come with a built-in battery management system (BMS) that handles battery cell balancing. If your battery pack does not ...



## How to charge Lithium Iron Phosphate (LiFePO4) Batteries?

To fully charge a LiFePO4 battery, use a two-stage method: constant current (CC) followed by constant voltage (CV). Charge up to 14.6V (for a 12V system), then let the voltage ...







## Contact Us

---

For inquiries, pricing, or partnerships:

<https://sccd-sk.eu>

Phone: +32 2 808 71 94

Email: [info@sccd-sk.eu](mailto:info@sccd-sk.eu)

Scan QR code for WhatsApp.

