



# 150m wireless communication green base station





## Overview

---

Are green cellular base stations sustainable?

This study presents an overview of sustainable and green cellular base stations (BSs), which account for most of the energy consumed in cellular networks. We review the architecture of the BS and the power consumption model, and then summarize the trends in green cellular network research over the past decade.

What is a green cellular network?

Most studies on green cellular networks have adopted ideal models. As its name implies, the green communication initiative aims to make cellular networks “greener” by reducing their power consumption using the aforementioned approaches.

Are cellular network operators moving towards green cellular BS?

Figure 10 reveals that many cellular network operators in the world have still not shifted toward green cellular BS. Most of these operators are located in developing countries with limited electricity supply and unreliable electric grids. The financial issues in these countries must be investigated further. 4.5.

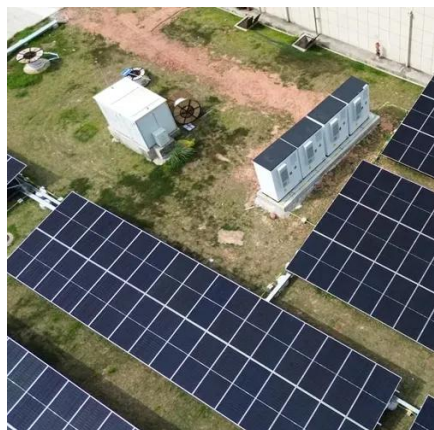
What is a signaling base station?

A single signaling base station can support multiple signaling cells focused on processing the signaling plane and serving as anchors for Radio Resource Control (RRC) functionality. This vertically segmented architecture optimizes network resources, reduces costs, and minimizes energy consumption.



## 150m wireless communication green base station

---



### [Green Wireless Communication , Wireless Personal ...](#)

A wide range of techniques and technologies are covered in this review article that focuses on innovative strategies, network architectures, and energy-efficient wireless ...

### **Green and Sustainable Cellular Base Stations: An Overview and ...**

We review the architecture of the BS and the power consumption model, and then summarize the trends in green cellular network research over the past decade.



### **The world's first realization of wireless base stations with lower**

When wireless base stations using a high-frequency band are densely deployed along roads or railroad tracks, if the number of cars and trains targeted by wireless terminals is ...



### **Comba Telecom Releases 4G/5G (8TR) Green Integrated Base Station**

...

To support the low-carbon deployment of 5G networks, Comba Telecom has launched a high-



end 4G/5G (8TR) integrated Base Station Antenna (BSA), which meets the capacity and coverage ...



### Comba Telecom Releases 4G/5G (8TR) Green Integrated Base ...

To support the low-carbon deployment of 5G networks, Comba Telecom has launched a high-end 4G/5G (8TR) integrated Base Station Antenna (BSA), which meets the capacity and coverage ...

### Teltronic Introduces New Green Communications ...

Spain's Teltronic has introduced its new GBS (Green Base Station) during the Critical Communications World event. This next ...



### **Green Wireless Communication , Wireless Personal Communications ...**

A wide range of techniques and technologies are covered in this review article that focuses on innovative strategies, network architectures, and energy-efficient wireless ...





## Comba Telecom Introduces High Efficiency, Low Carbon-Footprint Base

Featuring the industry-leading low-loss, high-efficiency, and low-carbon Green Antenna, the Helifeed(TM) Green Antenna product series can extend the mobile coverage or as ...



### The world's first realization of wireless base ...

When wireless base stations using a high-frequency band are densely deployed along roads or railroad tracks, if the number of cars and ...

### Green Radio Communication Networks: Base station power ...

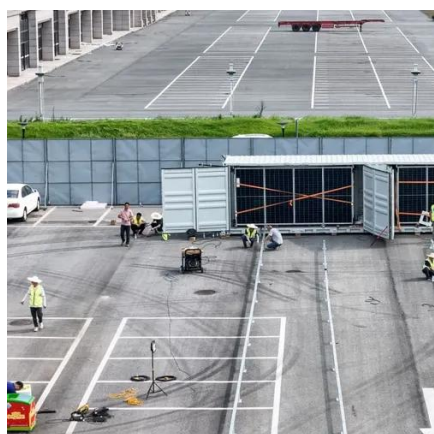
This book serves as a one-stop reference for key concepts and design techniques for energy-efficient communications and networking and provides information essential for the design of ...



Standard 20ft containers



Standard 40ft containers



### Sustainable Base Station Deployments

Today, wireless base-stations consume a lot of power and contribute significantly to the carbon footprint of wireless industry (1.4%), which compares to that of aviation industry (2%).





## Research on future 6G green wireless networks

It is imperative to thoroughly evaluate current state and challenges facing green and low-carbon mobile communication network technologies as well as delve into potential energy ...



## Our communication green base station

Ericsson made a point of its green credentials at the recent Mobile World Congress, and launched a "green" base station design back in 2007. Its commitment extends from materials used in ...

## Teltronic Introduces New Green Communications Base Station

Spain's Teltronic has introduced its new GBS (Green Base Station) during the Critical Communications World event. This next-generation TETRA base station integrates ...



## Comba Telecom Introduces High Efficiency, Low ...

Featuring the industry-leading low-loss, high-efficiency, and low-carbon Green Antenna, the Helifeed(TM) Green Antenna product series ...



## Contact Us

---

For inquiries, pricing, or partnerships:

<https://sccd-sk.eu>

Phone: +32 2 808 71 94

Email: [info@sccd-sk.eu](mailto:info@sccd-sk.eu)

Scan QR code for WhatsApp.

