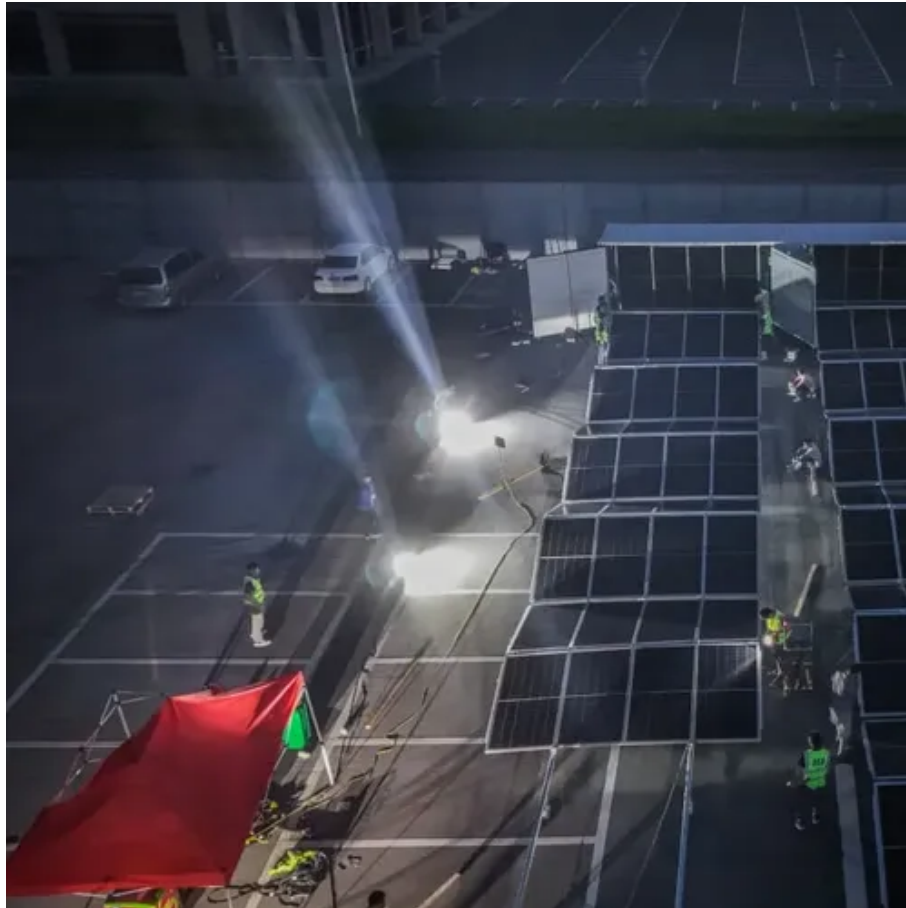




200W solar maximum power





200W solar maximum power



[What Can A 200 Watt Solar Panel Power? A Complete Guide](#)

In general, the short-circuit current of a 12V-200W solar panel is usually between 9.5 and 11 Amps, depending on the panel. The short-circuit current rating of a 24V-200W solar ...

[200W Solar Panel Guide \(2025\): Real Output. ...](#)

In real life, a 200W solar panel produces roughly 0.8-1.2 kWh/day in good-sun regions with sensible tilt and an MPPT controller. In Massachusetts, ...



[All You Need to Know About 200w Solar Panels](#)

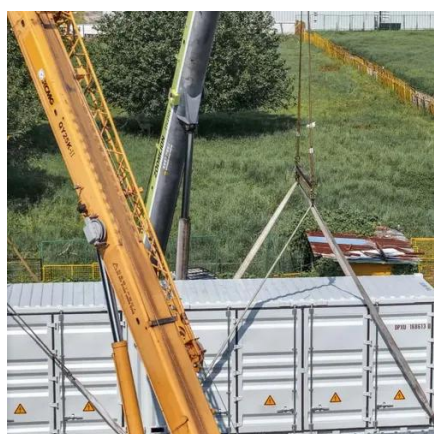
Most 200W panels operate at about 18-20 volts maximum power point voltage, making them compatible with common 12V battery systems when used with proper charge ...

[200 Watt Solar Panel: What Will It Run in Your Home?](#)

How Much Power Does a 200W Solar Panel Actually Produce? A 200-watt solar panel is labeled as such because that's its maximum



output under perfect conditions: bright, ...



[200W Solar Panel Guide \(2025\): Real Output, What It Runs, ...](#)

In real life, a 200W solar panel produces roughly 0.8-1.2 kWh/day in good-sun regions with sensible tilt and an MPPT controller. In Massachusetts, expect more like ~0.5-0.9 kWh/day ...

[How Many Power, Volts and Amps does a 200w Solar Panel ...](#)

In the context of solar panels, the watt rating indicates the maximum potential power that the solar panel can produce in full, direct sunlight. A 200 watt solar panel can ...



[What Can You Power With a 200 Watt Solar Panel?](#)

In summary, a 200W solar panel system is capable of powering caravans and small boats, but it is recommended that you carry storage batteries or a small generator with ...



[How many watts can a 200w solar panel reach? , NenPower](#)

The maximum power output of a solar panel is generally measured in watts, which signifies how much solar energy the panel can convert into usable electricity. For a 200W solar ...



[What Can a 200 Watt Solar Panel Run? , Renogy US](#)

In most cases, a 200 watt solar panel comes in two 100-watt panels. Technically, it produces around 1 kilowatt (kW) of power per hour. So, if ...



[What Can a 200 Watt Solar Panel Run? , Renogy US](#)

In most cases, a 200 watt solar panel comes in two 100-watt panels. Technically, it produces around 1 kilowatt (kW) of power per hour. So, if you live in an area that receives six to eight ...



[How many watts can a 200w solar panel reach?](#)

The maximum power output of a solar panel is generally measured in watts, which signifies how much solar energy the panel can ...



[What Can A 200 Watt Solar Panel Power? A Complete Guide](#)

In general, the short-circuit current of a 12V-200W solar panel is usually between 9.5 and 11 Amps, depending on the panel. The short-circuit current rating of a 24V-200W solar ...



[200W 24V Solar Panel Guide 2025: Best Models & Installation](#)

A 200W 24V solar panel typically produces 5.3-5.5 amps at maximum power point (I_{mp}). Under ideal conditions, short circuit current (I_{sc}) can reach 5.8-6.0 amps.

[Powered By The Sun: How Much Can A 200-Watt Solar Panel Run?](#)

While 200 watts is on the lower end of the spectrum of available solar panel wattage, it's not the lowest. It offers double the amount of power as a 100-watt solar panel, for ...





Contact Us

For inquiries, pricing, or partnerships:

<https://sccd-sk.eu>

Phone: +32 2 808 71 94

Email: info@sccd-sk.eu

Scan QR code for WhatsApp.

