



200ah battery 300 watts of solar





Overview

To charge a 200Ah lithium battery, you need a solar panel with at least 600 watts of wattage. This calculation is based on 4 sunlight hours per day. You will require 2,400 watt-hours ($2,400\text{Wh} \div 4 \text{ hours} = 600\text{W}$). Keep in mind that panel efficiency may vary, which can affect your.

To charge a 200Ah lithium battery, you need a solar panel with at least 600 watts of wattage. This calculation is based on 4 sunlight hours per day. You will require 2,400 watt-hours ($2,400\text{Wh} \div 4 \text{ hours} = 600\text{W}$). Keep in mind that panel efficiency may vary, which can affect your.

To charge a 200Ah lithium battery, you need a solar panel with at least 600 watts of wattage. This calculation is based on 4 sunlight hours per day. You will require 2,400 watt-hours ($2,400\text{Wh} \div 4 \text{ hours} = 600\text{W}$). Keep in mind that panel efficiency may vary, which can affect your charging capacity.

One common question that arises is how many 300-watt solar panels are needed to charge a 200mAh 24V battery. Let's dive into the details and find out. Solar panels play a crucial role in charging batteries by converting sunlight into electrical energy. The number of solar panels required depends on.

A 300-watt solar panel can charge a 200Ah battery in approximately 6 to 12 hours of direct sunlight, depending on factors such as sunlight intensity, battery state of charge, and panel orientation. Under optimal conditions, the charging time can be significantly reduced, allowing for efficient.

Understanding Battery Capacity: A 200Ah battery can supply 200 amps for one hour or 100 amps for two hours; it's essential to calculate how this capacity affects your energy needs. Solar Panel Wattage Calculation: To charge a 200Ah battery, determine the daily amp-hour needs, convert to watt-hours.

Determining the right size of a solar panel to charge a 200Ah battery can feel overwhelming, especially if you're navigating the world of solar power for the first time. What Size Solar Panel to Charge a 200Ah Battery Calculator exists to simplify the process, enabling you to match your energy.

A 300W solar panel can take approximately 6 to 8 hours to fully charge a 200Ah



battery under optimal sunlight conditions. This estimate assumes an average solar efficiency of around 75% and that the battery is deeply discharged. Actual charging times may vary based on factors like sunlight.



200ah battery 300 watts of solar



How Fast Will a 300 Watt Solar Panel Charge a 200Ah Battery?

Understanding how quickly a 300-watt solar panel can charge a 200Ah battery is essential for optimizing solar power systems. This article will explore the charging process, ...

[How Much Solar Power To Charge A 200Ah Lithium Battery: ...](#)

Assuming optimal sunlight, a solar panel rated at 300 watts typically produces around 1,500 to 2,000 watt-hours daily. Therefore, to fully charge your 200Ah lithium battery in ...



How Much Watt Solar Panel Required to Charge 200Ah Battery: ...

Discover the essential insights on how much wattage solar panels are needed to charge a 200Ah battery efficiently. This article breaks down the calculations and factors ...



[How Long Will a 300W Solar Panel Take to Charge a 200Ah ...](#)

This article provides a detailed breakdown of how long it takes for a 300W solar panel to charge a 200Ah battery, considering various factors that



can influence the charging ...



[What Size Solar Panel to Charge a 200Ah Battery Calculator](#)

Determining the right size of a solar panel to charge a 200Ah battery can feel overwhelming, especially if you're navigating the world of solar power for the first time. What ...

[How Many Solar Panels Are Needed to Charge a 200Ah Battery?](#)

Charging a 200Ah battery reliably requires calculating the right number of panels based on battery voltage and wattage. Location affects how many panels you'll ...



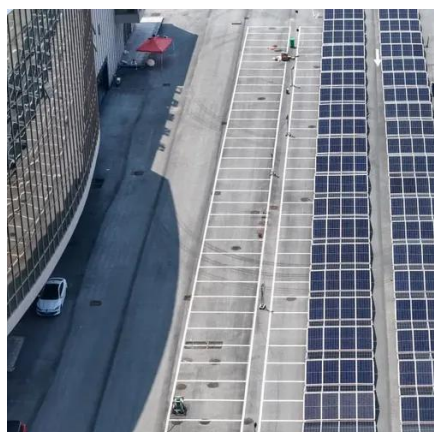
How many 300 watts solar panels do i need to charge a 200mah 24v battery

According to the calculation, you would require three 300-watt solar panels to fully recharge your 200Ah 24V battery on an average day. This configuration takes into account ...



WindyNation 300 Watt Monocrystalline Solar Panel Kit + 200ah ...

The WindyNation 100 Watt Monocrystalline Solar Panel is manufactured with Grade A Solar cells, a heavy-duty anodized aluminum frame, and arrives ready for connection with ...

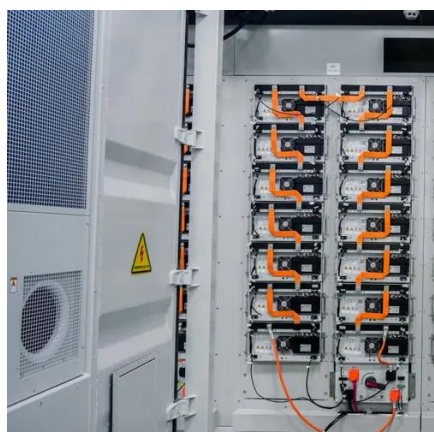


How Much Solar to Charge 200Ah Battery: Essential Tips for ...

Discover how to effectively charge a 200Ah battery with solar power! This comprehensive article guides you through calculating the required solar panel output, ...

How Long Will a 300W Solar Panel Take to Charge a 200Ah Battery?

This article provides a detailed breakdown of how long it takes for a 300W solar panel to charge a 200Ah battery, considering various factors that can influence the charging ...



[How many 300 watts solar panels do i need to ...](#)

According to the calculation, you would require three 300-watt solar panels to fully recharge your 200Ah 24V battery on an average day. ...



How Long Does It Take to Charge a 200ah Battery?

Two 300 watt solar panels will charge a 200ah battery in five hours. If it is a lead acid battery discharged at 50%, charge time will take 2 to 3 hours. How Many Solar Panels Does It Take to ...





Contact Us

For inquiries, pricing, or partnerships:

<https://sccd-sk.eu>

Phone: +32 2 808 71 94

Email: info@sccd-sk.eu

Scan QR code for WhatsApp.

