



# 40-foot Lome mobile energy storage container for tunnels





## 40-foot Lome mobile energy storage container for tunnels

---

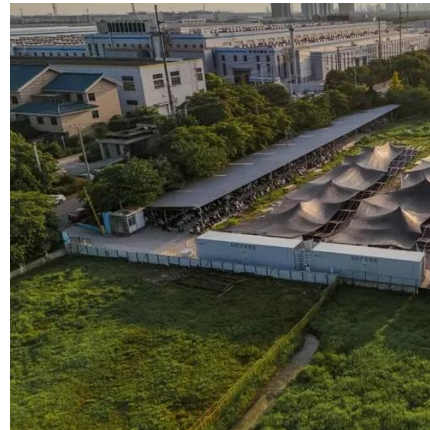


### How can I fix this error: provider: Named Pipes Provider, error: 40

Check that the instance name is correct and that SQL Server allows remote connections. (provider: Named Pipes Provider, error: 40 - Connection to SQL Server could not ...

### SSL FATAL ERROR

After surfing the internet for a long time, I came to know that the support for DSA encryption is disabled permanently by the latest browsers which caused the handshake failure ...



### [Must '@' and '%40' be treated equivalently in URL paths?](#)

Must '@' and '%40' be treated equivalently in URL paths? Asked 9 years, 8 months ago Modified 9 years, 8 months ago Viewed 1k times

### [Error 40: Could not open a connection to SQL Server](#)

Named pipes Error 40 Could not open a connection to SQL server. I tried several MSDN pages and links, which includes firewall setting



change, SQL configuration settings, but nothing works.



### [How do I fix the error 'Named Pipes Provider, error 40](#)

Named Pipes Provider, error: 40 - Could not open a connection to SQL Server I tried using the local IP address to connect as well as a public one. I've tried: Yes, the site can ...

### **curl**

Found your question while searching for the exact same problem (curl succeeds to connect while openssl fails with alert number 40). It might be related to a server with several ...



### **encoding**

%40 converted into @ on Get Asked 12 years, 6 months ago Modified 7 years, 5 months ago Viewed 14k times



## java

i m trying to send post request to webservice..  
when i add special character @ in parameter it is  
coverted to %40.i have checked server side..they  
are getting %40 instead of @. ...

- ✓ LIQUID/AIR COOLING
- ✓ INTELLIGENT INTEGRATION
- ✓ PROTECTION IP54/IP55
- ✓ BATTERY /6000 CYCLES



## Strawberry Perl 5.40(.2)

What I eventually did was to regress to Strawberry  
Perl 5.32, then do a "cpamn install DBD::Mariadb"  
and that worked as expected, so I am up and  
running. Ultimately I would ...

## Named Pipes Provider, error: 40

Named Pipes Provider, error: 40 - Could not open a  
connection to SQL Server? Asked 15 years, 6  
months ago Modified 10 years, 2 months ago  
Viewed 30k times

## ESS





## Contact Us

---

For inquiries, pricing, or partnerships:

<https://sccd-sk.eu>

Phone: +32 2 808 71 94

Email: [info@sccd-sk.eu](mailto:info@sccd-sk.eu)

Scan QR code for WhatsApp.

