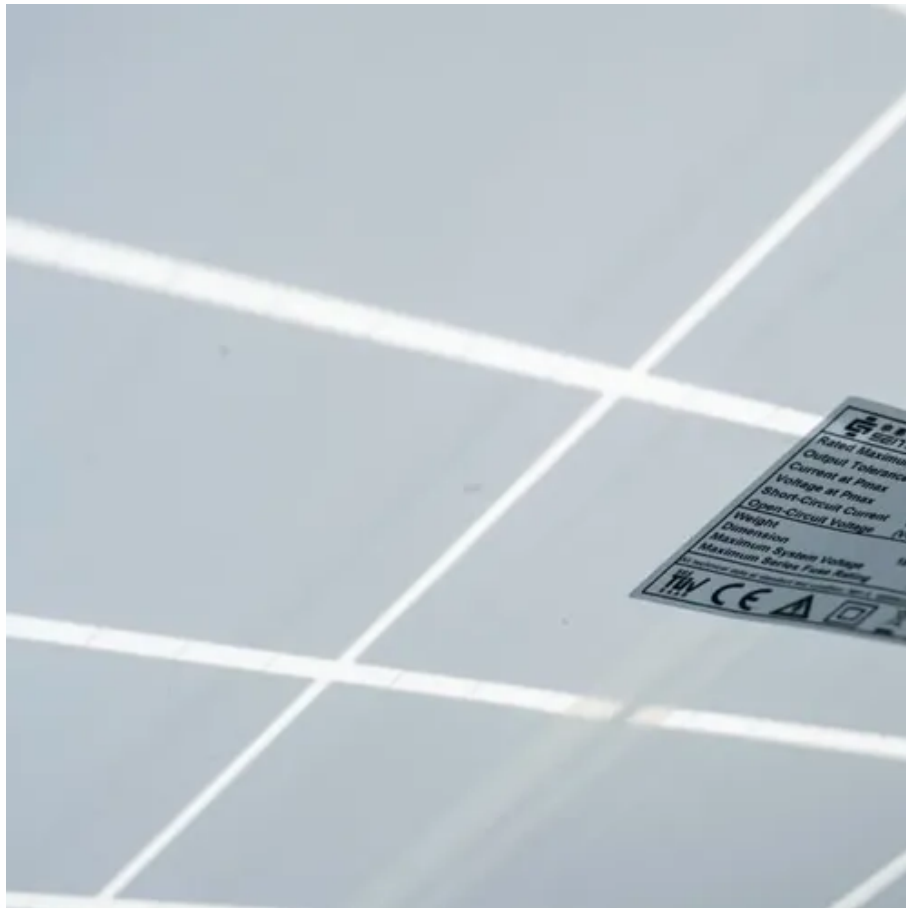




48v60ah solar container lithium battery connected to inverter 3000 watts





48v60ah solar container lithium battery connected to inverter 3000 w

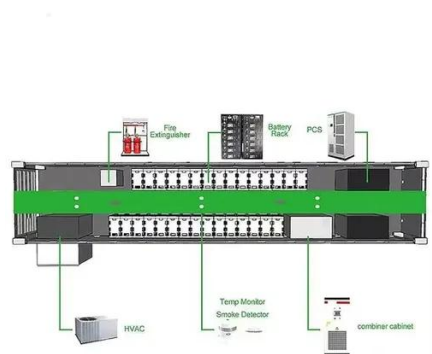


[What size battery do I need to run a 3000W inverter?](#)

A 3000W inverter typically requires a 12V 600Ah, 24V 300Ah, or 48V 150Ah lithium battery for 1-hour runtime at full load, assuming 90% inverter efficiency and 80% depth of discharge (DoD).

[Victron Energy Quattro 48/3000/35-50/50 . NAZ Solar Electric](#)

Similar to the MultiPlus, the Quattro is also a combined inverter and charger. Additionally, it can accept two AC input and automatically connect to the active source.



Choosing the Right Battery Size for 3000 Watts: A Complete Guide

To find the amp-hours required for a 3000-watt load, you first need to decide on the voltage of your battery system. The most common voltage systems are 12V, 24V, and 48V. ...

[3000W Solar Inverter Guide 2025: Reviews, ...](#)

Complete guide to 3000W solar inverters. Compare top models, learn installation basics, and find the perfect inverter for your off ...



3000 Watt Power Station Wholesale

High-power solar generator for home backup, camping & field work -- built for wholesale, distributors, retailers, and private-label OEM/ODM programs.



[How Many Batteries For a 3000W Inverter](#)

For a 3000 watt inverter at 48 volts: $3000 \text{ watts} / 48 \text{ volts} = 62.5 \text{ amps}$. You would need batteries with a capacity that allows the ...



[48v/60ah lithium battery connected to inverter 3000 watts](#)

How do I run a 3000W inverter? To run a 3000W inverter, you'll need a lithium battery bank sized to match your energy demands and runtime. For continuous 3000W output, calculate total watt ...





How Many Batteries for a 3000W Inverter? Complete Guide

In this article, we'll break down the exact battery requirements for a 3000W inverter, compare lithium vs lead-acid options, and guide you step by step with real calculations.



What Are the Best Lithium Batteries for 3000-Watt Power Inverters?

Lithium iron phosphate (LiFePO₄) batteries are the optimal choice for 3000-watt inverters due to their superior thermal stability, long cycle life (often exceeding 2000 cycles), high discharge ...

How Many Batteries For a 3000W Inverter

For a 3000 watt inverter at 48 volts: $3000 \text{ watts} / 48 \text{ volts} = 62.5 \text{ amps}$. You would need batteries with a capacity that allows the inverter to draw 62.5 amps safely.



[Victron Energy Quattro 48/3000/35-50/50 . NAZ ...](#)

Similar to the MultiPlus, the Quattro is also a combined inverter and charger. Additionally, it can accept two AC input and automatically connect to the ...



48v60ah lithium battery connected to inverter 3000 watts

For a 3000 watt inverter at 24 volts: $3000 \text{ watts} / 24 \text{ volts} = 125 \text{ amps}$. You would need batteries with a capacity that allows the inverter to draw 125 amps safely.



3000W Solar Inverter Guide 2025: Reviews, Installation & Sizing

Complete guide to 3000W solar inverters. Compare top models, learn installation basics, and find the perfect inverter for your off-grid system. Expert tested reviews included.



Contact Us

For inquiries, pricing, or partnerships:

<https://sccd-sk.eu>

Phone: +32 2 808 71 94

Email: info@sccd-sk.eu

Scan QR code for WhatsApp.

