



580 Model solar Panel Dimensions





Overview

JA Solar's 580-605W solar panel features a mechanical diagram, specifications, and key details such as dimensions (2465+2mm x 1134+2mm x 35mm), weight (31.1kg, 3%), cable cross-section size (4mm or IEC 12 AWG UL), 156 mono cells with 6x26 configuration, grounding holes .

JA Solar's 580-605W solar panel features a mechanical diagram, specifications, and key details such as dimensions (2465+2mm x 1134+2mm x 35mm), weight (31.1kg, 3%), cable cross-section size (4mm or IEC 12 AWG UL), 156 mono cells with 6x26 configuration, grounding holes .

Discover the JA Solar N-type 580W Bifacial Solar Panel JAM72D40-580/MB, a high-performance and efficient solar panel that captures sunlight from both sides, maximizing energy generation. JA Solar reserves the right to make changes to the product, specifications or installation manual without.

Introducing the MSM580-600S-D66/Wmh by Macsun Solar, a solar module [.] The HS-210-B110DS560-580 solar module by HUASUN ENERGY is designed to [.] Introducing the BR-M580-600W solar panel by BR Solar, an innovative [.] The LP182-M-78-MB 580-595W by Lepton Solar is a high-performance [.].

available in the installation instruction. All values indicated in this data sheet are subject to change without prior announcement. The specifications may vary slightly . All specification are in accordance with standard EN 50380. Color differences of the modules relative to the figures as well as.

The SolarSpace SS8-72HD-580N is a high-output, bifacial solar module featuring advanced N-Type cell technology and dual-glass construction. Delivering up to 580W from the front side and up to 30% additional power from the rear, it is designed for utility-scale and commercial PV projects requiring.

Introducing our latest 580W solar panel, a powerhouse of energy generation with superior output capabilities. Engineered for optimal performance, it excels in power generation under shadows, offers robust anti-hot spot ability, and boasts a strong mechanical load capacity for durability in.

The JA Solar 580-605W Mono MBB Half-cell Module (JAM78S30 Series) is designed



with advanced 11BB PERC cells and a half-cell configuration, offering significant advantages such as higher power output, improved temperature-dependent performance, reduced shading effects, lower risk of hot spots, and.



580 Model solar Panel Dimensions

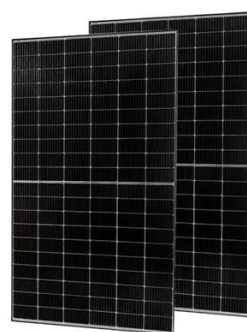


[580 W , LONGI-PANEL-580W-LR5-72HTD-580M](#)

It features 144 half-cut cells and utilizes Hybrid Passivated Back Contact (HPBC) technology, improving light absorption and reducing energy loss. Key Features: Max Power Output: 580 W ...

SOLAR PANEL

With a super strong frame design accounting for 10% increased strength and a system voltage of 1500V, this solar panel ensures stability, reliability, and efficiency for long ...



[580 Watt Solar panels for sale , Prices, ...](#)

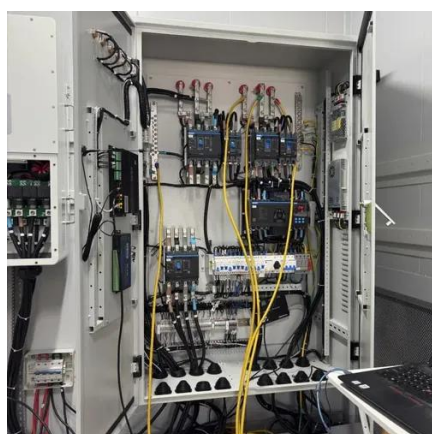
Region: China Features: High efficiency (high output) / High Power (High wattage) / Low PID / Monocrystalline / Multi-bus bar / Severe Weather ...

[JA Solar 580 Watt Solar Panel \(580-605W\) - TSolar](#)

JA Solar's 580-605W solar panel features a mechanical diagram, specifications, and key details such as dimensions (2465+2mm x ...



FLEXIBLE SETTING OF MULTIPLE WORKING MODES



POWER OUTPUT MAX EFFICIENCY 560-580W 22.5%

Section A-A (80 ± 5)% Packaging box dimensions (mm) : 2310×1120×1255 Section B-B Packaging box weight (kg) : 1202 36 Pieces per pallet 720 Pieces per container / 40' HC For ...

JA Solar 580 Watt Solar Panel (580-605W) - TSolar

JA Solar's 580-605W solar panel features a mechanical diagram, specifications, and key details such as dimensions (2465+2mm x 1134+2mm x 35mm), weight (31.1kg, 3%), cable cross ...



580W photovoltaic panel specifications

Discover the JA Solar N-type 580W Bifacial Solar Panel JAM72D40-580/MB, a high-performance and efficient solar panel that captures sunlight from both sides, maximizing energy generation.



[SolarSpace 580W N-Type Bifacial Solar Panel ...](#)

SolarSpace, founded in 2010 in China, is a Tier-1 solar cell and module manufacturer with around 60 GW cell and 10 GW module capacity. They ...



AE_ME-120BS_580W-600W_Ver24.5.1

The specifications and characteristics contained in this datasheet may deviate slightly from our actual products due to the product developments and uncertainty of measurement devices. ...

[SolarSpace 580W Solar Panel 144 Cell Bifacial SS8-72HD-580N](#)

SolarSpace SS8-72HD-580N is a PV module fit for both residential and commercial applications. SolarSpace engineers made the SS8-72HD-N series durable and ...



[SolarSpace 580W N-Type Bifacial Solar Panel SS8-72HD-580](#)

SolarSpace, founded in 2010 in China, is a Tier-1 solar cell and module manufacturer with around 60 GW cell and 10 GW module capacity. They offer high-efficiency PERC and N-Type ...



580 Watt Solar panels for sale , Prices, dimensions, weight, ...

Region: China Features: High efficiency (high output) / High Power (High wattage) / Low PID / Monocrystalline / Multi-bus bar / Severe Weather Resistant Panel Dimension: 2172x1303x35 ...



Jinko 580w Solar Panel

The Jinko 580w panel is a prime example of this quality, with a dimensions of 2278×1134×35mm 2278×1134×35mm (89.69×44.65×1.38 inch) and an efficiency rate of up to 22.45%. This panel ...



Contact Us

For inquiries, pricing, or partnerships:

<https://sccd-sk.eu>

Phone: +32 2 808 71 94

Email: info@sccd-sk.eu

Scan QR code for WhatsApp.

