



610W solar panel specifications





Overview

High 610W power output allows fewer panels per project. HPBC technology minimizes energy loss and boosts conversion efficiency up to 23%. Monocrystalline cells ensure long lifespan and stable generation. Half-Cell design enhances resistance to partial shading.

High 610W power output allows fewer panels per project. HPBC technology minimizes energy loss and boosts conversion efficiency up to 23%. Monocrystalline cells ensure long lifespan and stable generation. Half-Cell design enhances resistance to partial shading.

Introducing the HTM585~610MH8-60 by Haitai Solar, a game-changing [.]
Introducing the STM-580-610/120-S4 solar module by Schutten Solar, a [.]
Introducing the HTM585~610MH8-60 by Haitai Solar, a game-changing [.] The LP210-M-60-MH 590-610W, manufactured by Lepton Solar, is an [.] The EVO6.

Bluesun 610W Bifacial Half Cell Solar Panel, featuring the latest TOPCon N-Type technology. Designed for business applications, this panel offers an impressive efficiency of up to 23.2% and is built to withstand harsh environmental conditions, ensuring reliable performance.

Explore our full range of solar products built to power every project. The LONGi 610W N-Type TOPCon Bifacial Solar Panel (LR7-72HGD-610M) combines cutting-edge efficiency and durability, offering exceptional energy output for residential and commercial applications. Its bifacial technology.

The LONGi LR7-72HTH-610M solar panel is a high-performance monocrystalline module from LONGi's Hi-MO 7 series, designed for both residential and commercial applications. With a peak power output of 610W and bifacial cell technology, this panel achieves an impressive efficiency of 22.6%, allowing.

LUXEN PERC: Standard warranty 12 years, can be extended up to 15 years. LUXEN SOLAR ENERGY CO., LTD. Note: The specifica ons, data and technical characteris cs provided in this data sheet are subject to changes due to con nuous R&D, product innova on and improvement. LUXEN SOLAR reserves the right.

The JA 610 Watt N Type Bi-Facial Solar Panel is a high-performance,



monocrystalline silicon solar module designed for maximum energy output. Featuring bi-facial technology, this panel captures solar energy from both its front and rear sides, increasing efficiency and overall energy generation. With.



610W solar panel specifications



610W Dual Glass Shingled Solar Panel - Powerful & Efficient

At the heart of the 610W panel is advanced MBB (Multi-Busbar) half-cell shingled technology, which maximizes the effective area of the module and minimizes resistive loss. The result? An ...

610 W , LONGI-PANEL-610W-LR7-72HGD-610M

With a peak power output of 610W and bifacial cell technology, this panel achieves an impressive efficiency of 22.6%, allowing for high energy ...

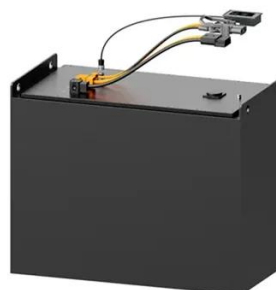


Trina Solar , Vertex TSM-DE20 590-610W , Solar ...

Detailed profile including pictures, certification details and manufacturer PDF.

Canadian TOPCON N-Type Bifacial 610watt Solar ...

Key Specifications Maximum Power Output (Pmax): 610W Module Efficiency: Up to 22.8% Cell Configuration: 132 half-cut N-type TOPCon ...

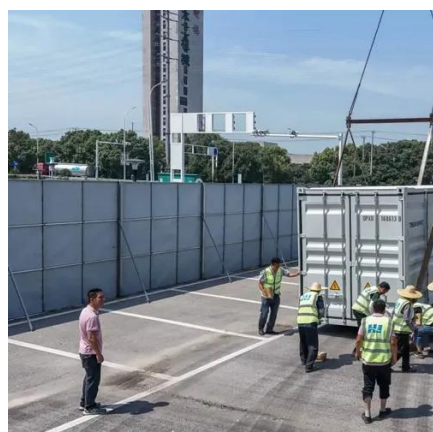


[Solar panel 610W LONGI Solar Hi-MO X6 Max Explorer LR7 ...](#)

610W LONGI Hi-MO X6 Max Explorer panel (model LR7-72HTH-610M) featuring HPBC technology, 22.6% efficiency, and 144 monocrystalline cells. Ideal for commercial PV systems.

[610W Dual Glass Shingled Solar Panel - Powerful ...](#)

At the heart of the 610W panel is advanced MBB (Multi-Busbar) half-cell shingled technology, which maximizes the effective area of the module ...



[Trina Solar , Vertex TSM-DE20 590-610W , Solar Panel ...](#)

Detailed profile including pictures, certification details and manufacturer PDF.



Canadian TOPCON N-Type Bifacial 610watt Solar Panel

Key Specifications Maximum Power Output (Pmax): 610W Module Efficiency: Up to 22.8% Cell Configuration: 132 half-cut N-type TOPCon monocrystalline cells Open Circuit Voltage (Voc): ...



LUXEN SERIES 6 210 MONOFACIAL 120cells 590-610w ...

LUXEN PERC: Standard warranty 12 years, can be extended up to 15 years. LUXEN SOLAR ENERGY CO., LTD. Note: The specifications, data and technical characteristics provided in this ...



LONGi - 610W N-Type TOPCon Bifacial Solar ...

The LONGi 610W N-Type TOPCon Bifacial Solar Panel ...



610 Watt Solar panels for sale , Prices, dimensions, weight, ...

610 Watt Solar panels' range of prices, dimensions, sizes, voltage output, specifications datasheets Ranges of information Voltage: 5.6V ~ 46.07V Amp: 13.25A ~ 17.58A



TOPCon N Type 610W Bifacial Solar Panel

Bluesun 610W Bifacial Half Cell Solar Panel, featuring the latest TOPCon N-Type technology. Designed for business applications, this panel offers an impressive efficiency of up to 23.2% ...

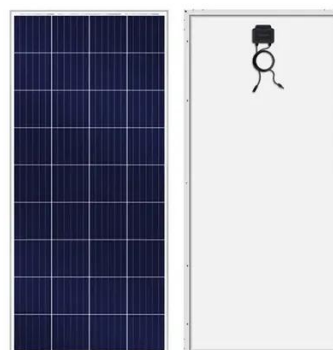


LONGi - 610W N-Type TOPCon Bifacial Solar Panel (LR7 ...

The LONGi 610W N-Type TOPCon Bifacial Solar Panel (LR7-72HGD-610M) combines cutting-edge efficiency and durability, offering exceptional energy output for residential and ...

610 W , LONGI-PANEL-610W-LR7-72HGD-610M , NCA SOLAR

With a peak power output of 610W and bifacial cell technology, this panel achieves an impressive efficiency of 22.6%, allowing for high energy yields even in challenging conditions.



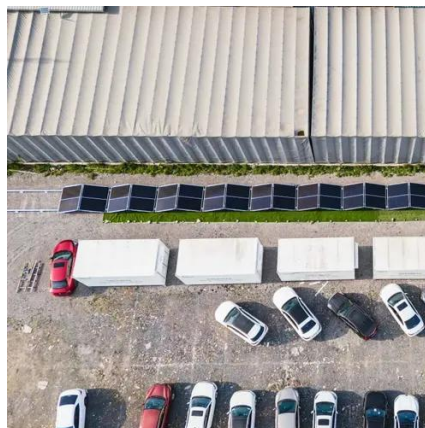
610 Watt Solar panels for sale , Prices, ...

610 Watt Solar panels' range of prices, dimensions, sizes, voltage output, specifications datasheets Ranges of information Voltage: 5.6V ~ 46.07V ...



JA 605-610W Bifacial Panels

With a power output of up to 600W and an advanced N-Type cell structure, this panel ensures optimal performance in a variety of conditions, ...



12.8V 200Ah

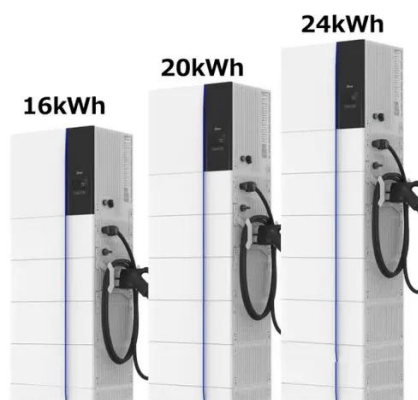


JA 605-610W Bifacial Panels

With a power output of up to 600W and an advanced N-Type cell structure, this panel ensures optimal performance in a variety of conditions, including low-light and shaded environments.

TOPCon N Type 610W Bifacial Solar Panel

Bluesun 610W Bifacial Half Cell Solar Panel, featuring the latest TOPCon N-Type technology. Designed for business applications, this panel offers an impressive efficiency of up ...





Contact Us

For inquiries, pricing, or partnerships:

<https://sccd-sk.eu>

Phone: +32 2 808 71 94

Email: info@sccd-sk.eu

Scan QR code for WhatsApp.

