



# 90w monocrystalline solar panel specifications





## Overview

---

This 90-watt panel has an 18.2 percent efficiency rating. Simple and rugged: Equipped with heavy-duty aluminum frames for strong weather resistance and permanent mounting. They're simple to install, equipped with easy to use plug-and-play connectors.

This 90-watt panel has an 18.2 percent efficiency rating. Simple and rugged: Equipped with heavy-duty aluminum frames for strong weather resistance and permanent mounting. They're simple to install, equipped with easy to use plug-and-play connectors.

Panels supported by best ballistic materials. Compact folding size Easy to stow and use Multiple embedded bypass diodes Ruggedized construction for all environments. Impact, vibration, and water resistant. Perfect for mobilized power.

d durable for numerous off-grid solar applications. Available in a wide range of wattage options, these panels are sure to compliment any solar deployment intended for general informational purposes only. Responsibility for the use and application of AccelTex Solutions materials rests with the end user. All.

Low voltage-temperature coefficient enhances high-temperature operation. Exceptional low-light performance and high sensitivity to light across the entire solar spectrum. 25-Year limited warranty on power output and performance. 5-Year limited warranty on materials and workmanship. Sealed.

High Efficiency Solar Cells Up to 5.12 Amp, Continuously recharge your 12V batteries with the power of the sun.

This CID2-rated solar panel is suitable for industries that are at risk of gas explosions, meeting NFPA and NEC safety standards Equipped with specialized design elements, minimizing risk of ignition in hazardous environments, further adhering to CID2 certification standards Engineered for.

The AccelTex Solutions Solar Panels are highly efficient and durable for numerous off-grid solar applications. Available in a wide range of wattage options, these panels are sure to compliment any solar deployment. Each panel ships with a wall/pole mount. View, Download or Print detailed product.



## 90w monocrystalline solar panel specifications

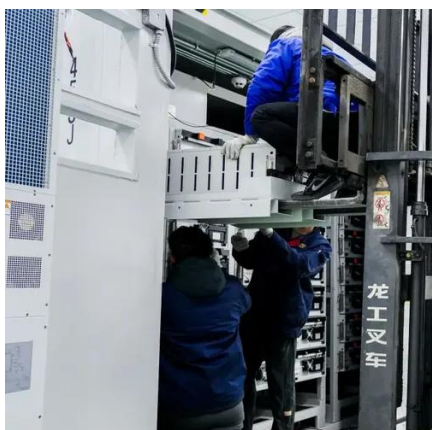
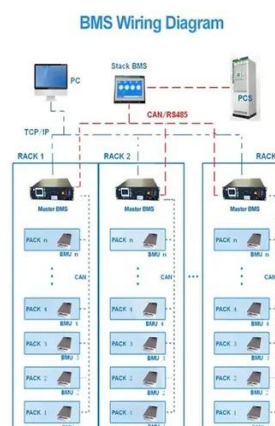


### 90 W MONOCRYSTALLINE SOLAR PANEL WITH ...

Dimensions: 47.24" L x 21.65" H x 1.37" D (1,200 mm L x 550 mm H x 35 mm D) Weight: 18.74 lb (8.5 Kg) Installation: Wall/Pole Mount Pole Mount Diameter: Up to 12" Diameter Pole (304.8 ...

### **SBM 90W SOLAR PANEL SPECIFICATIONS**

Impact, vibration, and water resistant. Perfect for mobilized power.

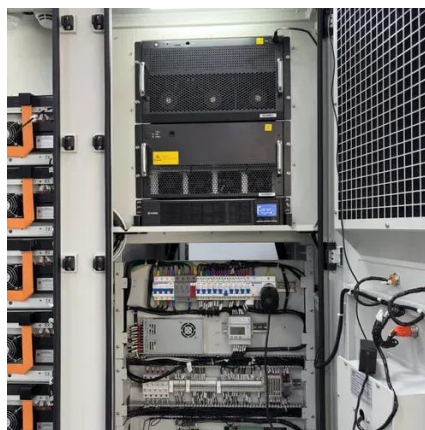


### NATURE POWER 90W Rigid Monocrystalline Solar Panel

Efficient technology: These panels use the most efficient monocrystalline solar technology on the market today. This 90-watt panel has an 18.2 percent efficiency rating. Simple and rugged: ...

### NATURE POWER 90W Rigid Monocrystalline ...

Efficient technology: These panels use the most efficient monocrystalline solar technology on the market today. This 90-watt panel has an 18.2 ...



### [90 Watt Monocrystalline Solar Panel With Mounting Kit](#)

Available in a wide range of wattage options, these panels are sure to compliment any solar deployment. Each panel ships with a wall/pole mount. View, Download or Print detailed ...



### **Solarland® SLP090-24U 90 Watt 24V Mono-Crystalline Solar Panel**

The SLP090-24U 90 watt, 24 volt poly-crystalline solar panel from Solarland® is a standard-use module featuring exceptional low-light performance in a rugged frame.



### [Monocrystalline Solar Panel 90W PMS90W Datasheet](#)

Monocrystalline Solar Panel 90W PMS90W Datasheet. High module conv cy (up to 18.66%), through innovative manufacturing technology. cy. Impedance matching technology eliminates ...







## BlueSolar Monocrystalline Panels

Exceptional low-light performance and high sensitivity to light across the entire solar spectrum. 25-Year limited warranty on power output and performance. 5-Year limited warranty on ...



## 90W MONOCRYSTALLINE SOLAR PANEL

Features Aluminum Frame, Rugged Design High Efficiency Solar Cells Up to 5.12 Amp, Continuously recharge your 12V batteries with the power of the sun. Includes battery ...



## [Nature Power 90W Monocrystalline Solar Panel](#)

These solar panels are high efficiency 12-Volt solar panels featuring sturdy aluminum frames and high transparency tempered glass tops. The anti ...



## [Nature Power 90W Monocrystalline Solar Panel](#)

These solar panels are high efficiency 12-Volt solar panels featuring sturdy aluminum frames and high transparency tempered glass tops. The anti-reflective and scratch-resistant coating help ...





### Solarland® SLP090-24U 90 Watt 24V Mono ...

The SLP090-24U 90 watt, 24 volt poly-crystalline solar panel from ...



### CID2 90W 24V Monocrystalline Solar Panel , SLD ...

This CID2-certified 90W 24V Monocrystalline solar panel is engineered for industrial and remote power systems.

### CID2 90W 24V Monocrystalline Solar Panel , SLD Tech

This CID2-certified 90W 24V Monocrystalline solar panel is engineered for industrial and remote power systems.





## Contact Us

---

For inquiries, pricing, or partnerships:

<https://sccd-sk.eu>

Phone: +32 2 808 71 94

Email: [info@sccd-sk.eu](mailto:info@sccd-sk.eu)

Scan QR code for WhatsApp.

