



A16 Weight of battery cabinet





Overview

Our powder-coated cabinets are non-movable and easy to construct in any clean environment. APPLICATION Uninterruptable Power Supplies, Inverters, DC Banks, Solar Systems FEATURES What's in the Box Packaged Dimensions: 1190x500x125 (A) /840x500x260 (B) (W-D-H)mm 11Kg (A)/31Kg (B).

Our powder-coated cabinets are non-movable and easy to construct in any clean environment. APPLICATION Uninterruptable Power Supplies, Inverters, DC Banks, Solar Systems FEATURES What's in the Box Packaged Dimensions: 1190x500x125 (A) /840x500x260 (B) (W-D-H)mm 11Kg (A)/31Kg (B).

Note: Don't reverse battery polarities or battery will be damaged.

Battery cabinet that includes Lithium-ion batteries, Battery Management System (BMS), switchgear, power supply, and communication interface. Battery cabinet that includes Lithium-ion batteries, Battery Management System (BMS), switchgear, power supply, and communication interface. Schneider.

- Durable metal construction • Available in tower or rackmount configuration • Suitable for 7-9Ah batteries BBRT-20-9 (Available in tower or rackmount configuration) BBRT-8-9/EBXL+ EBM1-2/3-6/10 (Available in tower or rackmount configuration) 882 447 Power Systems.

APC Trade-UPS is a 1-phase UPS program that offers new and existing customers the ability to trade in older battery backup units for the most up-to-date 1-phase power protection models at discounted prices. Select UPS (s) for your purchase. Continue to add units until you meet your minimum.

NOTE: The battery cabinets are shipped without batteries. The battery modules are shipped separately per the chosen configuration with 10, 13, 16, or 17 battery modules. Was this helpful?

A compact, lightweight, long-lasting, and sophisticated energy storage solution for 3-phase uninterruptible power supplies. The Schneider Electric Lithium-ion battery solution for 3-phase UPSs is a high-value, innovative energy storage protection



solution for data centers, industrial processes, and.



A16 Weight of battery cabinet



A16 Integrated Battery Cabinet

The CPSY factory cover an area of 10000 square meter and 5 assembly lines, with over 200 employees and strong R & D team who with 25 years UPS experience.

[APC LIBSESMG16UL Galaxy Lithium-Ion Battery Cabinet UL ...](#)

The Lithium-ion battery solution significantly reduces battery footprint and weight to allow more effective use of space. It also doubles battery life and simplifies maintenance compared to ...



LIBSESMG16UL

Battery cabinet that includes Lithium-ion batteries, Battery Management System (BMS), switchgear, power supply, and communication interface.

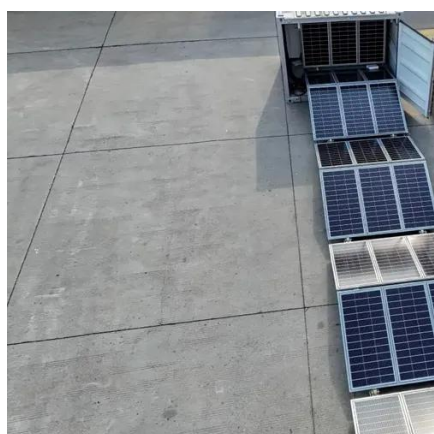
LIBSESMG16UL

Battery cabinet that includes Lithium-ion batteries, Battery Management ...



A16 Battery Cabinet

Cabinet dimension of A16:
780mm×470mm×1230mm (D×W×H), including connecting wires, air switch and wire holder. The cabinet can be mounted up to 16 pieces 65AH/12V battery or ...



Galaxy Lithium-ion Battery Cabinet IEC with 16 x 2.04 kWh battery

Reduces weight by over two-thirds, providing flexibility to install the battery solution on any floor while minimizing structural modification requirements.



Galaxy Lithium-ion Battery Cabinet IEC with 16 x ...

Reduces weight by over two-thirds, providing flexibility to install the battery solution on any floor while minimizing structural modification requirements.





[ensmartpower-battery-cabinet-bep-a10-series](#)

Note: Don't reverse battery polarities or battery will be damaged.



Battery Cabinet A16

Popular in the UPS and inverter industry, these cabinets can house up to 40 x 12V100Ah batteries. Our powder-coated cabinets are non-movable and easy to construct in any clean ...

A16 Integrated Battery Cabinet

The CPSY factory cover an area of 10000 square meter and 5 assembly lines, with over 200 employees and strong R & D team who ...



Shipping Weights and Dimensions

NOTE: The battery cabinets are shipped without batteries. The battery modules are shipped separately per the chosen configuration with 10, 13, 16, or 17 battery modules.



Battery cabinet -2024

Power Systems Solutions B Series Features Model
Dimensions (HxWxD) Weight Battery Loading
Specifications (Available in tower or rackmount
configuration) PMU-BC2



[C16 A16 Size Solar UPS Battery Cabinet](#)

Product Name: C16 A16 size solar UPS battery cabinet battery box for 16pcs 12v 100ah Selling
Units: Single item Single package size: 80X37X46
cm Single gross weight: 40.000 kg Show more



Contact Us

For inquiries, pricing, or partnerships:

<https://sccd-sk.eu>

Phone: +32 2 808 71 94

Email: info@sccd-sk.eu

Scan QR code for WhatsApp.

