



Advantages and disadvantages of wireless base station communication





Overview

In the area of wireless computer networking, a base station is a radio receiver/transmitter that serves as the hub of the local wireless network, and may also be the gateway between a wired network and the wireless network. It typically consists of a low-power transmitter and .

Explore the pros and cons of cellular networks, including mobility, connectivity, data rates, security, and infrastructure costs.

Explore the pros and cons of cellular networks, including mobility, connectivity, data rates, security, and infrastructure costs.

The present-day tele-space is incomplete without the base stations as these constitute an important part of the modern-day scheme of wireless communications. They are referred to as cell towers or cellular antennas. These types of objects are an inevitability since they serve the purpose of.

In radio communications, a base station is a wireless communications station installed at a fixed location and used to communicate as part of one of the following: a wireless telephone system such as cellular CDMA or GSM cell site. Base stations use RF power amplifiers (radio-frequency power).

A base station is an integral component of wireless communication networks, serving as a central point that manages the transmission and reception of signals between cellular networks and mobile devices. It ensures that users can access voice and data services effectively. Now that we have a solid.

This article explores the advantages and disadvantages of cellular networks, covering their basics and providing a balanced view of their capabilities and limitations. What is a Cellular Network?

Introduction: Modern wireless networks like GSM, CDMA, and LTE are known as cellular networks. These.

Base stations are critical components in wireless communication networks, serving as the intermediary between mobile devices and the core network. They play a vital role in ensuring seamless connectivity, efficient data transmission, and reliable communication services. This blog explores the.



Base Station But what exactly is a base station, and how does it work in wireless communication networks?

This article explores the concept of base stations, their functions, and their significance in the telecommunications ecosystem. What is a Base Station?

A base station is a fixed communication.



Advantages and disadvantages of wireless base station communication

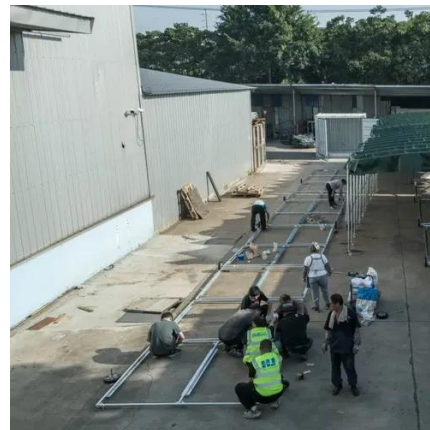


The Base Station in Wireless Communications: ...

Modern society has always seemed somewhat obsessed with technology. However, no device has had such a profound impact on the ...

Cellular Networks: Advantages and Disadvantages ...

This article explores the advantages and disadvantages of cellular networks, covering their basics and providing a balanced view of their capabilities ...



Base station

In the area of wireless computer networking, a base station is a radio receiver/transmitter that serves as the hub of the local wireless network, and may also be the gateway between a wired ...

The Base Station in Wireless Communications: The Key to ...

Modern society has always seemed somewhat obsessed with technology. However, no device has had such a profound impact on the world as the



mobile phone and ...



Understanding Base Stations: The Backbone of Wireless Communication

Base stations are the backbone of modern wireless communication networks. They ensure that mobile devices can connect to the internet, make calls, and send data without ...



What Is the Role of a Base Station in Wireless Communication?

Base stations are critical components in wireless communication networks, serving as the intermediary between mobile devices and the core network. They play a vital role in ...



Military Wireless Communications

Military Wireless Communications The research is driven by the lack of communication capabilities observed by front-line troops, while providing disaster relief, humanitarian ...





Understanding Base Stations: The Backbone of Wireless ...

Base stations are the backbone of modern wireless communication networks. They ensure that mobile devices can connect to the internet, make calls, and send data without ...



What is a Base Station in Telecommunications?

Base stations are the backbone of modern telecommunications networks, providing the essential infrastructure for wireless communication. They enable mobile devices to connect to the ...



Base Stations

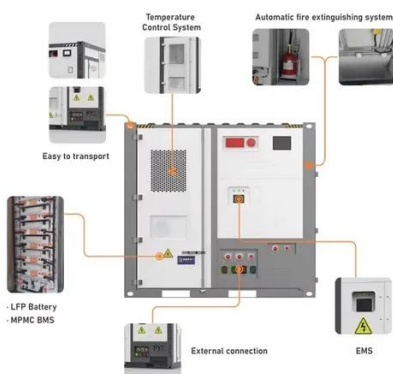
Base stations form a key part of modern wireless communication networks because they offer some crucial advantages, such as wide coverage, continuous communications and ...



Base station

OverviewComputer networkingLand surveyingWireless communicationsSee also

In the area of wireless computer networking, a base station is a radio receiver/transmitter that serves as the hub of the local wireless network, and may also be the gateway between a wired network and the wireless network. It typically consists of a low-power transmitter and wireless router.





What is a Base Station in Telecommunications?

Base stations are the backbone of modern telecommunications networks, providing the essential infrastructure for wireless communication. They ...



Advantages and disadvantages of Wireless Communication

The type of communication which use electromagnetic waves as communication media for transmitting and receiving data or voice is called wireless communication. The ...



What Is A Base Station?

A base station, also known as a cell site or cell tower, is used for wireless communication. It is a fixed location equipped with antennas and other equipment that ...



Cellular Networks: Advantages and Disadvantages

This article explores the advantages and disadvantages of cellular networks, covering their basics and providing a balanced view of their capabilities and limitations.





Contact Us

For inquiries, pricing, or partnerships:

<https://sccd-sk.eu>

Phone: +32 2 808 71 94

Email: info@sccd-sk.eu

Scan QR code for WhatsApp.

