



# Are operator base stations considered national communications facilities





## Overview

---

A structure or equipment at a fixed location that enables Commission -licensed or authorized wireless communications between user equipment and a communications network. The term does not encompass a tower as defined in this subpart or any equipment associated with a tower.

A structure or equipment at a fixed location that enables Commission -licensed or authorized wireless communications between user equipment and a communications network. The term does not encompass a tower as defined in this subpart or any equipment associated with a tower.

Terms used in this section have the following meanings. (1) Base station. A structure or equipment at a fixed location that enables Commission -licensed or authorized wireless communications between user equipment and a communications network. The term does not encompass a tower as defined in this.

rnments in resolving wireless facilities siting issues. In that capacity, the Commission has formed a Wireless Facilities Siting Task Force to serve as a focal point for collection and dissemination of information relating to the efforts of state and local governments, as well as providers of.

Ancillary Terrestrial Component (ATC) base station. A terrestrial fixed facility used to transmit communications to or receive communications from one or more ancillary terrestrial component mobile terminals. Ancillary Terrestrial Component (ATC) mobile terminal. A terrestrial mobile facility used.

A. "Antenna" means any exterior apparatus designed for telephonic, radio, data, Internet or other communications through the sending and/or receiving of radio frequency signals including, but not limited to, equipment attached to a tower, utility pole, building or other structure for the purpose of.

recognizes the benefit of wireless communications facilities in providing high quality communications service and enhancement to its residents, businesses and emergency service providers, the [Township or Borough or City] also recognizes that it has an obligation to protect public safety through.



The Federal Communications Commission (FCC), as an independent agency of the United States government, was established by the Communications Act of 1934. As the successor to the Federal Radio Commission, FCC took charge of regulating all non-federal government use of the radio spectrum (including. What is a base station?

(1) Base station. A structure or equipment at a fixed location that enables Commission -licensed or authorized wireless communications between user equipment and a communications network. The term does not encompass a tower as defined in this subpart or any equipment associated with a tower .

What are commercial mobile services regulated by the FCC?

"Commercial mobile services " are defined in Section 332 of the Communications Act and the FCC's rules, and include cellular telephone services regulated under Part 22 of the FCC's rules, SMR services regulated under Part 90 of the FCC's rules, and PCS regulated under Part 24 of the FCC's rules. 47 C.F.R. §20.9.

What types of equipment are included in a radio system?

(ii) The term includes, but is not limited to, radio transceivers, antennas, coaxial or fiber-optic cable, regular and backup power supplies, and comparable equipment, regardless of technological configuration (including Distributed Antenna Systems and small-cell networks).

Can a zoning authority deny a location based on RF emissions?

Answer: Yes. The Telecommunications Act of 1996 specifically leaves in place the authority that local zoning authorities have over the placement of personal wireless facilities. It does prohibit the denial of facilities siting based on RF emissions if the licensee has complied with the FCC's regulations concerning RF emissions.



## Are operator base stations considered national communications facilities



### 47 U.S. Code § 1455

Notwithstanding section 704 of the Telecommunications Act of 1996 (Public Law 104-104) or any other provision of law, a State or local government may not deny, and shall ...

### Chapter 17.136 WIRELESS COMMUNICATION FACILITIES

"Underground facilities" means utility and telecommunications facilities located under the surface of the ground, excluding the underground foundations or supports for overhead facilities.



### Chapter 17.136 WIRELESS COMMUNICATION FACILITIES

"Underground facilities" means utility and telecommunications facilities located under the surface of the ground, excluding the underground foundations or supports for overhead facilities.



### FEDERAL COMMUNICATIONS COMMISSION FACT SHEET

A traditional SMR system consists of one or more base station transmitters, one or more antennas and end user radio equipment which often



consists of a mobile radio unit either provided by ...



## WIRELESS COMMUNICATIONS FACILITIES

Wireless Communications Facility (WCF): The set of equipment and network components including antennas, transmitters, receivers, base stations, cabling and accessory equipment, ...

### eCFR :: 47 CFR Part 9 -

Any common carrier engaged in interstate Communication by wire or radio as defined in section 3 (h) of the Communications Act of 1934, as amended (the Act), and any common carrier ...



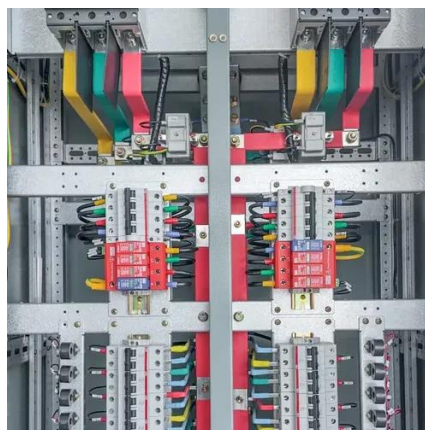
### [The Federal Communications Commission: Structure, ...](#)

The mission of the FCC is to make available for all people of the United States, "without discrimination on the basis of race, color, religion, national origin, or sex, a rapid, ...



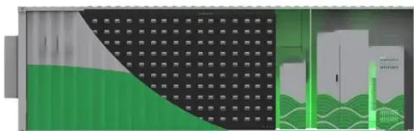
## Telecom infrastructure sharing

An operator can lease a part of its spectrum to another operator on commercial terms. Though this mechanism, along with that of MVNOs, exists in the US, Europe, Singapore and Australia.



## eCFR :: 47 CFR Part 25 Subpart A -

A terrestrial mobile facility used to transmit communications to or receive communications from an ancillary terrestrial component base station or a space station.



## 47 CFR § 1.6100

(1) Base station. A structure or equipment at a fixed location that enables Commission -licensed or authorized wireless communications between user equipment and a communications network.



## [2025 M Street, N.W., Washington, DC](#) [20554 FACT SHEET #2](#)

Facilities that are categorically excluded need not undergo routine evaluation for compliance with the Commission's guidelines, but they nevertheless must comply with these guidelines, and ...





## Contact Us

---

For inquiries, pricing, or partnerships:

<https://sccd-sk.eu>

Phone: +32 2 808 71 94

Email: [info@sccd-sk.eu](mailto:info@sccd-sk.eu)

Scan QR code for WhatsApp.

