



Are there any inverters that come with lithium iron phosphate batteries





Overview

Yes, you can connect an inverter to a lithium battery. Lithium batteries, particularly Lithium Iron Phosphate (LiFePO₄) batteries, are well-suited for use with inverters due to their high efficiency, lightweight design, and ability to deliver consistent power.

Yes, you can connect an inverter to a lithium battery. Lithium batteries, particularly Lithium Iron Phosphate (LiFePO₄) batteries, are well-suited for use with inverters due to their high efficiency, lightweight design, and ability to deliver consistent power.

What really stood out is its intelligent charging system—smart 3-level, trickle, and 0V activation—ensuring my LiFePO₄ batteries stay healthy long-term. Compared to smaller inverters, this one combines power, stability, and safety in a compact design, making it the best for both emergency backup.

When selecting a lithium iron phosphate (LiFePO₄) battery for an inverter, durability, cycle life, safety, and compatibility matter most. The following picks showcase models designed to work with various inverter setups, from compact portable systems to home backup solutions. Each product includes.

Before you decide to pair a lithium-ion battery with your existing inverter, it's essential to consider several factors. These include the inverter's voltage, charging algorithm, and overall compatibility with lithium-ion technology. Not all inverters are created equal. Some may be specifically.

The short answer is no - proper inverter matching is crucial for optimal performance and safety. Let's examine the key compatibility factors for lithium battery and LiFePO₄ battery systems. Lithium batteries require specific inverter features: Voltage Matching Must support your battery bank's.

IPI® energy storage products use Lithium Iron Phosphate (LiFePO₄) battery chemistry, also known as LFP (lithium ferro-phosphate) offering a longer cycle life, and none of the toxicity or fire hazards of other Lithium technologies. The unique KiloVault Battery Management System provides you with.

Choosing the best inverter for lithium batteries is essential for maximizing the



efficiency and longevity of your power setup. Whether for off-grid solar systems, RVs, or emergency backup, inverters convert battery power to usable AC electricity. Below is a comparison table summarizing top-quality.



Are there any inverters that come with lithium iron phosphate batteries



[Lithium Battery for Inverter: Pros, Specs, and Tips](#)

A lithium battery for inverter is a rechargeable battery that uses lithium-ion technology to store energy. It works with inverters by delivering direct current (DC), which the ...

IPI® All-in-One Off-Grid Inverter

IPI® Batteries harnesses the power of lithium iron phosphate (LiFePO₄) to bring you the most efficient, stable, and powerful lithium-ion battery on the market.



Best Inverter For Lifepo4 Batteries [Updated On: December 2025]

According to a comparison by Battery University (2021), an inverter with a self-discharge rate of less than 2% monthly is ideal for maintaining the charge of LiFePO₄ batteries.

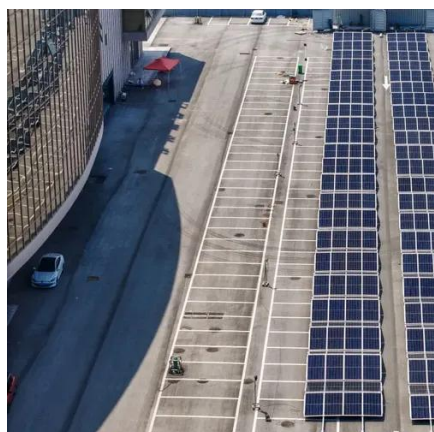


Lithium Iron Phosphate Battery for Inverter Systems: Advanced ...

Discover the superior performance, safety, and reliability of lithium iron phosphate batteries for inverter systems. Learn about their long lifespan,



efficient operation, and cost-effective energy ...



[Best Inverter For Lifepo4 Batteries](#) [\[Updated On: ...\]](#)

According to a comparison by Battery University (2021), an inverter with a self-discharge rate of less than 2% monthly is ideal for ...

Exploring the Future of Energy Storage with Inverters and LiFePO4 Batteries

Pairing LiFePO4 batteries with inverter systems is a forward-thinking choice for modern energy storage needs. These batteries offer unparalleled performance, longevity, and ...



Compatibility of Lithium-Ion Batteries with Existing Inverters

This blog post will walk you through the essentials of lithium-ion batteries, their benefits, and the steps to seamlessly integrate them with your current inverter setup.



Best Inverters for Lithium Batteries: Reliable Power Solutions for ...

Below is a comparison table summarizing top-quality inverter-compatible lithium battery products and complete solar kits to help guide your purchase decision. Check Price on ...



Best Lithium Iron Phosphate Battery for Inverters: Top 5 Choices ...

When selecting a lithium iron phosphate (LiFePO_4) battery for an inverter, durability, cycle life, safety, and compatibility matter most. The following picks showcase ...

[Can I Connect Inverter to Lithium Battery?](#)

Yes, you can connect an inverter to a lithium battery. Lithium batteries, particularly Lithium Iron Phosphate (LiFePO_4) batteries, are well-suited for use with inverters due to their ...



[Can Lithium Batteries Work With Any Type of ...](#)

The short answer is no - proper inverter matching is crucial for optimal performance and safety. Let's examine the key compatibility ...





[Can Lithium Batteries Work With Any Type of Inverter?](#)

The short answer is no - proper inverter matching is crucial for optimal performance and safety. Let's examine the key compatibility factors for lithium battery and LiFePO4 battery ...



[Compatibility of Lithium-Ion Batteries with Existing ...](#)

This blog post will walk you through the essentials of ...



Contact Us

For inquiries, pricing, or partnerships:

<https://sccd-sk.eu>

Phone: +32 2 808 71 94

Email: info@sccd-sk.eu

Scan QR code for WhatsApp.

