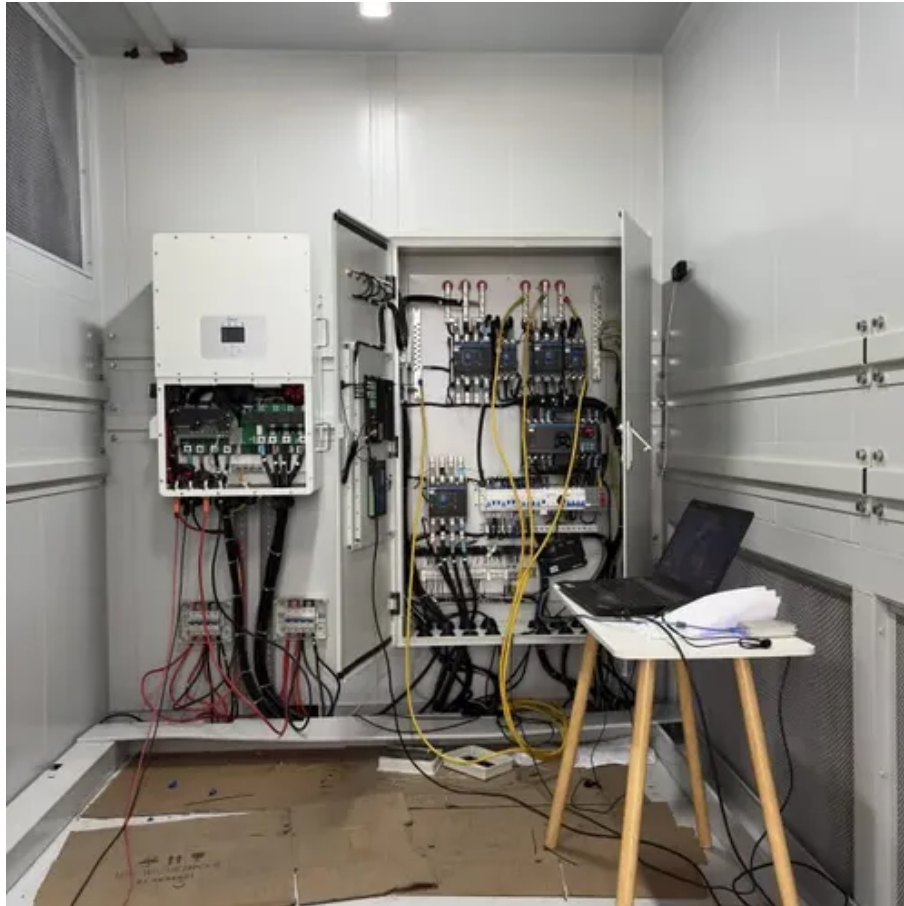




# Assembly of solar panels manufacturers





## Assembly of solar panels manufacturers

---



### How to write if-else in assembly?

How to write the equal condition (in the question) in assembly? Your example has an else statement while mine uses an else if.

### What does the dollar sign (\$) mean in x86 assembly when ...

What does the dollar sign (\$) mean in x86 assembly when calculating string lengths like "\$ - label"? [duplicate] Asked 13 years, 8 months ago Modified 8 years, 2 months ...



### What exactly is an Assembly in C# or ?

Could you please explain what is an Assembly in C# or ? Where does it begin and where does it end? What important information should I know about Assemblies?

### **What do the dollar (\$) and percentage (%) signs represent in x86 ...**

I am trying to understand how the assembly language works for a micro-computer architecture



class, and I keep facing different syntaxes in examples: `sub $48, %esp` `mov ...`



## x86

can anyone give me a comprehensive description about ORG directive? When and why is it used in assembly written applications? Using Nasm on x86 or AMD64.

## terminology

The assembly is a piece of code/executable that is in machine executable code. This might be an obj, exe, dll, It is the result of a compile. The assembler is the "compiler" ...



There are three assembly version attributes. What are differences? Is it ok if I use AssemblyVersion and ignore the rest? MSDN says: AssemblyVersion: Specifies the version of ...



## assembly

What is the actual purpose and use of the EDI & ESI registers in assembler? I know they are used for string operations for one thing. Can someone also give an example?



### [How to write hello world in assembly under Windows?](#)

I wanted to write something basic in assembly under Windows. I'm using NASM, but I can't get anything working. How do I write and compile a hello world program without the help of C ...



### **What does the 'and' instruction do to the operands in assembly ...**

What does the 'and' instruction do in assembly language? I was told that it checks the bit order of the operands and sets the 1s to true and anything else to false, but I don't know ...





## Contact Us

---

For inquiries, pricing, or partnerships:

<https://sccd-sk.eu>

Phone: +32 2 808 71 94

Email: [info@sccd-sk.eu](mailto:info@sccd-sk.eu)

Scan QR code for WhatsApp.

