



Base station backup power safety





Overview

This article will explore in detail how to secure backup power for telecom base stations, discussing the components involved, advanced technologies, best practices, and future trends to ensure continuous operation and resilience in the face of disruptions.

This article will explore in detail how to secure backup power for telecom base stations, discussing the components involved, advanced technologies, best practices, and future trends to ensure continuous operation and resilience in the face of disruptions.

This article will explore in detail how to secure backup power for telecom base stations, discussing the components involved, advanced technologies, best practices, and future trends to ensure continuous operation and resilience in the face of disruptions. Telecom base stations are often installed.

Telecom base station backup batteries are essential for ensuring uninterrupted communication by providing reliable, long-lasting power during outages. Critical aspects include battery chemistry, capacity, cycle life, safety features, thermal management, and intelligent battery management systems.

Backup power is a critical consideration for TETRA base stations, ensuring uninterrupted communication in the event of a primary power failure. As a TETRA base station supplier, we understand the importance of reliable backup power solutions to maintain the integrity of mission - critical.

As 5G networks proliferate globally, base station energy storage systems face unprecedented safety challenges. Did you know that a single thermal runaway incident can disable an entire urban cell cluster?

With over 7 million telecom towers worldwide requiring backup power, why aren't we.

ESTEL battery backup systems excel in meeting these challenges, offering an uninterruptible power supply tailored to the needs of telecommunications equipment. By choosing the right backup system, you safeguard your base stations against power disruptions and ensure seamless connectivity. Check how.



When natural disasters cut off power grids, when extreme weather threatens power supply safety, our communication backup power system with intelligent charge/discharge management and military-grade protection becomes the "second lifeline" for base station equipment. 45V output meets RRU equipment.



Base station backup power safety



What Powers Telecom Base Stations During Outages?

Telecom batteries for base stations are backup power systems using valve-regulated lead-acid (VRLA) or lithium-ion batteries. They ensure uninterrupted connectivity ...

Telecom Base Backup Power -- ONESUN. The Zero-Downtime ...

Given these challenges, a telecom base station backup power system must ensure instant power switching, high reliability, efficiency, and low maintenance costs.



What Are the Critical Aspects of Telecom Base Station Backup ...

Critical aspects include battery chemistry, capacity, cycle life, safety features, thermal management, and intelligent battery management systems. These factors collectively ...

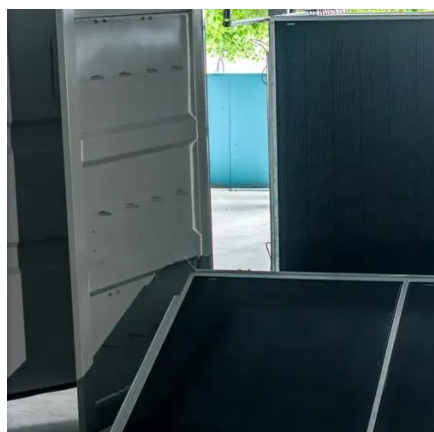


How to Select the Best ESTEL Battery Backup for Base Stations

By choosing the right backup system, you safeguard your base stations against power disruptions and ensure seamless connectivity.



Check how much power you need. Add ...



[Your Guide to Backup Power Systems for Public Buildings](#)

Learn about designing reliable backup power systems for public safety buildings. Discover key considerations, code insights, and funding strategies.

Telecom Base Station Backup Power Solution: Design Guide for ...

Designing a 48V 100Ah LiFePO4 battery pack for telecom base stations requires careful consideration of electrical performance, thermal management, safety protections, and ...



[Base Station Energy Storage Safety: Protecting Critical ...](#)

As 5G networks proliferate globally, base station energy storage systems face unprecedented safety challenges. Did you know that a single thermal runaway incident can disable an entire ...





[Communication Base Station Backup Battery](#)

When natural disasters cut off power grids, when extreme weather threatens power supply safety, our communication backup power system with intelligent charge/discharge management and ...



[Securing Backup Power for Telecom Base Stations - leagend](#)

This article will explore in detail how to secure backup power for telecom base stations, discussing the components involved, advanced technologies, best practices, and ...

[Securing Backup Power for Telecom Base Stations ...](#)

This article will explore in detail how to secure backup power for telecom base stations, discussing the components involved, advanced ...



[What are the backup power options for a TETRA Base Station?](#)

Battery backup systems are one of the most common and widely used backup power options for TETRA base stations. They provide an immediate source of power when the main grid fails, ...



Contact Us

For inquiries, pricing, or partnerships:

<https://sccd-sk.eu>

Phone: +32 2 808 71 94

Email: info@sccd-sk.eu

Scan QR code for WhatsApp.

