



Base station battery pack charging box load





Overview

The Base Station will accept an input voltage range of 8 - 30 V for operation. 19 V is required to charge the internal battery cells. Charging is achieved by using the supplied mains power adapter.

The Base Station will accept an input voltage range of 8 - 30 V for operation. 19 V is required to charge the internal battery cells. Charging is achieved by using the supplied mains power adapter.

I've got a 30Ah LifePO4 battery wired to a small solar setup, as well as a standard pug in charger/maintainer box wired in as well in case solar just isn't available. All neatly packed into a box on the floor under my desk. Eliminating the solar component entirely, this battery and charger would.

The Electrical Checklist is intended to be utilized as a guideline for field inspections of residential and small commercial battery energy storage systems. It can be used directly by local code enforcement officers or provided to a third-party inspection agency, where applicable. The Battery Energy.

Among various battery technologies, Lithium Iron Phosphate (LiFePO4) batteries stand out as the ideal choice for telecom base station backup power due to their high safety, long lifespan, and excellent thermal stability. This guide outlines the design considerations for a 48V 100Ah LiFePO4 battery.

This article will help you interpret battery specifications, estimate operating life, and understand the relationship between capacity, load, and environment. Battery power is a must-have for modern devices—even plugged-in devices frequently have internal batteries to preserve critical systems when.

LISTA electrical cabinets are perfect for the safe, personal storage of battery-powered devices of all kinds. These robust all-rounders are idea for offices and administrative functions, schools, universities and other public buildings. With their wide range of designs and their space-saving.

This product is a lithium iron phosphate battery (LFP LiFePO4) composed of 16 cells in series. Which is suitable for home energy storage systems. It can be customized according to customer needs to meet diverse application scenarios and provide



stable power for various equipment of users. 4.



Base station battery pack charging box load

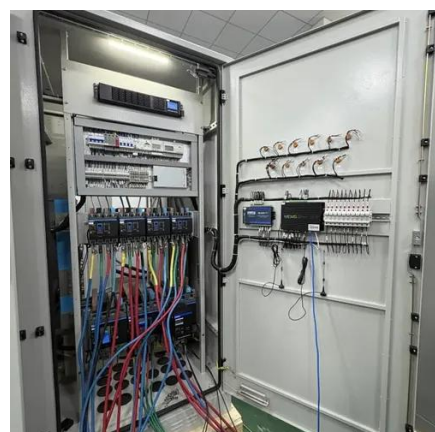


[Power Supply Box vs. Battery for base setup](#)

The battery plant (commercial term for battery strings and a charger) is 5 strings of 105 AH 12 volt AGM batteries and a modular rectifier (charger / power supply) that is 180 amp ...

[BR-BOX-Stackable Battery Pack Installation & Operation ...](#)

The battery base is packed separately, each base is equipped with 4 horizontal adjustable universal wheels, customers can purchase the battery base according to the number of ...



Telecom Base Station Backup Power Solution: Design Guide for ...

This guide outlines the design considerations for a 48V 100Ah LiFePO4 battery pack, highlighting its technical advantages, key design elements, and applications in telecom ...

[Battery Pack Calculator , Good Calculators](#)

Here's a useful battery pack calculator for calculating the parameters of battery packs, including lithium-ion batteries. Use it to know the voltage, capacity, energy, and maximum discharge ...



Battery Energy Storage System Electrical Checklist

For battery racks, there shall be a minimum clearance of 1 inch between a cell container and any wall or structure on the side not requiring access for maintenance.



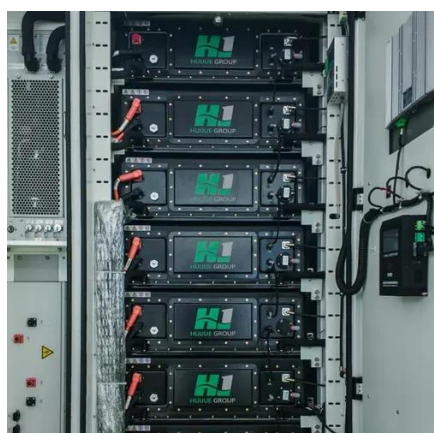
LISTA

Thanks to its high resistance to light and weather, the LISTA e-bike charging station is ideally suited for the central supply of e-bike and pedelec batteries for outdoor use. Each ...



LI-ION BATTERY SOLUTION FOR TELECOM BASE STATION

BTS solution which . r performance, environ.



Designing a Battery Pack That's Right For



Your Application

Learn how to design the battery array that best fits your system's power requirements. This article will help you interpret battery specifications, estimate operating life, ...



02

Charging of the internal battery pack will normally take approximately 4 hours from empty. The fast charge temperature range of the internal battery pack is above 10°C and below 50°C. ...

Station Battery

As a battery's power throughput is only limited by the power demanded and supplied, it can take any amount of power and supply any amount of power. This means that it ...



Designing a Battery Pack That's Right For Your ...

Learn how to design the battery array that best fits your ...

Telecom Base Station Backup Power



Solution: ...

This guide outlines the design considerations for a 48V 100Ah LiFePO4 battery pack, highlighting its technical advantages, key design ...





Contact Us

For inquiries, pricing, or partnerships:

<https://sccd-sk.eu>

Phone: +32 2 808 71 94

Email: info@sccd-sk.eu

Scan QR code for WhatsApp.

