



Base station communication survey





Overview

In the context of external land surveying, a base station is a receiver at an accurately-known fixed location which is used to derive correction information for nearby portable GPS receivers. This correction data allows and other effects to be corrected out of the position data obtained by the mobile stations, which gives greatly increased location precision and accuracy over the results obtained by uncorrected GPS receivers.



Base station communication survey

High-Precision GPS RTK Base Station: Professional Surveying ...



Advanced GPS RTK base station offering centimeter-level accuracy, multiple constellation support, and versatile communication options for surveying, construction, and precision ...

Base station

In the context of external land surveying, a base station is a GPS receiver at an accurately-known fixed location which is used to derive correction information for nearby portable GPS receivers.



[GPS and GNSS receivers, bases and rovers for ...](#)

GPS or GNSS receivers for base and rover setup. Ideal for survey applications, construction site layout/stakeout, grade checking, material ...

Base station

OverviewLand surveyingComputer networkingWireless communicationsSee also

In the context of external land surveying, a base



station is a GPS receiver at an accurately-known fixed location which is used to derive correction information for nearby portable GPS receivers. This correction data allows propagation and other effects to be corrected out of the position data obtained by the mobile stations, which gives greatly increased location precision and accuracy over the results obtained by uncorrected GPS receivers.



Complete Guide to GNSS RTK: Base Station, Rover, VRS, and ...

Using both the rover and the base allows you to determine your coordinates not just "somewhere nearby" like with a regular GPS navigator, but with centimeter or even ...

Maximizing Efficiency with UHF Radios in Surveying and Mapping

UHF radios are a critical component in modern surveying workflows, enabling seamless communication between GNSS base stations and rovers. These radios transmit ...

Commercial and Industrial ESS

Air Cooling / Liquid Cooling

- Budget Friendly Solution
- Renewable Energy Integration
- Modular Design for Flexible Expansion



[Understanding RTK GPS: Real-Time Kinematic ...](#)

We'll explain how it works: a fixed base station monitors satellite signals and calculates positioning errors, then transmits real-time ...



Setting up the GNSS base station

The SPS GNSS modular receivers (such as the R750) have a front panel and keypad that enables the base station receiver to be initialized and set up without needing a controller; ...



[Maximizing Efficiency with UHF Radios in](#)

[...](#)

UHF radios are a critical component in modern surveying workflows, enabling seamless communication between GNSS base ...

[RTK GPS Surveying Equipment: SMA26](#) [RTK ...](#)

The SMA26 RTK Rover + Base is a reliable and versatile tool for precise positioning and measurement. With its built-in GNSS antenna, ...



[What is the Point of an RTK Base Station?](#)

Learn why base stations are essential for reliable, high-precision RTK surveys and how to select the right one for your work.



[Understanding RTK GPS: Real-Time Kinematic Technology ...](#)

We'll explain how it works: a fixed base station monitors satellite signals and calculates positioning errors, then transmits real-time corrections to mobile receivers within a ...

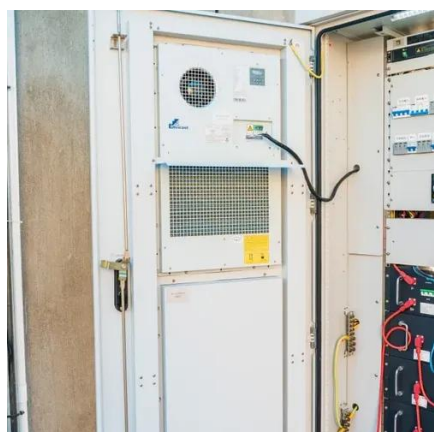


[Complete Guide to GNSS RTK: Base Station, ...](#)

Using both the rover and the base allows you to determine ...

GPS and GNSS receivers, bases and rovers for positioning ...

GPS or GNSS receivers for base and rover setup. Ideal for survey applications, construction site layout/stakeout, grade checking, material volume calculations, and base stations.



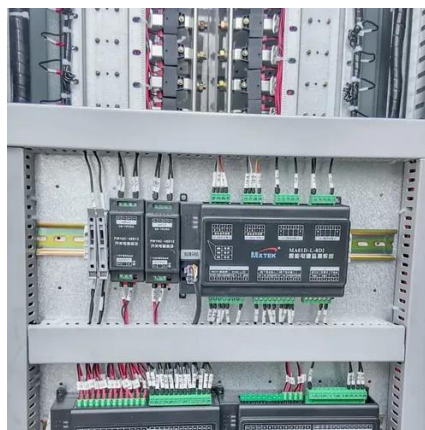
[Lesson 8: Real-Time Global Positioning System Surveying](#)

A good way to do this is to set up a GPS/GNSS receiver on a station whose position is known exactly, a base station. This base station receiver's computer can calculate its position from ...



[RTK GPS Surveying Equipment: SMA26 RTK Rover + Base with ...](#)

The SMA26 RTK Rover + Base is a reliable and versatile tool for precise positioning and measurement. With its built-in GNSS antenna, high-precision board, and ...



[What is the Point of an RTK Base Station?](#)

Learn why base stations are essential for reliable, high-precision RTK surveys and how to select the right one ...



Contact Us

For inquiries, pricing, or partnerships:

<https://sccd-sk.eu>

Phone: +32 2 808 71 94

Email: info@sccd-sk.eu

Scan QR code for WhatsApp.

