



Base station lead-acid battery cycle times





Overview

They require 20–50 full cycles to reach peak capacity and field usage does this. During breaking-in, manufacturers recommend going easy on the battery. Starter batteries are less critical and do not need priming.

They require 20–50 full cycles to reach peak capacity and field usage does this. During breaking-in, manufacturers recommend going easy on the battery. Starter batteries are less critical and do not need priming.

and maintenance intervals for vented lead acid batteries. Key maintenance activities recommended in the table are test modes as per PRC 005- 2 and IEEE 450 recommendations. Initial conditions, site preparation, test duration, rate of discharge, temperature effect and other key factors associated with.

A lead acid battery goes through three life phases: formatting, peak and decline (Figure 1). In the formatting phase, the plates are in a sponge-like condition surrounded by liquid electrolyte. Exercising the plates allows the absorption of electrolyte, much like squeezing and releasing a hardened.

A lead-acid battery usually lasts about 200 cycles. With good maintenance, it can reach over 1500 cycles. Important factors include keeping the discharge above 50% charge and performing regular maintenance. Following these guidelines helps increase the battery's lifespan and efficiency. To prolong.

Understanding core technical parameters is critical when selecting lead-acid batteries (especially gel or lead-carbon types). This guide breaks down rated voltage, max charge/discharge currents, depth of discharge (DOD), cycle life, and power calculations to help you optimize battery lifespan and.

An increase of 8.3°C (15°F) can reduce lead-acid battery life by 50% or more. Cycle service. Discharge cycles reduce life. Lead calcium batteries can be rated for as few as 50 deep discharge cycles. Many lifetime calculations for UPS systems are based on 1 to 2 Deep discharges per year. (Deep.

Stationary lead-acid batteries remain the economical first choice for standby power batteries with discharge times between 15min and 8h; they have been well proven in practice. The battery can be kept permanently on float in a fully-charged state,



as long as both electrodes are in an.



Base station lead-acid battery cycle times



Comparison of LiFePO4 battery and lead-acid battery in base station

Explore the critical considerations in selecting batteries for base stations. This comparison between LiFePO4 and lead-acid batteries delves into power consumption, backup time, and ...

Comparison of LiFePO4 battery and lead-acid battery in base ...

Explore the critical considerations in selecting batteries for base stations. This comparison between LiFePO4 and lead-acid batteries delves into power consumption, backup time, and ...



[Battery Sizing Considerations IEEE 2020](#)

Batteries provide DC power to the switchgear equipment during an outage. Best practice is to have individual batteries for each load/application. *Lead-Acid has a minimum sizing duration ...

[LEAD ACID BATTERY working - LIFETIME STUDY](#)

A reduction to 80% of the rated capacity is usually defined as the end of life for a lead-acid battery. Below 80%, the rate of battery deterioration



accelerates, and it is more prone to ...



[BU-804: How to Prolong Lead-acid Batteries](#)

To keep lead acid in good condition, apply a fully saturated charge lasting 14 to 16 hours. If the charge cycle does not allow this, give ...

[BU-804: How to Prolong Lead-acid Batteries](#)

To keep lead acid in good condition, apply a fully saturated charge lasting 14 to 16 hours. If the charge cycle does not allow this, give the battery a fully saturated charge once ...



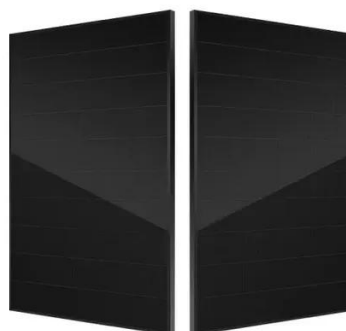
[Base station lead-acid battery charge and discharge times](#)

Carbons play a vital role in advancing the properties of lead-acid batteries for various applications, including deep depth of discharge cycling, partial state-of-charge, and



Lead Acid Battery Cycles: Lifespan, Maintenance Tips, And ...

In summary, lead-acid batteries typically last between 500 to 1,000 cycles, influenced by factors like discharge depth, temperature, and charging methods. For better ...



[Lead Acid?Lithium & LiFePO4 Battery Run Time Calculator](#)

Calculate the run time of Lead Acid, Lithium & LiFePO4 battery easily with our tool. Ideal for businesses needing accurate ...



Ultimate Guide to Base Station Power Selection: Lithium vs. Lead-Acid

LiFePO₄ is the preferred lithium battery chemistry for telecom base stations, known for its high performance and long lifespan. High energy density (120-180 Wh/kg) -- ...



Ultimate Guide to Base Station Power Selection: Lithium vs. Lead ...

LiFePO₄ is the preferred lithium battery chemistry for telecom base stations, known for its high performance and long lifespan. High energy density (120-180 Wh/kg) -- ...



[Lead-Acid Battery Technical Guide: 4 Key](#)

...

This guide breaks down rated voltage, max charge/discharge currents, depth of discharge (DOD), cycle life, and power calculations to ...



[LONG-DURATION DUTY CYCLE REQUIREMENTS: IS THE ...](#)

Stationary lead-acid batteries remain the economical first choice for standby power batteries with discharge times between 15min and 8h; they have been well proven in practice.

Lead-Acid Battery Technical Guide: 4 Key Parameters for Optimal

This guide breaks down rated voltage, max charge/discharge currents, depth of discharge (DOD), cycle life, and power calculations to help you optimize battery lifespan and ...



[Lead Acid?Lithium & LiFePO4 Battery Run Time Calculator](#)

Calculate the run time of Lead Acid, Lithium & LiFePO4 battery easily with our tool. Ideal for businesses needing accurate battery capacity and load estimates.



Contact Us

For inquiries, pricing, or partnerships:

<https://sccd-sk.eu>

Phone: +32 2 808 71 94

Email: info@sccd-sk.eu

Scan QR code for WhatsApp.

