



Base station power supply construction organization design





Overview

In this article, we target the audience of Wireless Communications Engineers working within Telecommunications Carriers, and we discuss comprehensive strategies for base station design that integrate cutting-edge engineering with powerful business intelligence and data.

In this article, we target the audience of Wireless Communications Engineers working within Telecommunications Carriers, and we discuss comprehensive strategies for base station design that integrate cutting-edge engineering with powerful business intelligence and data.

The cabinet houses critical components like main base station equipment, transmission equipment, power supply systems, and battery banks. Meanwhile, the pole serves as a mounting point for antennas, Remote Radio Units (RRUs), and other equipment, often resembling a “candied hawthorn stick” in its.

Therefore, Cheng Wentao recommends that power design engineers familiarize themselves with new material devices and high-frequency design as soon as possible, and develop design ideas to adapt to future power design work. For macro base stations, Cheng Wentao of Infineon gave some suggestions on.

5G can help realize the future of Internet of Things (IoT), connected cars and smart cities through higher speeds (up to 10 Gbps), better coverage (capacity expansion by a factor of 1,000) and improved reliability (by leveraging ultra-wide bandwidth and throughput). The traditional wireless.

Abstract: With the rapid development of mobile communication service, the construction of mobile communication base station presents the trend of rapid development, the distribution of base station is more and more wide, more and more new requirements are put forward for the maintenance management.

Modern FPGAs and processors are built using advanced nanometer processes because they often perform calculations at fast speeds using low voltages ($<0.9\text{ V}$) at high current from compact packages. Additionally, new generation FPGAs need lower core voltages to vastly improve computational speeds while.

The RRU's journey from inception to widespread adoption is, in itself, a technical



revolution designed to overcome the drawbacks of traditional integrated base stations. Traditional "integrated base stations" concentrated all processing and radio frequency (RF) units in an equipment room at the.



Base station power supply construction organization design

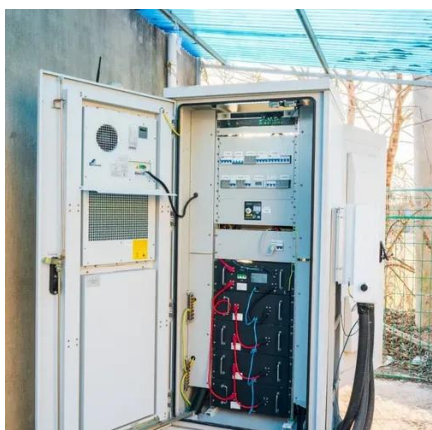


[Base Station Design for Wireless Communications Engineers](#)

In this article, we target the audience of Wireless Communications Engineers working within Telecommunications Carriers, and we discuss comprehensive strategies for base station ...

[Building better power supplies for 5G base stations](#)

Building better power supplies for 5G base stations Authored by: Alessandro Pevere, and Francesco Di Domenico, both at Infineon Technologies Infineon Technologies - Technical ...



[5G macro base station power supply design strategy and ...](#)

Suggestions on 5G small base station power supply design. In terms of small base stations, Cheng Wentao believes that small base stations in the 5G era are very different from ...

[Research on Design of Switching Power Supply Based on ...](#)

Abstract: With the rapid development of mobile communication service, the construction of mobile communication base station presents the trend of



rapid development, the distribution of base



[Complete Guide to 5G Base Station Construction](#)

Explore how 5G base stations are built--from site planning and cabinet installation to power systems and cooling solutions. Learn the ...

The Road to Robust 5G: A Deep Dive into Base Station Power Supply

Leveraging our market-proven product performance and system adaptability, we have built a product line that covers all power supply scenarios for base stations, providing ...



[Optimization of Communication Base Station Battery ...](#)

In the communication power supply field, base station interruptions may occur due to sudden natural disasters or unstable power supplies. This work studies the optimization of ...





Small Cells, Big Impact: Designing Power Solutions for 5G ...

The need to increase the number of base stations to provide wider and more dense coverage has led to the creation of small cells. Small cells are a new part of the 5G platform that increase ...



Selecting the Right Supplies for Powering 5G Base Stations

These tools simplify the task of selecting the right power management solutions for these devices and, thereby, provide an optimal power solution for 5G base stations components.

Optimum sizing and configuration of electrical system for

This study develops a mathematical model and investigates an optimization approach for optimal sizing and deployment of solar photovoltaic (PV), battery bank storage ...

Our Lifepo4 batteries can be connected in parallels and in series for larger capacity and voltage.



Complete Guide to 5G Base Station Construction , Key Steps, ...

Explore how 5G base stations are built--from site planning and cabinet installation to power systems and cooling solutions. Learn the essential components, technologies, and ...



Contact Us

For inquiries, pricing, or partnerships:

<https://sccd-sk.eu>

Phone: +32 2 808 71 94

Email: info@sccd-sk.eu

Scan QR code for WhatsApp.

