



Base station user communication



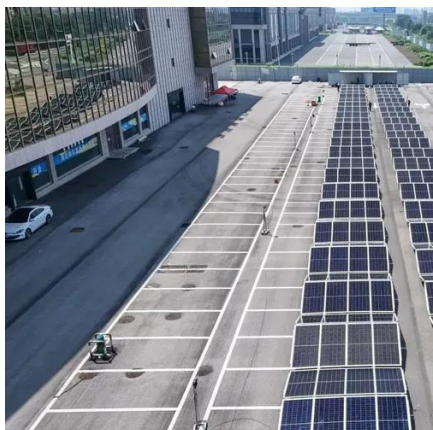


Overview

A base transceiver station (BTS) or a baseband unit (BBU) is a piece of equipment that facilitates between (UE) and a network. UEs are devices like (handsets), phones, computers with connectivity, or antennas mounted on buildings or telecommunication towers. The network can be that of any of the wireless communication technologies like , , , , or other



Base station user communication



[Understanding Base Stations in Mobile ...](#)

By facilitating effective communication, base stations ensure users have consistent and high-quality service. They execute several key functions ...

Base Stations

Base stations form a key part of modern wireless communication networks because they offer some crucial advantages, ...



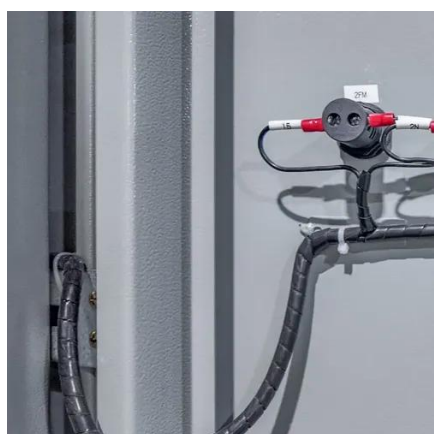
[What is a Base Station in Telecommunications?](#)

Discover the role and functionality of a base station in telecommunications networks. Learn how these critical components manage communication between mobile devices and the network, ...



Base Stations

Base stations form a key part of modern wireless communication networks because they offer some crucial advantages, such as wide coverage, continuous communications and ...



[What is a Base Station in Telecommunications?](#)

Discover the role and functionality of a base station in telecommunications networks. Learn how these critical components manage communication ...

[Base Station's Role in Wireless Communication Networks](#)

The base station transmits and receives signals, ensuring seamless communication over radio frequencies. In essence, it acts as the intermediary between the user and the network, ...



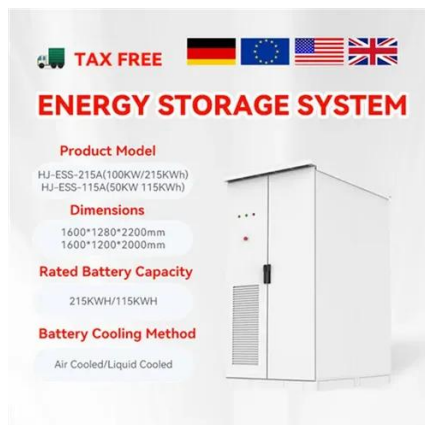
[Understanding Base Stations in Mobile Communication](#)

By facilitating effective communication, base stations ensure users have consistent and high-quality service. They execute several key functions that support mobile connectivity and ...



What Is A Base Station?

A base station is an integral component of wireless communication networks, serving as a central point that manages the transmission and reception of signals between ...



What is a base station?

In telecommunications, a base station is a fixed transceiver that is the main communication point for one or more wireless mobile client ...

Base Station's Role in Wireless Communication Networks

The base station transmits and receives signals, ensuring seamless communication over radio frequencies. In essence, it acts as the intermediary between the ...



What is a base station?

In telecommunications, a base station is a fixed transceiver that is the main communication point for one or more wireless mobile client devices. A base station serves as ...





Base Stations and Cell Towers: The Pillars of Mobile Connectivity

Base stations and cell towers are critical components of cellular communication systems, serving as the infrastructure that supports seamless mobile connectivity. These ...



What Does a Base Station Do and Why Is It Essential for ...

A base station is a fixed point of communication between mobile devices and the wider telecom network. It transmits and receives radio signals, enabling your phone to access ...

What Is the Role of a Base Station in Wireless Communication?

Base stations are critical components in wireless communication networks, serving as the intermediary between mobile devices and the core network. They play a vital role in ...

DETAILS AND PACKAGING



- 1 USER MANUAL PDF
- 2 RJ45 Cable For RS485/CAN
- 3 Battery in Parallel Cables
- 4 RJ45 TO USB Monitor Cable
- 5 MS Terminal*4

Base transceiver station

A base transceiver station (BTS) or a baseband unit (BBU) is a piece of equipment that facilitates wireless communication between user equipment (UE) and a network. UEs are devices like mobile phones (handsets), WLL phones, computers with wireless Internet connectivity, or antennas mounted on buildings or telecommunication towers. The network can be that of any of the wireless communication technologies like GSM, CDMA, wireless local loop, Wi-Fi, WiMAX or other





Base transceiver station

A base transceiver station (BTS) or a baseband unit[1] (BBU) is a piece of equipment that facilitates wireless communication between user equipment (UE) and a network.





Contact Us

For inquiries, pricing, or partnerships:

<https://sccd-sk.eu>

Phone: +32 2 808 71 94

Email: info@sccd-sk.eu

Scan QR code for WhatsApp.

