



Base station wind power supply hardware





Overview

What is wind turbine maintenance & construction equipment?

Wind Turbine maintenance and construction equipment can be divided into two broad categories: Tools and Safety Equipment. The tools help you complete the job, and safety equipment is the gear that keeps you safe while working. The fall protection roots of GME position us to uniquely meet the needs of the wind industry.

What equipment do you need for a wind turbine?

Whether you are looking for bags and/or buckets, harnesses, helmets, headlamps, gloves, safety glasses, fall protection, rescue equipment, torque wrenches, or tools, we've got you covered. Wind Turbine maintenance and construction equipment can be divided into two broad categories: Tools and Safety Equipment.

What gear do Windpower techs need?

In the field, and on the tower, windpower techs need gear to to keep them safe and ready for the climb. Whether you are looking for bags and/or buckets, harnesses, helmets, headlamps, gloves, safety glasses, fall protection, rescue equipment, torque wrenches, or tools, we've got you covered.



Base station wind power supply hardware



Optimal sizing of photovoltaic-wind-diesel-battery power supply ...

Having all the above facts in mind, the main idea of this paper is therefore to theoretically describe and software implement a novel planning tool for optimal sizing of ...

[Wind Energy Technician, Tools, Equipment & Safety Gear](#)

If you have any questions about the proper use of our complete line of wind industry equipment and safety gear or need help finding any equipment, please feel free to check in with one of ...



[Wind Energy Technician, Tools, Equipment](#)

If you have any questions about the proper use of our complete line of wind industry equipment and safety gear or need help finding any equipment, ...



[Outdoor Wind Power Base Station Supplies](#)

Outdoor Wind Power Base Station Supplies , MSC Direct offers quality Power Supplies at a great value. Find premium products to last a lifetime!



Wind Turbine Hardware , Dyson Corp.

Serving the renewable energy industry with wind turbine hardware, foundation bolts, anchor assemblies, and more. Find out more about our services.



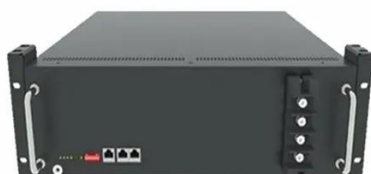
[Research on Capacity Optimization Configuration of Wind/PV](#)

Under the "dual carbon" goals, enhancing the energy supply for communication base stations is crucial for energy conservation and emission reduction. An individual base station with ...



Wind Turbine Hardware , Dyson Corp.

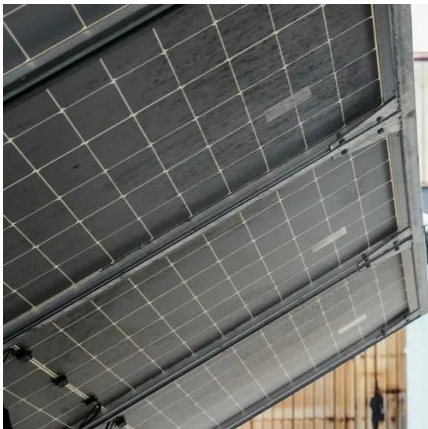
Serving the renewable energy industry with wind turbine hardware, foundation bolts, anchor assemblies, and more. Find out more about our ...





Wind Energy: UPS & Power Supply Modules for Pitch-Systems , ALFA Power

Reliable and for harsh environments optimised AC & DC power supplies for pitch control systems and condition monitoring in wind power systems to reduce downtimes.



Solar-Wind Hybrid Power for Base Stations: Why It's Preferred

For a single energy system, such as pure photovoltaic or wind power, a base station needs to be equipped with a 5-7 day energy storage battery. In contrast, wind-solar ...

Power Supplies for Two-Way Radio Base Station installations

Power Supplies for Two-Way Radio Base Station installations. In Stock, Ready to Ship!



Wind Energy: UPS & Power Supply Modules for ...

Reliable and for harsh environments optimised AC & DC power supplies for pitch control systems and condition monitoring in wind power systems to ...



Renewable Energy Sources for Power Supply of Base ...

In this paper, several BS power supply systems that are based on renewable energy sources are presented and discussed.



Wind Power Supplies for sale , eBay

Get the best deals on Wind Power Supplies when you shop the largest online selection at eBay . Free shipping on many items , Browse your favorite brands , affordable prices.



Contact Us

For inquiries, pricing, or partnerships:

<https://sccd-sk.eu>

Phone: +32 2 808 71 94

Email: info@sccd-sk.eu

Scan QR code for WhatsApp.

