



# Belarus LTE emergency communication green base station





## Overview

---

To rapidly restore damaged communication systems, we propose a UAV-based mobile base station equipped with Public Safety LTE (PS-LTE) technology to provide standalone communication capabilities.

To rapidly restore damaged communication systems, we propose a UAV-based mobile base station equipped with Public Safety LTE (PS-LTE) technology to provide standalone communication capabilities.

To rapidly restore damaged communication systems, we propose a UAV-based mobile base station equipped with Public Safety LTE (PS-LTE) technology to provide standalone communication capabilities. The proposed system includes PS-LTE functionalities, mission-critical push-to-talk, proximity-based.

MTS Belarus has significantly expanded its LTE-800 network, extending high-speed internet and voice services to 1,434 additional villages for the first time. This expansion, enabled by 515 new base stations, has made LTE services available in over 23,000 small settlements across six regions of the.

Reported by Srikapardhi January 14th, 2024 at 04:20 pm 0 MTS Belarus is elevating mobile communication in 350 remote settlements, doubling base station coverage using RAN Sharing technology. 50 percent increase in base station coverage with RAN Sharing. Improved communication experienced in key.

How does 6Wresearch market report help businesses in making strategic decisions?

6Wresearch actively monitors the Belarus LTE Base Station System Market and publishes its comprehensive annual report, highlighting emerging trends, growth drivers, revenue analysis, and forecast outlook. Our insights.

According to Belarus' common infrastructure provider Belarusian Cloud Technologies (beCloud) has announced that, as a result of ongoing efforts to strengthen its 4G LTE network in the country, it now has 3,047 base transceiver stations (BTS) operating across the country – a 23% increase since the.

On April 1, 2025, President Alexander Lukashenko signed Decree No. 139 to launch



an investment project focused on building a new telecommunications network based on IMT-2020 (5G) technology. The initiative will expand Belarus's digital infrastructure by establishing a unified cellular network under.



## Belarus LTE emergency communication green base station

---



### [MTS Belarus upgrades almost 1,500 LTE base stations in 2025](#)

MTS Belarus said it upgraded almost 1,500 of its LTE base stations in 2025. More than 500 additional antennas were launched on 214 base stations.

### [A1 Belarus Announces Network Upgrades and RAN Sharing ...](#)

In partnership with the infrastructure operator beCloud, A1 has combined more than 6,000 base stations in the LTE/4G standard across the 800, 1,800, and 2,600 MHz ...



### **Belarus LTE Base Station System Market (2025-2031) , Trends, ...**

Our analysts track relevant industries related to the Belarus LTE Base Station System Market, allowing our clients with actionable intelligence and reliable forecasts tailored to emerging ...

### [An Independent UAV-Based Mobile Base Station](#)

We develop a prototype of a proposed mobile base station and test its operation in an outdoor environment. The experimental results provide a



sufficient data rate to make an ...



### **beCloud reports 'more than 3,000' base stations on-air as LTE ...**

For the remainder of 2021, the company says its priority is to develop its LTE footprint in rural areas, to provide fourth-generation mobile access for people living in small settlements.



### An Overview of Emergency Communication ...

An LTE private network base station + piggyback mesh base station is adopted to expand the accident rescue area and ensure rescue ...



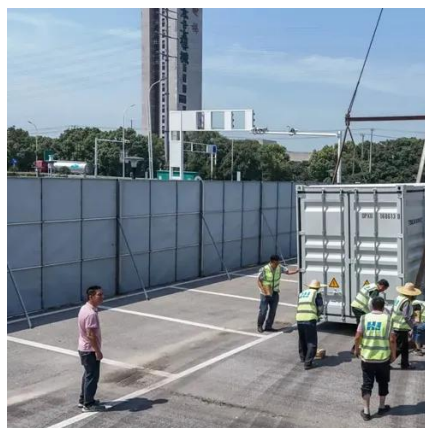
### Belarus Emergency Communication Green Base Station

An emergency communication system is necessary for first responders, who need to enter areas with no network coverage or damaged network infrastructure due to natural or man-made



## An Overview of Emergency Communication Networks

An LTE private network base station + piggyback mesh base station is adopted to expand the accident rescue area and ensure rescue communication. The system realizes ...

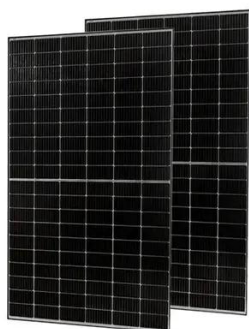


## An Independent UAV-Based Mobile Base Station

We develop a prototype of a proposed mobile base station and test its operation in an outdoor environment. The experimental results ...

## **Belarus: Presidential Decree Sets Stage for Nationwide 5G Rollout**

To accelerate deployment, the decree allows the infrastructure operator to fast-track the design and construction of base stations through a simplified approval process. For this ...



## **MTS Belarus expands LTE-800 network to 1,434 villages with 515 new base**

This expansion, enabled by 515 new base stations, has made LTE services available in over 23,000 small settlements across six regions of the country, significantly improving rural coverage.





## MTS Advances Mobile Connectivity in 350 Remote ...

MTS Belarus is elevating mobile communication in 350 remote settlements, doubling base station coverage using RAN Sharing technology.



## **MTS Belarus expands LTE-800 network to 1,434 villages with 515 ...**

This expansion, enabled by 515 new base stations, has made LTE services available in over 23,000 small settlements across six regions of the country, significantly improving rural coverage.

## **MTS Advances Mobile Connectivity in 350 Remote Belarusian ...**

MTS Belarus is elevating mobile communication in 350 remote settlements, doubling base station coverage using RAN Sharing technology.





## Contact Us

---

For inquiries, pricing, or partnerships:

<https://sccd-sk.eu>

Phone: +32 2 808 71 94

Email: [info@sccd-sk.eu](mailto:info@sccd-sk.eu)

Scan QR code for WhatsApp.

