



Belgrade EK solar container battery unit price





Belgrade EK solar container battery unit price



Belgrade

Many weekend visitors--particularly from Bosnia and Herzegovina, Croatia and Slovenia --prefer Belgrade nightlife to that of their own capitals due to its perceived friendly atmosphere, plentiful ...

Belgrade

Belgrade is the capital and largest city of Serbia. It is located at the confluence of the Sava and Danube rivers and at the crossroads of the Pannonian Plain a



[Belgrade, Serbia: All You Must Know Before You Go \(2026\)](#)

Belgrade Tourism: Tripadvisor has 188,266 reviews of Belgrade Hotels, Attractions, and Restaurants making it your best Belgrade resource.

6 Reasons to Visit Belgrade--The Affordable 'White City' of the ...

Discover Belgrade--an affordable European gem where East meets West, blending rich history, lively streets, and a dynamic café culture.



[Belgrade - Travel guide at Wikivoyage](#)

Belgrade (Serbian: Beograd, Beograd) is the capital of the Republic of Serbia. It stands at the confluence of the Danube and Sava rivers, where the rolling Pannonian Plain fetches up ...



[15 best things to do in Belgrade \(Serbia\): Our choice](#)

Wondering about things to do in the capital of Serbia? Here is our comprehensive guide to 1-3 days in Belgrade dotted with our favorite places to eat and drink coffee



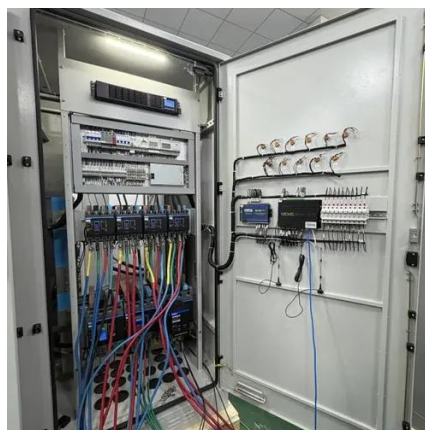
Belgrade travel

Explore the Kalemegdan Fortress, lively waterfront, buzzing nightlife and Balkan cuisine in our Belgrade travel guide. Find expert tips and top sights.



[Belgrade: History, Culture, and Timeless Charm](#)

Nestled at the confluence of two mighty rivers - the Sava and Danube - Belgrade stands as Serbia's beating heart and largest metropolis. This ancient city, a sprawling tapestry of old and ...



Sights , City of Belgrade

Welcome to the official website of the city of Belgrade. Find information about city authorities and services, important events and life in Belgrade



[Belgrade , History, Population, Map, & Facts , Britannica](#)

Belgrade, city, capital of Serbia. It lies at the confluence of the Danube and Sava rivers in the north-central part of the country. It is located at the convergence of three ...





Contact Us

For inquiries, pricing, or partnerships:

<https://sccd-sk.eu>

Phone: +32 2 808 71 94

Email: info@sccd-sk.eu

Scan QR code for WhatsApp.

