



Can Bishkek solar container lithium battery inverter be used





Overview

The short answer is no - proper inverter matching is crucial for optimal performance and safety. Let's examine the key compatibility factors for lithium battery and LiFePO4 battery systems. Lithium batteries require specific inverter features: Voltage Matching.

The short answer is no - proper inverter matching is crucial for optimal performance and safety. Let's examine the key compatibility factors for lithium battery and LiFePO4 battery systems. Lithium batteries require specific inverter features: Voltage Matching.

When setting up solar energy systems or home energy storage, a common question arises: Are lithium batteries compatible with all inverters?

The short answer is no - proper inverter matching is crucial for optimal performance and safety. Let's examine the key compatibility factors for lithium.

Among the different types of lithium-ion batteries, Lithium Iron Phosphate (LiFePO4) stands out. Known for their excellent thermal stability and longevity, LiFePO4 batteries are a reliable choice for both residential and commercial energy storage solutions. Lithium-ion batteries have several.

Understanding the Role of Inverters and Lithium Batteries An inverter is the heart of any backup power system, converting DC (direct current) energy stored in batteries into usable AC (alternating current) energy for household or commercial appliances. On the other hand, lithium batteries store.

A solar inverter is a device that converts the direct current (DC) electricity generated by your solar panels into alternating current (AC) electricity. AC is the type of electricity that powers most of the appliances and devices in your home. Think of the solar inverter as the middleman that makes.

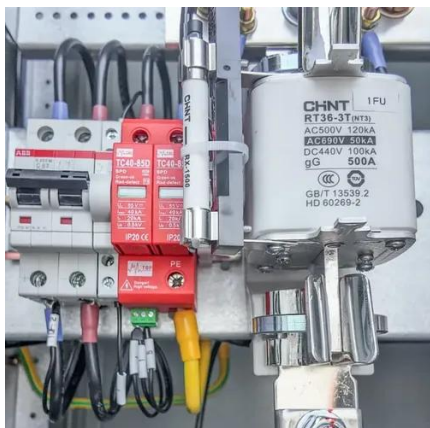
Lithium-ion batteries are rechargeable energy storage devices that have become the industry standard for storing energy. Their popularity comes from their high energy density, which allows them to store more energy in less space compared to other battery types. This makes them ideal for use in.



GSL Energy's 5 KVA hybrid inverter, for instance, is designed to support 48V LiFePO4 batteries, ensuring native compatibility. Maximum Voltage Tolerance: Fully charged lithium batteries can exceed nominal voltage (e.g., 54.6V for a 48V pack). The inverter must support this upper limit to avoid.



Can Bishkek solar container lithium battery inverter be used

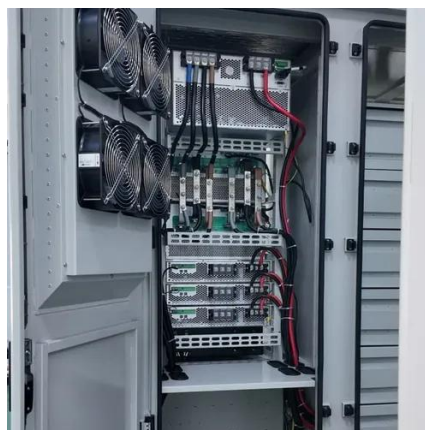


How Lithium-Ion Batteries Work with Current Solar Inverter Systems

This article will explore how lithium-ion batteries work with solar inverter systems, their benefits, and how they can help maximize your energy efficiency and performance.

Hybrid Inverter and Lithium Batteries: Setup Guide and Best ...

set up communication between lithium batteries and a hybrid inverter with our detailed step-by-step guide. Ensure optimal performance and longevity of your energy storage system by ...



[Understanding the Basics of Connecting Lithium ...](#)

The BMS controls the charging and discharging of the battery, preventing overcharging, undercharging, and temperature extremes that ...

[Importance of Compatibility Between Inverter and ...](#)

Inverters that are not designed to work with lithium batteries may overcharge or undercharge the battery, leading to premature ...



[Hybrid Inverter and Lithium Batteries: Setup Guide ...](#)

set up communication between lithium batteries and a hybrid inverter with our detailed step-by-step guide. Ensure optimal performance and longevity of ...



Lithium Battery Combined With Inverter: Key Compatibility Points

When using lithium batteries for energy storage in residential or commercial settings, precisely matching the specifications of the battery system with a compatible inverter ...



[Can Lithium Batteries Work With Any Type of ...](#)

The short answer is no - proper inverter matching is crucial for optimal performance and safety. Let's examine the key compatibility ...





Compatibility Analysis Between Lithium Batteries and Inverters

However, achieving full compatibility between lithium batteries and inverters requires consideration of multiple factors, including electrical parameters, communication ...



Can Lithium Batteries Work With Any Type of Inverter?

The short answer is no - proper inverter matching is crucial for optimal performance and safety. Let's examine the key compatibility factors for lithium battery and LiFePO4 battery ...

Compatibility of Lithium-Ion Batteries with Existing Inverters

Integrating a solar inverter with a lithium battery can take your renewable energy setup to the next level. This combination allows for better energy storage, improved efficiency, and greater ...



Lithium Batteries for Inverters: The Future of Energy Storage

Lithium batteries are transforming the landscape of renewable energy and backup power solutions, particularly when used with inverters. This comprehensive guide delves into the ...



Lithium Batteries for Inverters: The Future of ...

Lithium batteries are transforming the landscape of renewable energy and backup power solutions, particularly when used with inverters. This ...



Importance of Compatibility Between Inverter and Lithium Battery

Inverters that are not designed to work with lithium batteries may overcharge or undercharge the battery, leading to premature degradation. Ensuring compatibility means that ...

Solar Inverters with Lithium Batteries

By the end of this guide, you'll have a clear understanding of what a solar inverter with a lithium battery is, how it works, and why it might be a great choice for your energy needs.



Solar Inverters with Lithium Batteries

By the end of this guide, you'll have a clear understanding of what a solar inverter with a lithium battery is, how it works, and why it ...



Compatibility Analysis Between Lithium Batteries ...

However, achieving full compatibility between lithium batteries and inverters requires consideration of multiple factors, including electrical ...



Compatibility of Lithium-Ion Batteries with Existing ...

Integrating a solar inverter with a lithium battery can take ...



Understanding the Basics of Connecting Lithium Batteries to Inverters

The BMS controls the charging and discharging of the battery, preventing overcharging, undercharging, and temperature extremes that can damage the battery. Ensure ...





Contact Us

For inquiries, pricing, or partnerships:

<https://sccd-sk.eu>

Phone: +32 2 808 71 94

Email: info@sccd-sk.eu

Scan QR code for WhatsApp.

