



Can household solar lights be connected in series





Overview

Just like a battery, solar panels have two terminals: one positive and one negative. When you connect the positive terminal of one panel to the negative terminal of another panel, you create a series connection. When you connect two or more solar panels like this, it.

Just like a battery, solar panels have two terminals: one positive and one negative. When you connect the positive terminal of one panel to the negative terminal of another panel, you create a series connection. When you connect two or more solar panels like this, it.

One of the most frequently asked questions is whether solar LED flood lights can be connected in series or parallel. In this blog post, I will delve into this topic, exploring the technical aspects, advantages, and disadvantages of both series and parallel connections for solar LED flood lights.

Hanging solar lights in series is a straightforward task that enhances outdoor spaces with illumination while harnessing sustainable energy. 1. Planning the layout is essential, as it determines the final look and effectiveness of your lighting. 2. Securing proper installation mechanisms ensures.

Series connections are ideal for larger home solar systems (4kW+) and long distances to the inverter, but they're vulnerable to shading issues since one shaded panel affects the entire string. Parallel connections is optimal for smaller setups like RV and boat systems, offering excellent shade.

The essential differences between series and parallel wiring of solar panels are reflected in their effects on voltage and current. A series connection can increase the total system voltage while keeping the current constant. With this characteristic, in the laying of long wires, a series.

In this ultimate guide, we explore series wiring solar panels, parallel wiring solar panels, and series-parallel wiring, including pros, cons, and best applications. At Circuit Solar, we prioritize reliable connections to build robust solar energy systems that deliver clean power seamlessly.

Shading Performance Dramatically Differs: Parallel wiring maintains 83% efficiency



with 25% panel shading, while series wiring drops to just 25% efficiency under the same conditions. This makes parallel configurations essential for installations with variable shading patterns like RVs or.



Can household solar lights be connected in series



[How To Wire Solar Panels In Series Vs. Parallel](#)

Solar inverters may have a minimum operating voltage, so wiring in series allows the system to reach that threshold. When wired in parallel, the amperage increases while the voltage stays ...

[Series Vs Parallel Solar Panels: Wiring Guide](#)

In a series configuration, you connect the positive terminal of one panel to the negative terminal of the next panel, creating a chain. ...



How to connect solar panels together: Series, parallel, combo

When panels are connected in series, shade on one panel can significantly reduce the output of the entire string - like one bad bulb affecting a whole string of Christmas lights. ...

[How to connect solar panels together: Series, ...](#)

When panels are connected in series, shade on one panel can significantly reduce the output of the entire string - like one bad bulb ...



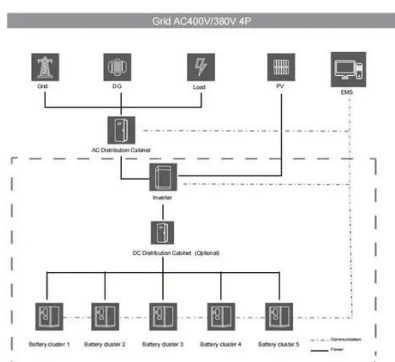
Can solar LED flood lights be connected in series or parallel?

One of the most frequently asked questions is whether solar LED flood lights can be connected in series or parallel. In this blog post, I will delve into this topic, exploring the technical aspects, ...



Solar Panel Series vs Parallel: Which is Better?

Series connections increase overall voltage while maintaining constant current, beneficial for long wire runs and certain inverters. Parallel wiring ...



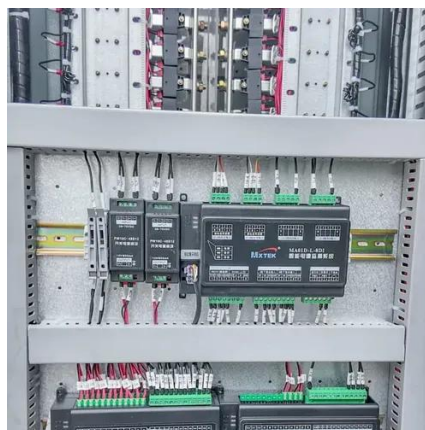
A Comprehensive Guide to Series, Parallel, and Series-Parallel

Residential solar panel wiring typically favors series or series-parallel to achieve high voltages for grid-tied inverters. This suits rooftop layouts, minimizing shading issues with ...



Connecting Solar Panels in Series or in Parallel? , EcoFlow JP

Wiring in series or parallel impacts your PV array's combined DC output in volts and amps. Series or parallel connections do not directly impact total output wattage. (Source: ...



[How to hang solar lights in series , NenPower](#)

Each solar light functions independently, reliant upon sunlight for power. However, when set up in series, the lights are linked so that ...

[Solar Panel Series vs Parallel: Which is Better? , Renogy US](#)

Series connections increase overall voltage while maintaining constant current, beneficial for long wire runs and certain inverters. Parallel wiring maintains voltage but increases current, useful ...



[Solar Panel Connection Methods: Series vs ...](#)

There is no absolute superiority or inferiority between the series and parallel connection methods of solar panels. The best ...



Series Vs Parallel Solar Panels: Wiring Guide & MPPT Tips

In a series configuration, you connect the positive terminal of one panel to the negative terminal of the next panel, creating a chain. Here's the step-by-step process:

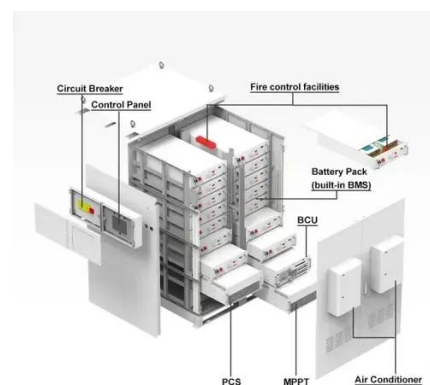


How to connect three solar lights in series

In summary, connecting three solar lights in series can lead to enhanced outdoor illumination, provided that crucial steps are followed ...

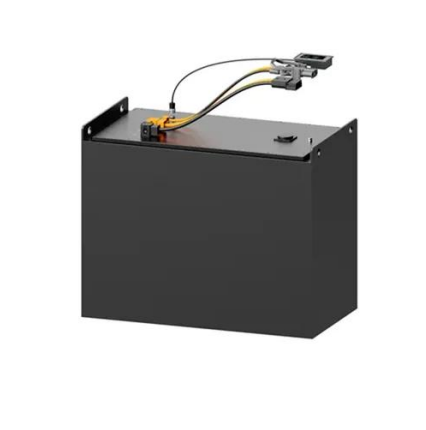
How to connect three solar lights in series , NenPower

In summary, connecting three solar lights in series can lead to enhanced outdoor illumination, provided that crucial steps are followed meticulously. The process, while ...



How to hang solar lights in series , NenPower

Each solar light functions independently, reliant upon sunlight for power. However, when set up in series, the lights are linked so that they can illuminate simultaneously.





[How To Wire Solar Panels In Series Vs. Parallel](#)

Solar inverters may have a minimum operating voltage, so wiring in series allows the system to reach that threshold. When wired in parallel, the ...



[A Comprehensive Guide to Series, Parallel, and ...](#)

Residential solar panel wiring typically favors series or series-parallel to achieve high voltages for grid-tied inverters. This suits rooftop ...



[Solar Panel Connection Methods: Series vs Parallel Analysis](#)

There is no absolute superiority or inferiority between the series and parallel connection methods of solar panels. The best connection scheme needs to be closely tailored ...





Contact Us

For inquiries, pricing, or partnerships:

<https://sccd-sk.eu>

Phone: +32 2 808 71 94

Email: info@sccd-sk.eu

Scan QR code for WhatsApp.

