



Can solar inverters be used for wind energy

Our Lifepo4 batteries can be connected in parallels and in series for larger capacity and voltage.





Overview

A combination of solar and wind energy is being used for many applications. One such application is connecting wind turbines to solar inverters. Can I Connect A Wind Turbine To My Solar Inverter?

Yes. You can connect the solar panel system and wind turbine with the help of a.

A combination of solar and wind energy is being used for many applications. One such application is connecting wind turbines to solar inverters. Can I Connect A Wind Turbine To My Solar Inverter?

Yes. You can connect the solar panel system and wind turbine with the help of a.

A solar inverter is a machine that changes the current generated by photovoltaic cells into an alternating current. This energy is used for various applications. This is because the energy from sunlight has to be converted to another form before it can be used by humans. Therefore solar energy.

Wind turbines play a vital role in the renewable energy sector, with a focus on improving power generation efficiency and stability. In practical applications, the supporting equipment, including the inverter, holds significant importance. As a key component of wind turbines, the inverter's.

Solar inverters play a crucial role in converting direct current (DC) electricity produced by solar panels into alternating current (AC) electricity suitable for use in homes and businesses. On the other hand, wind turbines are designed to capture the kinetic energy of wind and convert it into.

How to Connect a Wind Turbine to a Solar Inverter?

The inverter is a key device that converts direct current from solar or wind power into alternating current. If you want to connect wind modules and photovoltaic modules to the same inverter, you need to choose an inverter that meets the following.

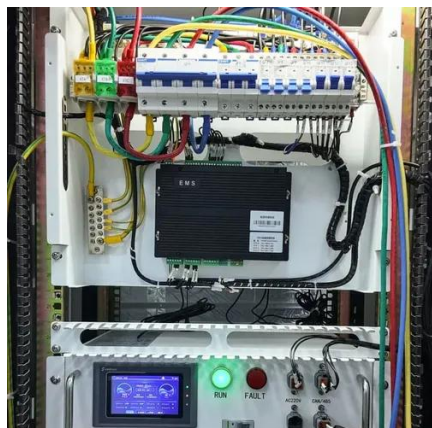
In the quest for renewable energy solutions, the hybrid inverter for solar and wind systems has emerged as a powerful tool for maximizing energy generation.



Combining the strengths of both solar and wind energy, this innovative technology allows homeowners and businesses to harness multiple sources.



Can solar inverters be used for wind energy



Can I Connect a Wind Turbine to My Solar Inverter? - ECGSOLAX

In conclusion, while directly connecting a wind turbine to a solar inverter may pose challenges, the integration of wind and solar power is indeed possible through the use of ...

How to Connect Wind Turbines and Solar Panels

Yes, wind and solar power can be combined into a hybrid energy system. To combine wind and solar power, connect the wind generator to the solar panel battery inverter. If the inverter does ...



Can a Grid-Tied Solar PV Inverter be used with a ...

No. Grid-Tied solar inverters cannot be used directly with wind turbines. Solar inverters are different from wind turbine inverters.

Connect Wind Turbine to Solar Inverter: Essentials ...

One such application is connecting wind turbines to solar inverters. Can I Connect A Wind Turbine To My Solar Inverter? Yes. You ...



How to Connect a Wind Turbine to a Solar

There's a key requirement to keep in mind: you'll need a hybrid solar inverter, often referred to as a wind-solar inverter. This type of ...

Connect Wind Turbine to Solar Inverter: Essentials

One such application is connecting wind turbines to solar inverters. Can I Connect A Wind Turbine To My Solar Inverter? Yes. You can connect the solar panel system and wind ...



Can wind turbines use solar inverters?

The analysis highlights clear technical differences between wind turbine inverters and solar inverters. Consequently, using solar ...





How to Connect Wind Turbines and Solar Panels

Yes, wind and solar power can be combined into a hybrid energy system. To combine wind and solar power, connect the wind generator to the solar ...



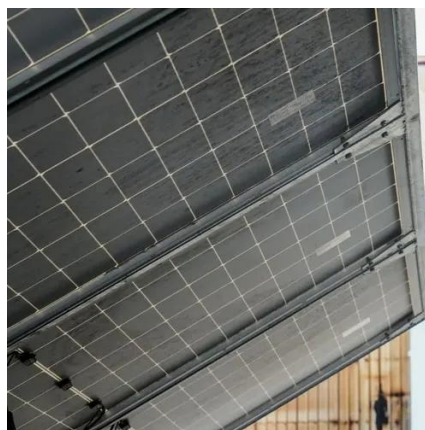
Wind Turbine & Solar Panel Combinations: A Guide to Hybrid ...

Installing a feed inverter with your grid-tied system also allows many customers to effectively supply power back to the grid. This is called net metering, and it uses a bidirectional ...



Understanding the Hybrid Inverter for Solar and Wind: A Path to

A hybrid inverter for solar and wind can maximize energy usage by drawing from the most efficient source at any given time. For instance, on sunny days with high solar output, ...



Can a Grid-Tied Solar PV Inverter be used with a Wind Turbine?

No. Grid-Tied solar inverters cannot be used directly with wind turbines. Solar inverters are different from wind turbine inverters.



Can I Connect a Wind Turbine to My Solar ...

In conclusion, while directly connecting a wind turbine to a solar inverter may pose challenges, the integration of wind and solar ...

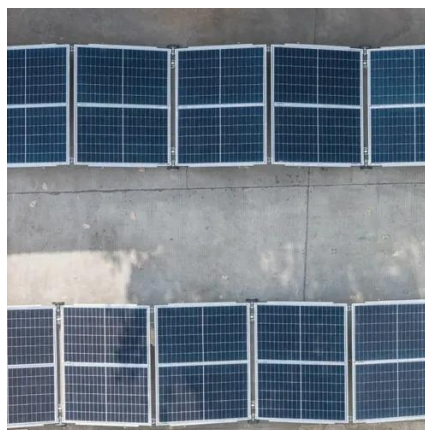


Wind Turbines And Solar Panels: Hybrid Energy Systems

Solar and wind energy make a natural pairing and can ensure that a hybrid renewable energy system is producing more electricity during more hours of the year. Why do ...

Connecting wind turbine to solar inverter

Solar inverters are designed to handle specific voltage and frequency requirements, which may differ from those of wind turbines. As a result, integrating a wind turbine directly into a ...



Wind Turbines And Solar Panels: Hybrid Energy ...

Solar and wind energy make a natural pairing and can ensure that a hybrid renewable energy system is producing more electricity ...



Can wind turbines use solar inverters?

The analysis highlights clear technical differences between wind turbine inverters and solar inverters. Consequently, using solar inverters directly for wind turbines can lead to ...



How to Connect a Wind Turbine to a Solar Inverter?

There's a key requirement to keep in mind: you'll need a hybrid solar inverter, often referred to as a wind-solar inverter. This type of inverter is specifically designed to handle ...



Contact Us

For inquiries, pricing, or partnerships:

<https://sccd-sk.eu>

Phone: +32 2 808 71 94

Email: info@sccd-sk.eu

Scan QR code for WhatsApp.

