



Cement Plant Folding Container Hybrid Type





Overview

These mobile mixing solutions bring industrial-grade cement production directly to remote mining sites, tunneling operations, and infrastructure projects where traditional stationary plants would be impractical or impossible to deploy.

These mobile mixing solutions bring industrial-grade cement production directly to remote mining sites, tunneling operations, and infrastructure projects where traditional stationary plants would be impractical or impossible to deploy.

Here you can see different views, variants and the essential elements of our OCTAPLANT®. Over the past 20 years, shipping of clinker and cement has steadily increased, driven by booming construction in developing regions. As urbanization increases in such markets, mobility, speed and responsiveness.

They are the most ergonomic and easily transportable batching plants made by PROTEM, offering one of the highest productivity and aggregates storage capacities in the market. Each plant is delivered in 5 container sized modules, transported in the same way as standard containers minimizing all.

The LPC stationary modular concrete batch plant provides for custom design along with lower shipping costs. This plant fits conveniently inside shipping containers. With a large selection of plants ranging from decumulative to accumulative and dry to wet batch, the LPC plant provides the options.

Concrete batch plants are mobile or stationary plants that are employed to measure and mix the concrete ingredients uniformly in the construction industry. Their basic purpose is to yield a high-quality and uniform mix in each batch in the shortest possible time, and with reduced cost. A concrete.

Container type cement and water mixing plant cases: Tunneling/Mining: Grouting for ground stabilization or backfilling. Infrastructure Repair: Concrete production for bridges, roads, or dam. Disaster Response: Rapid deployment for temporary housing or emergency repairs. Soil Stabilization: Mixing.

EP's HZS180X container concrete batching plant is a convenient mixing plant that integrates concrete production equipment in a container. Unlike the traditional fixed mixing plant, it adopts a modular design, and through the containerized



configuration, the entire mixing plant system can be easily.



Cement Plant Folding Container Hybrid Type

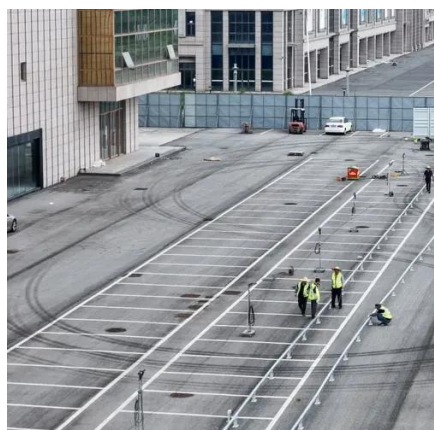


[HS Series , Starter Mobile Batch Plant , 40-110 YD³/H](#)

This plant features a single or dual scale decumulative aggregate batcher, 400 BBL of cementitious storage, 12 yard in-truss cement batcher, and all of the other features of the HT ...

[OCTAPLANT® - Prefabricated Portable Cement Packing Plants](#)

Here you can see different views, variants and the essential elements of our OCTAPLANT®. Over the past 20 years, shipping of clinker and cement has steadily increased, driven by booming ...



Mobicom 30 , Small Mobile Concrete Batching Plant , Constmach

The plant can be shipped by a truck between the jobsites easily. To ensure easy mobility, MOBICOM concrete plants remain at ...

Mobicom 30 , Small Mobile Concrete Batching Plant , Constmach

The plant can be shipped by a truck between the jobsites easily. To ensure easy mobility, MOBICOM concrete plants remain at the same position



during both production and transport.



[HZS180X Container Concrete Batching Plant](#)

EP's HZS180X container concrete batching plant with modular design provides efficient and flexible concrete production solutions for ...

Concrete Batching Plant

Container-type or compact concrete batching plants offer a hybrid solution that combines the modularity and fast setup of mobile plants with the performance and capacity of smaller ...



[HZS180X Container Concrete Batching Plant](#)

EP's HZS180X container concrete batching plant with modular design provides efficient and flexible concrete production solutions for construction scenarios. Its compact layout and small ...





Mobile Portable Concrete Batching Plants

Stationary, mobile, and compact plants--plus cement silos, feeders, and dosing units. Every system is customizable to match your space, capacity, and automation needs.



OCTAPLANT® - Prefabricated Portable Cement ...

Here you can see different views, variants and the essential elements of our OCTAPLANT®. Over the past 20 years, shipping of clinker and cement ...

Container type cement and water mixing plant

A container type cement and water mixing plant is a mobile, self-contained system designed for producing cementitious mixtures (e.g., mortar, grout, or specialized concrete) by ...



Containerized Type Concrete Batching Plants

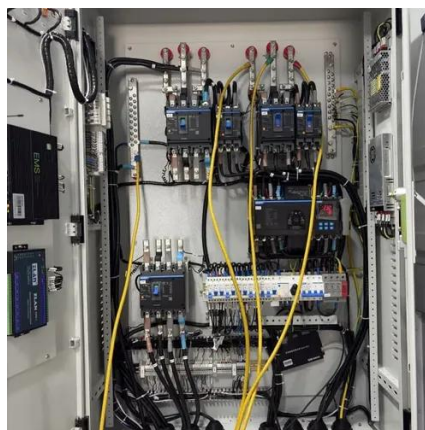
Each plant is delivered in 5 container sized modules, transported in the same way as standard containers minimizing all other costs incurred by the buyer such as transportation, storage, ...





Portable Cement Plant: Mobile Mixing Solutions

A portable cement plant represents a complete cement mixing system designed for easy transport and rapid deployment. Unlike permanent facilities, these plants are built on skid-mounted or ...



Containerized Batch Plants , Fits Inside Shipping ...

The LPC stationary modular concrete batch plant offers custom design and lower shipping costs. It can fit inside shipping containers and has a wide ...

Container type cement and water mixing plant

A container type cement and water mixing plant is a ...



Containerized Batch Plants , Fits Inside Shipping Container

The LPC stationary modular concrete batch plant offers custom design and lower shipping costs. It can fit inside shipping containers and has a wide selection of plant features to meet ...



Contact Us

For inquiries, pricing, or partnerships:

<https://sccd-sk.eu>

Phone: +32 2 808 71 94

Email: info@sccd-sk.eu

Scan QR code for WhatsApp.

