



# Circuit breaker in substation in Niger





## Overview

---

This article provides an in-depth exploration of how circuit breakers function in substations, covering their types, components, operation, and significance, supplemented with examples for clarity.

This article provides an in-depth exploration of how circuit breakers function in substations, covering their types, components, operation, and significance, supplemented with examples for clarity.

INSTALLATION OF NEW 33KV CURRENT TRANSFORMER AND CIRCUIT BREAKER AT SULEJA TRANSMISSION SUBSTATION, NIGER STATE. more Follow along using the transcript.

Project Details: Supply and Installation of 145kV, 3150A, 40kA, 31 mm/kV SF6 Livetank HV Circuit Breakers - Outdoor type Model GL312F1. The upgrade of the ZINDER II Substations in Niger incorporated the installation of advanced SF6 live tank high voltage circuit breakers, specifically designed for.

wheeling power from power plants into the National Grid. The latter interconnects a the Power Stations, Substations and Transmission line inal voltage at the power station is mostly 11kV or 16kV. This is fed into a step - up power transformer at the power station site, to give an output of 330kV.

The Transmission Company of Nigeria (TCN) is set to install a new 33KV current transformer in Suleja Transmission Substation, Niger. TCN's General Manager, Public Affairs, Mrs Ndidi Mbah, said in a statement in Abuja that the installation would also include a Circuit Breaker on its 30MVA, 132/33kV.

Circuit breakers are essential components in electrical substations, serving as protective devices that ensure the stability, safety, and reliability of the power system. They are designed to automatically interrupt the flow of electricity during fault conditions, preventing damage to equipment.

At the heart of this reliability are substation circuit breakers, vital components that ensure the safe and efficient operation of electrical substations. These devices protect electrical grids from overloads, faults, and unexpected disruptions, preventing power outages and equipment damage. Swartz.



## Circuit breaker in substation in Niger

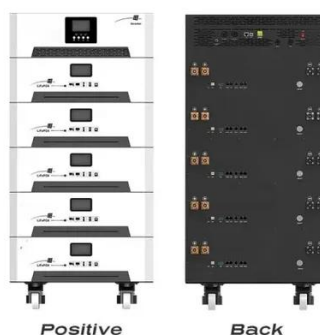


### Installation of new 33kV current transformer and circuit breaker on

Installation of new 33kV current transformer and circuit breaker on 30MVA power transformer by TCN engineers at Suleja Transmission Substation, Niger State

### TCN To Install New Current Transformer, Circuit Breaker In ...

The Transmission Company of Nigeria (TCN) has hereby stated that it will install a brand new 33kV Current Transformer and Circuit Breaker on its 30MVA 132/33kV power ...



### TCN installs new transformer, circuit breaker in Suleja substation

The Transmission Company of Nigeria (TCN) is set to install a new 33KV current transformer in Suleja Transmission Substation, Niger. Mrs Ndidi Mbah, TCN's General ...

### VOLTAK Electric Limited

The upgrade of the ZINDER II Substations in Niger incorporated the installation of advanced SF6 live tank high voltage circuit breakers, ...



## INSTALLATION OF NEW 33kV CURRENT TRANSFORMER ...

INSTALLATION OF NEW 33kV CURRENT TRANSFORMER AND CIRCUIT BREAKER AT SULEJA TRANSMISSION SUBSTATION, NIGER STATE  
Transcript



## How Circuit Breaker Works in Substation?

Learn about circuit breakers in substations, their types, operation, and role in power safety.



## Substation Circuit Breakers: Ensuring Power ...

Ensure reliable power distribution with Substation Circuit Breakers by Swartz Engineering. Discover their role in safety, efficiency, ...





## Power Transformation Projects (330/132/33 kV Substations)

Breaker at a Substation Power Transformation  
Substations Three types of substations are being  
built all over the country: Air Insulated Switchgear  
(AI. ), Gas Insulated Switchgear (GIS) and ...

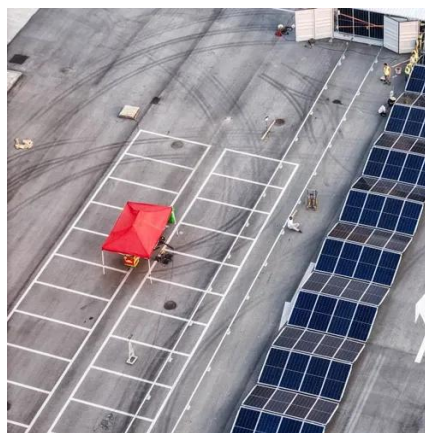


## Substation Circuit Breakers: Ensuring Power Distribution

Ensure reliable power distribution with Substation  
Circuit Breakers by Swartz Engineering. Discover  
their role in safety, efficiency, and grid stability.

## **INSTALLATION OF NEW 33kV CURRENT TRANSFORMER AND CIRCUIT BREAKER ...**

INSTALLATION OF NEW 33kV CURRENT  
TRANSFORMER AND CIRCUIT BREAKER AT SULEJA  
TRANSMISSION SUBSTATION, NIGER STATE  
Transcript



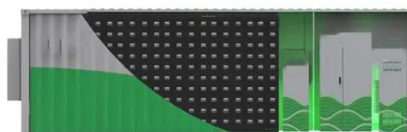
## **VOLTAK Electric Limited**

The upgrade of the ZINDER II Substations in Niger  
incorporated the installation of advanced SF6 live  
tank high voltage circuit breakers, specifically  
designed for outdoor environments.



## TCN to install new transformer, circuit breaker in Suleja substations

By EZEKIEL OBI, Abuja - The Transmission Company of Nigeria (TCN) is set to install a new 33KV current transformer in Suleja Transmission Substation, Niger. TCN's ...



### Newsdiaryonline

The Transmission Company of Nigeria (TCN) is set to install a new 33KV current transformer in Suleja Transmission Substation, Niger. Mrs Ndidi Mbah, TCN's General Manager, Public ...



## Contact Us

---

For inquiries, pricing, or partnerships:

<https://sccd-sk.eu>

Phone: +32 2 808 71 94

Email: [info@sccd-sk.eu](mailto:info@sccd-sk.eu)

Scan QR code for WhatsApp.

