



Classification of base stations in trunking communication systems





Overview

Local systems with one base station only and (cellular) systems covering larger areas are in use. Base stations often are equipped also to connect to the fixed network.

Local systems with one base station only and (cellular) systems covering larger areas are in use. Base stations often are equipped also to connect to the fixed network.

A trunked radio system (TRS) is a two-way radio system that uses a control channel to automatically assign frequency channels to groups of user radios. In a traditional half-duplex land mobile radio system a group of users (a talkgroup) with mobile and portable two-way radios communicate over a.

Designed for wireless mobile communication, TETRA (Terrestrial Trunked Radio) is a robust system widely used in mission-critical operations, offering reliable and secure communication across vast areas. This tutorial delves into the core components and functionalities of the TETRA radio system.

A trunked radio system is a specialized repeater system with one or more towers, and multiple frequencies, which allows channelized, semi-private conversations between many more groups of users than it actually has allocated RF channels; this is an example of statistical multiplexing. There are.

A base station is a component that provides functionality as a gateway for any wireless device to communicate or access the network within a particular area. It provides connectivity between devices to devices or devices to network for network accessibility in all the available devices efficiently.

With an all-IP architecture and centralized networking, the solution utilizes infrastructure with modular design of system components in order to deliver high spectrum efficiency, fast access, advanced Security, wide coverage, flexible networking, affordable infrastructure and low maintenance costs.

In a local range defined by the base station, voice and data radio is offered on half-duplex channels between one or many mobile users and a central dispatcher. Local systems with one base station only and (cellular) systems covering larger areas are



in use. Base stations often are equipped also to.



Classification of base stations in trunking communication systems



Principles of operation

"Trunked" radio systems differ from "conventional" radio systems in that a conventional radio system uses a dedicated channel (frequency) for each individual group of users, while ...

[EEnG473 Mobile Communications Module 2 : Week # \(7\)](#)

In a trunked radio system, each user is allocated a channel on a per call basis, and upon termination of the call, the previously occupied channel is immediately returned to the pool of ...



Base station

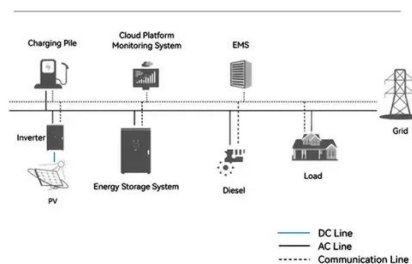
Base station (or base radio station, BS) is - according to the International Telecommunication Union 's (ITU) Radio Regulations (RR) [1] - a " land station in the land mobile service." A base ...

Trunked Radio Systems

A trunked radio system is a specialized repeater system with one or more towers, and multiple frequencies, which allows channelized, semi-private conversations between many ...



System Topology



Trunked Radio Systems

In this article, we will discuss the different types of base stations with their advantages and applications in the real world. A base station is a component that provides ...

Types of Base Stations

In this article, we will discuss the different types of base stations with their advantages and applications in the real world. A base station is a component that provides ...



DMR Tier-III Trunking

As the core of Hytera DMR Trunking Pro, the MSO comprises a wide array of subsystems to enrich the application functionality, such as Network Management System (NMS), Dispatching ...





Base Station System Structure

It describes the structure of base station systems with a convergent top-down and bottom-up framework. The BSWG has now moved beyond detailed consideration of these specific ...



[TETRA Radio System Tutorial: Trunking, Frame, Frequency](#)

In this TETRA Radio System Tutorial, we've explored the key aspects of TETRA, including its trunking mechanisms, frame structure, frequency allocation, and network architecture.

Trunking Networks

Local systems with one base station only and (cellular) systems covering larger areas are in use. Base stations often are equipped also to connect ...



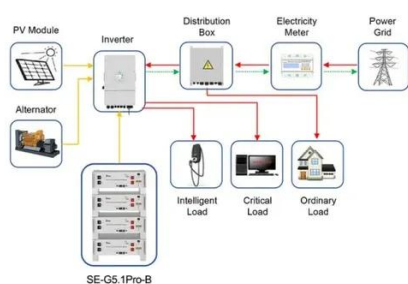
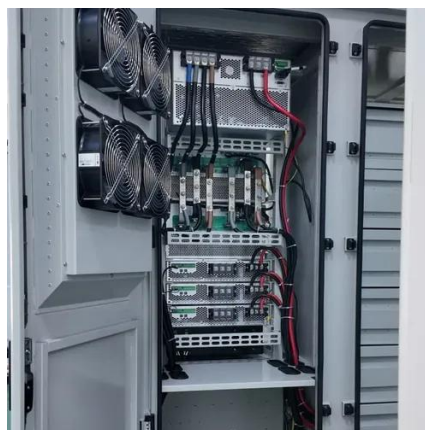
[TETRA Radio System Tutorial: Trunking, Frame, ...](#)

In this TETRA Radio System Tutorial, we've explored the key aspects of TETRA, including its trunking mechanisms, frame structure, frequency ...



Trunked radio system

'Trunked' radio systems differ from 'conventional' radio systems in that a conventional radio system uses a dedicated channel (frequency) for each individual group of users, while ...



Application scenarios of energy storage battery products

Trunking Networks

Local systems with one base station only and (cellular) systems covering larger areas are in use. Base stations often are equipped also to connect to the fixed network.



Contact Us

For inquiries, pricing, or partnerships:

<https://sccd-sk.eu>

Phone: +32 2 808 71 94

Email: info@sccd-sk.eu

Scan QR code for WhatsApp.

