



Commercial solar panel size standards





Overview

Commercial solar panels are specially built around 72-cell modules and larger cells with higher wattages and broader surface mounts. The standard size of a commercial solar panel is usually about 2000 mm × 1000 mm; it has a wattage of 400 – 450.

Commercial solar panels are specially built around 72-cell modules and larger cells with higher wattages and broader surface mounts. The standard size of a commercial solar panel is usually about 2000 mm × 1000 mm; it has a wattage of 400 – 450.

These panels come in a standard size, which is approximately 1650 x 990 mm (65 x 39 inches). They are smaller in size and lighter in weight compared to commercial solar panels. Their compactness makes them easy to install and maintain. They are generally installed on the rooftops of the houses.

Commercial solar panels typically measure approximately 77 inches by 39 inches, but the size can vary depending on the specific model and manufacturer. They are typically larger than residential solar panels, which allows them to generate more electricity. However, size may vary depending on the.

Standard Residential Panels Optimize Space and Handling: The industry-standard 60-cell panel dimensions (65" × 39" × 1.5") aren't arbitrary – they represent the optimal balance between power output, installation ease, and roof space utilization. At 40-46 pounds, they can be safely handled by.

When planning to install large scale commercial or industrial solar power plants typically ranging from 150 kW to 5 M, selecting the right solar panel size, dimensions & wattage is most important. Accurate planning ensures efficient use of space, optimal energy output, structural compatibility &.

The standard solar panel size typically contains either 60 or 72 cells. You can also find panels with as few as 32 solar cells on recreational vehicles, as well as some larger commercial panels with as many as 96 cells. As for the actual footprint of the assembled panel, there are two key factors.

When it comes to converting your factory to run on green energy, understanding



the size and capacity of commercial solar panels is essential. These panels come in various dimensions, each designed to optimize energy generation while accommodating the unique spatial constraints of industrial.



Commercial solar panel size standards

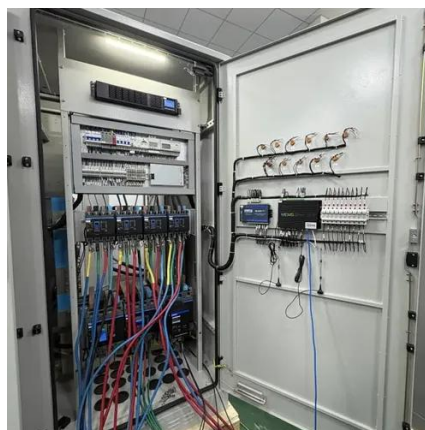


What Is a Standard Commercial Solar Panel Size?

Commercial solar panels are generally larger than residential panels due to the need for higher energy output in commercial settings. The most common dimensions for a ...

Solar Panel Sizes, Dimensions & Wattage for ...

Find the ideal solar panel size and wattage for your business--maximize efficiency and space with our easy size guide.



Solar Panels Size & Weight (Including Commercial Dimensions)

Commercial solar panels typically include 72 solar cells and measure up to 6 feet wide (78 inches long by 39 ...

Solar Panel Sizes, Dimensions & Wattage for Businesses , GSE

Find the ideal solar panel size and wattage for your business--maximize efficiency and space with our easy size guide.



Commercial Solar Panel Sizes: An In-Depth Guide to Picking the Right

Discover your perfect fit with our in-depth guide on commercial solar panel sizes. Make informed decisions for ...

[Solar System Sizing Guide for Businesses](#)

Learn how to properly size a solar system for your business to maximize efficiency, savings, and sustainability.



[Standard Solar Panel Sizes And Wattages \(100W-500W ...](#)

That's a 77×39 solar panel; basically, a longer panel, mostly used for commercial solar systems. 96-cell solar panel size. The dimensions of 96-cell solar panels are as follows: 41.5 inches ...



Solar System Sizing Guide for Businesses

Learn how to properly size a solar system for your business to maximize efficiency, savings, and sustainability.



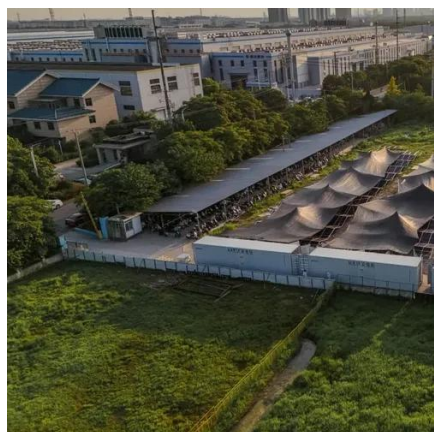
Commercial Solar Panel Sizes and Wattage: What Businesses ...

The average commercial solar panel in 2025 measures about 2.1 meters long by 1.1 meters wide, but here's the kicker: newer M10 and G12 models are pushing sizes while slimming down ...



Solar Panels Size & Weight (Including Commercial Dimensions)

Commercial solar panels typically include 72 solar cells and measure up to 6 feet wide (78 inches long by 39 inches wide). As with residential solar panels, commercial models ...



What Is a Standard Commercial Solar Panel Size?

Commercial solar panels are generally larger than residential panels due to the need for higher energy output in commercial settings. ...



Commercial Solar Panel Sizes: An In-Depth Guide to Picking the ...

Discover your perfect fit with our in-depth guide on commercial solar panel sizes. Make informed decisions for your business's eco-friendly shift.



[Solar Panel Size: 2026 Detailed Guide](#)

Commercial solar panels are designed for large-scale energy production for factories, solar parks, institutions, and other businesses. Typically, a commercial solar panel is ...

[Solar Panel Size & Dimensions Guide 2025](#) [. Complete Specs](#)

Complete guide to solar panel sizes and dimensions. Compare 60-cell vs 72-cell panels, weights, roof space requirements, and installation specs for 2025.



[Size of Solar Panels Explained: Residential and ...](#)

Knowing about the size and solar panel weight is necessary to install effectively and it's performance. Here we explain them in detail.





Size of Solar Panels Explained: Residential and Commercial Standards

Knowing about the size and solar panel weight is necessary to install effectively and it's performance. Here we explain them in detail.



[Standard Solar Panel Sizes And Wattages \(100W ...](#)

That's a 77×39 solar panel; basically, a longer panel, mostly used for commercial solar systems. 96-cell solar panel size. The dimensions of 96 ...



Contact Us

For inquiries, pricing, or partnerships:

<https://sccd-sk.eu>

Phone: +32 2 808 71 94

Email: info@sccd-sk.eu

Scan QR code for WhatsApp.

