



Communication mobile base station equipment installation plan





Overview

Installing a Base Transceiver Station (BTS) is a critical step in building mobile communication networks. Here's a step-by-step guide to the process: 1. Site Acquisition and Survey Objective: Select and acquire a suitable location for the BTS. Activities: Identify.

Installing a Base Transceiver Station (BTS) is a critical step in building mobile communication networks. Here's a step-by-step guide to the process: 1. Site Acquisition and Survey Objective: Select and acquire a suitable location for the BTS. Activities: Identify.

Installing a Base Transceiver Station (BTS) is a critical step in building mobile communication networks. Here's a step-by-step guide to the process: 1. Site Acquisition and Survey Objective: Select and acquire a suitable location for the BTS. Activities: Identify coverage gaps or expansion areas.

Order and procure necessary materials and equipment, including towers, antennas, base transceiver stations (BTS), and other essential hardware. Arrange logistics for equipment delivery, warehousing, and on-site storage. An example of a pelican case with equipment safely stored for transport 3.

Outdoor base stations integrate all essential systems into a single Integrated Cabinet, designed to endure harsh conditions like direct sunlight, rain, and extreme temperatures. These units protect the equipment while ensuring efficient functionality. Towers are crucial for mounting antennas at.

This chapter provides requirements and recommendations for designing communications site buildings, including equipment shelters and outdoor cabinets. The following topics are discussed: The list below describes typical configurations that could comprise a communications equipment site. See Chapter.

Global System for Mobile Communications (GSM) has been a cornerstone of mobile communication since its inception. To successfully implement and maintain a GSM network, careful planning and design are crucial. This guide will walk you through the essential elements of GSM network planning and.

SOLUTIONS, LLC's PROVISION OF THE MATERIALS. USE OF THE INFORMATION,



DRAWINGS, INSTRUCTIONS, AND OTHER MATERIALS IS AT YOUR OWN RISK AND YOU ARE SOLELY RESPONSIBLE FOR THE IMPLEMENTATION, INSTALLATION, ANALYSIS AND CERTIFICATION OF THE WIRELESS SYSTEMS SOLUTIONS, LLC SYSTEM IN ACCORDANCE WITH.



Communication mobile base station equipment installation plan



Planning, Constructing, and Commissioning a ...

Install coaxial, fiber optic, and power cables to connect antennas, base stations, and other equipment. Ensure proper cable management and ...

Base Station Installation & Maintenance Test Solutions

To ensure stable communication between a base station and connect with the stability of mobile devices, it is necessary to check radio communication performance and eliminate radio wave ...



Process of Installing a Base Transceiver Station (BTS)

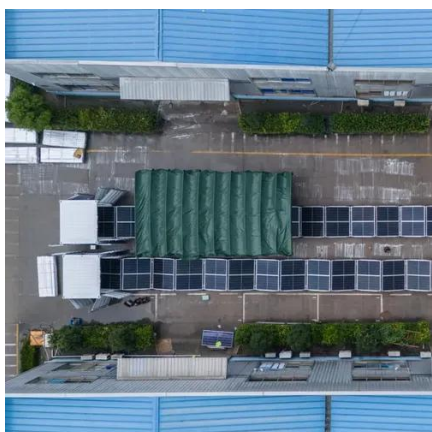
Installing a Base Transceiver Station (BTS) is a critical step in building mobile communication networks. Here's a step-by-step guide to the process:

Construction Procedures and Standards of Cellular Mobile ...

4.12.2.1 The Licensee undertaking the Cellular Mobile Base Station and Tower construction shall ensure that appropriate and adequate safety



equipment is easily available at a Site at all times
...



[GSM Network Planning and Design: A Complete ...](#)

To successfully implement and maintain a GSM network, careful planning and design are crucial. This guide will walk you through ...

[WSS 4G System Base-Station Installation Manual](#)

Upon completion of all installation work, it is recommended that a final verification is performed to ensure that all components have been installed, mounted and secured correctly and that all ...



Base Stations

Backhaul Connection: The backhaul connection links the base station to the core network in the mobile communication system. It ...



[Process of Installing a Base Transceiver Station ...](#)

Installing a Base Transceiver Station (BTS) is a critical step in building mobile communication networks. Here's a step-by-step guide to ...

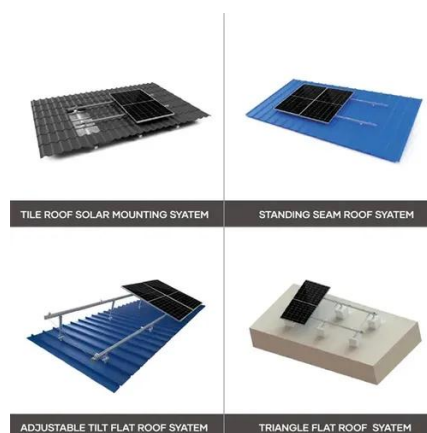


Complete Guide to 5G Base Station Construction , Key Steps, Equipment

Explore how 5G base stations are built--from site planning and cabinet installation to power systems and cooling solutions. Learn the essential components, technologies, and ...

[GSM Network Planning and Design: A Complete Guide](#)

To successfully implement and maintain a GSM network, careful planning and design are crucial. This guide will walk you through the essential elements of GSM network ...



How to Set Up a Base Station CB System: A Complete Installation ...

Setting up a base station CB system opens a world of communication possibilities far beyond what mobile installations offer. With careful planning, quality components, and ...



[Complete Guide to 5G Base Station Construction](#)

Explore how 5G base stations are built--from site planning and cabinet installation to power systems and cooling solutions. Learn the ...

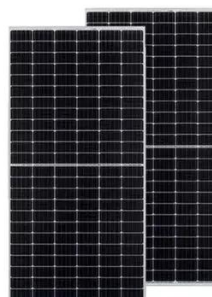


Base Stations

Backhaul Connection: The backhaul connection links the base station to the core network in the mobile communication system. It provides for the interchange of data between ...

[How to Set Up a Base Station CB System: A ...](#)

Setting up a base station CB system opens a world of communication possibilities far beyond what mobile installations offer. ...



Planning, Constructing, and Commissioning a Mobile Network Site

Install coaxial, fiber optic, and power cables to connect antennas, base stations, and other equipment. Ensure proper cable management and secure all cabling to prevent wear and ...



COMMUNICATION SITE BUILDING DESIGN AND ...

This chapter provides requirements and recommendations for designing communications site buildings, including equipment shelters and outdoor cabinets. The following topics are ...





Contact Us

For inquiries, pricing, or partnerships:

<https://sccd-sk.eu>

Phone: +32 2 808 71 94

Email: info@sccd-sk.eu

Scan QR code for WhatsApp.

