



# Communication room and wireless base station





## Overview

---

A base station, also known as a cell site or cell tower, is used for wireless communication. It is a fixed location equipped with antennas and other equipment that receives and transmits radio signals to and from mobile devices, such as smartphones, tablets, and other wireless devices.

A base station, also known as a cell site or cell tower, is used for wireless communication. It is a fixed location equipped with antennas and other equipment that receives and transmits radio signals to and from mobile devices, such as smartphones, tablets, and other wireless devices.

Base station (or base radio station, BS) is – according to the International Telecommunication Union 's (ITU) Radio Regulations (RR) [1] – a " land station in the land mobile service." A base station is called node B in 3G, eNB in LTE (4G), and gNB in 5G. The term is used in the context of mobile.

A base station plays a pivotal role in the realm of telecommunications, acting as the cornerstone of connectivity. It enables seamless communication by linking various wireless devices to broader networks, ensuring that data flows efficiently from one point to another. A base station is an integral.

A base station represents an access point for a wireless device to communicate within its coverage area. It usually connects the device to other networks or devices through a dedicated high bandwidth wire of fiber optic connection. Base stations typically have a transceiver, capable of sending and.

Base stations are critical components in wireless communication networks, serving as the intermediary between mobile devices and the core network. They play a vital role in ensuring seamless connectivity, efficient data transmission, and reliable communication services. This blog explores the.

A base station is a fixed communication infrastructure that connects mobile devices (such as smartphones, tablets, or IoT devices) to a network, enabling wireless communication. It acts as the intermediary between the mobile device and the broader telecommunications network, facilitating both data.

A base station is a critical component of wireless communication networks. It



serves as the central point of a network that connects various devices, such as smartphones, tablets, and computers. The base station transmits and receives signals, ensuring seamless communication over radio frequencies.



## Communication room and wireless base station

---

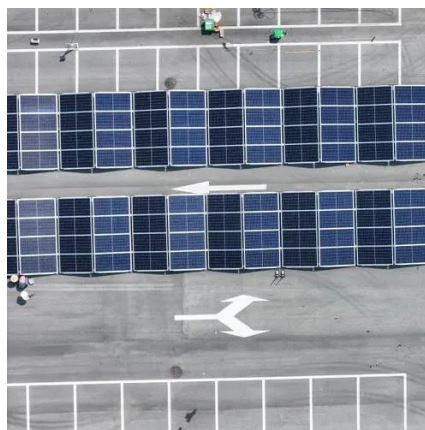


### What Is the Role of a Base Station in Wireless Communication?

Base stations are critical components in wireless communication networks, serving as the intermediary between mobile devices and the core network. They play a vital role in ...

### What is a Base Station? -- From Communication Core to ...

Simply put, a base station (BS) is a wireless transceiver device in a mobile communication network that provides wireless coverage and communicates with mobile ...

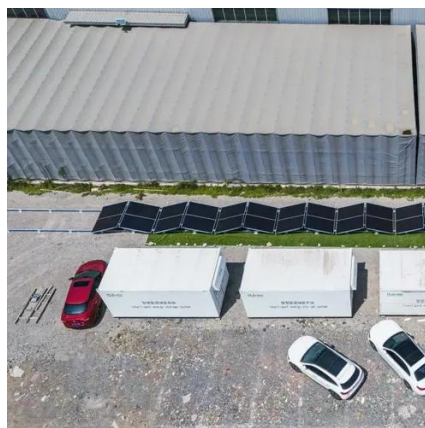


### Base Stations

Base stations form a key part of modern wireless communication networks because they offer some crucial advantages, such as wide coverage, continuous communications and ...

### Base station

In the area of wireless computer networking, a base station is a radio receiver/transmitter that serves as the hub of the local wireless network, and may also be the gateway between a wired ...



## Understanding Base Stations: The Backbone of Wireless Communication

A base station is a fixed communication infrastructure that connects mobile devices (such as smartphones, tablets, or IoT devices) to a network, enabling wireless communication.



### What Is Base Station In Wireless Communication?

Also known as a cell site, base transceiver station (BTS), or Node B, the base station plays a vital role in providing wireless connectivity to mobile devices, laptops, and other ...



### What is a base station?

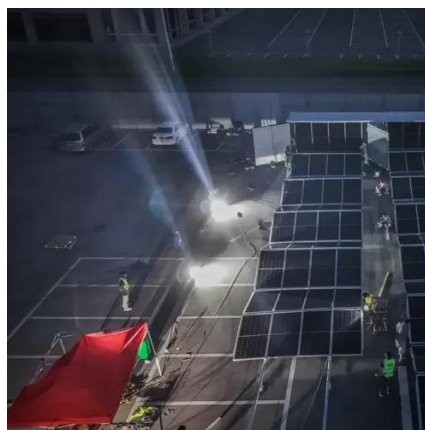
In telecommunications, a base station is a fixed transceiver that is the main communication point for one or more wireless mobile client devices. A base station serves as ...





## Base Station's Role in Wireless Communication Networks

Yes, base stations can be used in remote areas to provide wireless communication services. In these areas, deployable solutions like satellite-linked base stations or solar-powered units ...



## **What Is A Base Station?**

A base station, also known as a cell site or cell tower, is used for wireless communication. It is a fixed location equipped with antennas and other equipment that ...



## Base Station's Role in Wireless Communication Networks

Yes, base stations can be used in remote areas to provide wireless communication services. In these areas, deployable solutions like satellite-linked base stations ...



## **Base Stations**

Base stations form a key part of modern wireless communication networks because they offer some crucial advantages, ...





## Understanding Base Stations: The Backbone of Wireless ...

A base station is a fixed communication infrastructure that connects mobile devices (such as smartphones, tablets, or IoT devices) to a network, enabling wireless communication.



## The Base Station in Wireless Communications: The Key to ...

Mobile network operators invested billions of dollars in the development and modernization of infrastructure, building new telecommunications towers, developing fiber ...



## Contact Us

---

For inquiries, pricing, or partnerships:

<https://sccd-sk.eu>

Phone: +32 2 808 71 94

Email: [info@sccd-sk.eu](mailto:info@sccd-sk.eu)

Scan QR code for WhatsApp.

