



# Compact power station factory in Melbourne





## Overview

---

Three new mini-hydro power stations will be built and commissioned at St Albans, O'Shannassy and Upper Yarra Reservoirs. Did you find what you were looking for?

Learn more about hydropower generation and how it benefits Melbourne.

Three new mini-hydro power stations will be built and commissioned at St Albans, O'Shannassy and Upper Yarra Reservoirs. Did you find what you were looking for?

Learn more about hydropower generation and how it benefits Melbourne.

The AT series Medium Voltage heavy-duty substation for outdoor installation is a free standing, containerised unit, specifically designed for harsh environments. The substation is provided with MV switchboard, transformer and LV switchboard, designed to comply with local regulations and customer.

The following page lists all active and former power stations in Victoria, Australia. Power stations smaller than 1 MW in nameplate capacity are not listed. Loy Yang is the largest power station by capacity in Victoria. These fossil fuel power stations burn coal to generate some or all of the.

Our story began more than nine decades ago when Jack Wilson arrived in Australia from the UK to work as a transformer electrical design engineer at a small factory in South Melbourne. A few years later, in July 1933, Jack started his own business under the name of Wilson Electrical Products with a.

Newport is an intermediate load plant located on the west bank of the Yarra River, approximately 6km south-west of Melbourne in the suburb of Newport. It uses natural gas to generate steam in a boiler which supplies a three-stage steam turbine coupled to a generator to produce up to 510 MW of.

Established in the 1960s, our site at Lilydale, Victoria has been manufacturing power quality solutions for over 60 years. Hitachi Energy's product development is very much driven by the UN's sustainable development goals. At the Australian site, we design and manufacture technologies for power.

Our new Campbellfield facility in Victoria serves as the central hub for



manufacturing and administration, supporting our operations across Australia and New Zealand. Located in Melbourne's M80 development, this facility holds a 5-Star Green Star rating and features rooftop solar power. At this.



## Compact power station factory in Melbourne

---



### Hydropower

Six mini hydroelectric power stations were built throughout the water supply network. In 2010, an energy recovery hydroelectric power station was installed on the outlet of the North-South ...

### Clayton Power Station: Landfill Gas to Electricity in Victoria

EDL's Clayton Power Station occupies the former sand quarries at Clayton in Victoria. Read more and download the project fact sheet for more information.



### [Our Company , Wilson Transformer Company](#)

Our story began more than nine decades ago when Jack Wilson arrived in Australia from the UK to work as a transformer electrical design engineer at a small factory in South Melbourne.

### [List of power stations in Victoria \(state\)](#)

List of power stations in Victoria (state) The following page lists all active and former power stations in Victoria, Australia. Power stations smaller than 1 MW in nameplate capacity are not



...



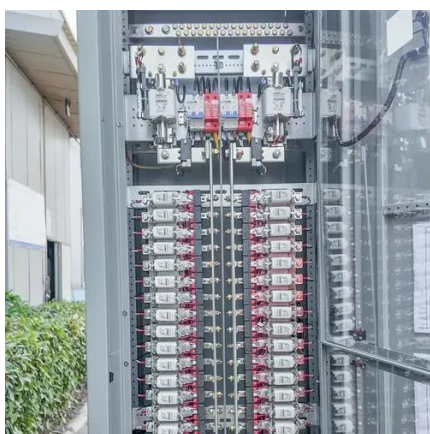
## Substations , Aus Power Equip

PAK Series Mobile Power substation is a reinforced unit for the power transformation MV/LV and distribution. Designed with a Resistant, ...



## Hydropower

Six mini hydroelectric power stations were built throughout the water supply network. In 2010, an energy recovery hydroelectric power station was ...



## Substations , Aus Power Equip

PAK Series Mobile Power substation is a reinforced unit for the power transformation MV/LV and distribution. Designed with a Resistant, reinforced and compact structure to ensure high ...





## Manufacturing and R& D in Australia

The team at Lilydale has decades of experience in design, manufacturing and project management, as well as dedicated product development resources. The site is a Centre of ...



## Campbellfield, Australia

Our new Campbellfield facility in Victoria serves as the central hub for manufacturing and administration, supporting our operations across ...

## Manufacturing and R& D in Australia

The team at Lilydale has decades of experience in design, manufacturing and project management, as well as dedicated product development ...



## Newport Power Station

Newport Power Station Newport is an intermediate load plant located on the west bank of the Yarra River, approximately 6km south-west of ...



## Campbellfield, Australia

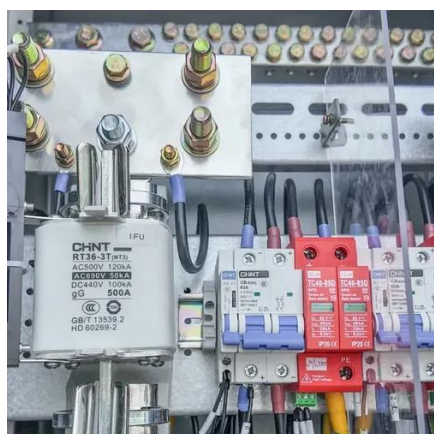
Our new Campbellfield facility in Victoria serves as the central hub for manufacturing and administration, supporting our operations across Australia and New Zealand. Located in ...



48V 100Ah

## Clayton Power Station: Landfill Gas to Electricity in ...

EDL's Clayton Power Station occupies the former sand quarries at Clayton in Victoria. Read more and download the project fact sheet for more ...



## List of power stations in Victoria (state)

Our story began more than nine decades ago when Jack Wilson arrived in Australia from the UK to work as a transformer electrical design engineer ...



## Off-Grid Portable Power Stations - Reliable & Ready to Go

Zero Grid offers a range of portable power stations, including EcoFlow and Bluetti models, ensuring efficient and dependable power for your adventures.



✓ IP65/IP55 OUTDOOR CABINET

✓ OUTDOOR MODULE CABINET

✓ OUTDOOR ENERGY STORAGE CABINET

✓ 19 INCH



## **Newport Power Station**

Newport Power Station Newport is an intermediate load plant located on the west bank of the Yarra River, approximately 6km south-west of Melbourne in the suburb of Newport.





## Contact Us

---

For inquiries, pricing, or partnerships:

<https://sccd-sk.eu>

Phone: +32 2 808 71 94

Email: [info@sccd-sk.eu](mailto:info@sccd-sk.eu)

Scan QR code for WhatsApp.

