



Copenhagen Communication Signal Base Station Project





Overview

The project, with a total volume of about 270 million Euros, will involve implementing best-in-class signaling technology, enabling driverless train operations and making Copenhagen's S-bane the world's largest automatic urban railway by 2033.

The project, with a total volume of about 270 million Euros, will involve implementing best-in-class signaling technology, enabling driverless train operations and making Copenhagen's S-bane the world's largest automatic urban railway by 2033.

The central artery of the Copenhagen S-train network is now in operation with a new Communications-Based Train Control System (CBTC) provided by Siemens Mobility. The section of line between Nordhavn and Carlsberg / Sydhavn via Copenhagen Central Station is now in operation with the new signaling.

DSB, the Danish rail operator, converts Copenhagen's commuter network, the S-Bane, into a fully automated system underpinned by state-of-the-art digital train control technology. The 172km S-Bane is integral to Copenhagen's public transport system. A stand-alone network serving 84 stations, its.

Engineering, Program/Construction Management (PM/CM), Sustainability The Danish signaling program is revolutionizing the rail network in Europe with It's designed to enhance punctuality and reliability while reducing life-cycle costs through economies of scale, streamlined equipment, and.

Siemens Mobility aims to implement GoA4, on 170 kilometres of the Danish S-bane network by 2033. This upgrade promises "up to 40 per cent more capacity without any new tracks" says Siemens Mobility CEO Michael Peter on LinkedIn. The Copenhagen S-bane network, spanning 170 kilometres and serving 88.

ts in modern conflict. From Ukraine to the Middle East and Sudan's civil war, recent crises have shown that infrastructure disruption is used deliberately to demoralise populations and destabilise democratic systems. Ukraine, in particular, has demonstrated how innovation—AI, drones, and cyber.

Banedanmark is in the midst of a complete renovation of the outdated Danish



signalling installations on the main and regional railway lines (Fjernbanen). ERTMS is a modern IT-based system where all data between safety systems and the trains is transmitted through radio. ERTMS is a European standard.



Copenhagen Communication Signal Base Station Project



Siemens Mobility to upgrade Copenhagen S-bane with ATO by 2033

In addition to onboard equipment upgrades, the project encompasses the installation of radio-based communication systems in depots and the expansion of the train ...

Siemens Mobility to upgrade Copenhagen S-bane ...

In addition to onboard equipment upgrades, the project encompasses the installation of radio-based communication systems in ...



Danish Signaling Program -- Copenhagen, Denmark

Upon completion, the program will have renewed the signaling systems of more than 3,200 kilometers of track and 560 train sets and locomotives ...



Copenhagen S-Bane transition to automated operation

DSB, the Danish rail operator, converts Copenhagen's commuter network, the S-Bane, into a fully automated system underpinned by



state-of-the-art digital train control technology.
The 172km ...



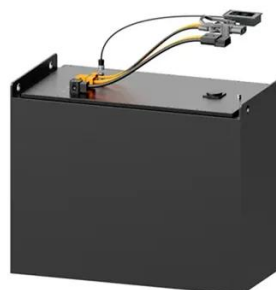
The Copenhagen Project

Public launch: Presenting the finalised Copenhagen Project during DIGITALEUROPE's flagship Masters of Digital event in February 2026, marking the formal start of advocacy and coalition ...



[Siemens Mobility to Transform Copenhagen's S ...](#)

The project, with a total volume of about 270 million Euros, will involve implementing best-in-class signaling technology, enabling ...



[Restoring order to Denmark's signalling programme](#)

Denmark's national ERTMS programme and the project to rollout CBTC on the Copenhagen S-Bane cleared several significant ...





[Siemens Mobility to Equip Copenhagen S-Bane with GoA4 ...](#)

Siemens Mobility has been contracted by Banedanmark (BDK) and DSB to upgrade the 170-kilometre-long S-Bane network in Copenhagen with GoA4 technology. This is ...



[About The Signalling Programme . UkBane](#)

Banedanmark is currently deploying the new signalling systems on the main and regional lines. The task is expected to be completed by 2030. The replacement of all signalling on the entire ...

[Siemens Mobility to Equip Copenhagen S-Bane ...](#)

Siemens Mobility has been contracted by Banedanmark (BDK) and DSB to upgrade the 170-kilometre-long S-Bane network in ...



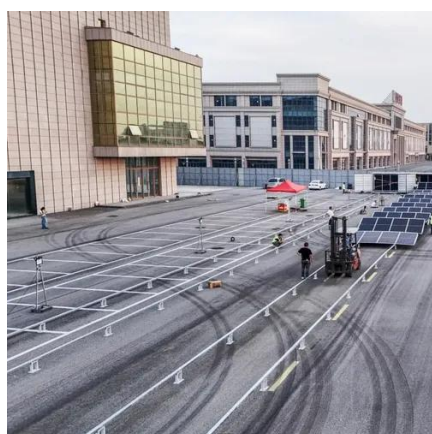
[Siemens Mobility to Transform Copenhagen's S-bane](#)

The project, with a total volume of about 270 million Euros, will involve implementing best-in-class signaling technology, enabling driverless train operations and ...



Central section of the Copenhagen S-Bane now in ...

The section of line between Nordhavn and Carlsberg / Sydhavn via Copenhagen Central Station is now in operation with the ...

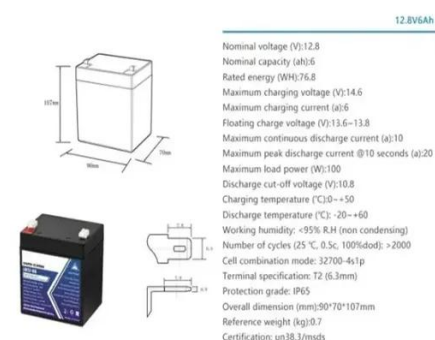


Pressemitteilung Siemens AG englisch

Siemens Mobility will upgrade the entire 170 kilometers long S-bane network in Copenhagen to the highest grade of automation (GoA4 technology) to enable unattended train operations ...

Danish Signaling Program -- Copenhagen, Denmark

Upon completion, the program will have renewed the signaling systems of more than 3,200 kilometers of track and 560 train sets and locomotives from four major operators. The Danish ...



Copenhagen S-Bane transition to automated ...

DSB, the Danish rail operator, converts Copenhagen's commuter network, the S-Bane, into a fully automated system underpinned by state-of-the-art ...



Central section of the Copenhagen S-Bane now in operation with ...

The section of line between Nordhavn and Carlsberg / Sydhavn via Copenhagen Central Station is now in operation with the new signaling system. This is the latest milestone ...



[Restoring order to Denmark's signalling programme](#)

Denmark's national ERTMS programme and the project to rollout CBTC on the Copenhagen S-Bane cleared several significant hurdles in 2021. Kevin Smith gets the latest ...



Contact Us

For inquiries, pricing, or partnerships:

<https://sccd-sk.eu>

Phone: +32 2 808 71 94

Email: info@sccd-sk.eu

Scan QR code for WhatsApp.

