



Cost of communication signal base station





Overview

The article discusses the costs associated with building and maintaining a communication base station, categorizing them into initial setup costs such as site acquisition, design and engineering, equipment procurement, construction and installation, permits and.

The article discusses the costs associated with building and maintaining a communication base station, categorizing them into initial setup costs such as site acquisition, design and engineering, equipment procurement, construction and installation, permits and.

The article discusses the costs associated with building and maintaining a communication base station, categorizing them into initial setup costs such as site acquisition, design and engineering, equipment procurement, construction and installation, permits and licensing, and testing and.

A base station represents an access point for a wireless device to communicate within its coverage area. It usually connects the device to other networks or devices through a dedicated high bandwidth wire or fiber optic connection. Base stations typically have a transceiver, capable of sending and.

Mobile communication base stations, as the “nerve endings” of telecommunications networks, undertake core functions such as signal coverage and data transmission. However, their construction, operation and maintenance, energy consumption, and security present numerous pain points, directly.

As global 5G deployments accelerate, the communication base station lifecycle cost has emerged as a critical bottleneck. Did you know operators spend 65% more on maintaining 4G/5G hybrid networks than standalone systems?

This reality forces us to ask: How can we reconcile technological progress.

With the rise in data traffic and continuous innovations in wireless technology, base station design has become a cornerstone in ensuring that networks are efficient, reliable, and scalable. In this article, we target the audience of Wireless Communications Engineers working within.



In today's high-frequency and data-intensive world, communication PCBs play a vital role in enabling technologies like 5G base stations, radar systems, satellite communication, and IoT devices. However, their pricing can vary drastically depending on the technical requirements and supply chain. What is a wireless base station?

A base station represents an access point for a wireless device to communicate within its coverage area. It usually connects the device to other networks or devices through a dedicated high bandwidth wire of fiber optic connection. Base stations typically have a transceiver, capable of sending and receiving wireless signals;.

Why are base stations important in cellular communication?

Base stations are important in the cellular communication as it facilitate seamless communication between mobile devices and the network communication. The demand for efficient data transmission are increased as we are advancing towards new technologies such as 5G and other data intensive applications.

What are the benefits of a base station?

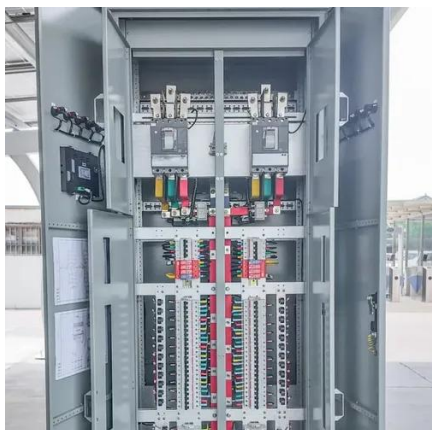
Power Efficiency: The energy-efficient base stations are contributing to minimize the operational expenditure and the environmental impact. **Internet of Things (IoT):** In light of the popularity, base stations assist in connecting several sensors from different types to smart devices and machines that are connected to a network.

What are the properties of a base station?

Here are some essential properties: **Capacity:** Capacity of a base station is its capability to handle a given number of simultaneous connections or users. **Coverage Area:** The coverage area is a base station is that geographical area within which mobile devices can maintain a stable connection with the base station.



Cost of communication signal base station



Blog -Communication Signal Tower Types & Design,Mobile Base Station

The cost of a 5G Cell on Wheels (COW) can vary significantly based on several factors, including the specific equipment and technology used, the capacity and coverage ...

What is the cost of building and maintaining a communication base station

Building and maintaining a communication base station is a complex process that involves various costs. These costs can be broadly categorized into two main categories: initial setup costs and ...

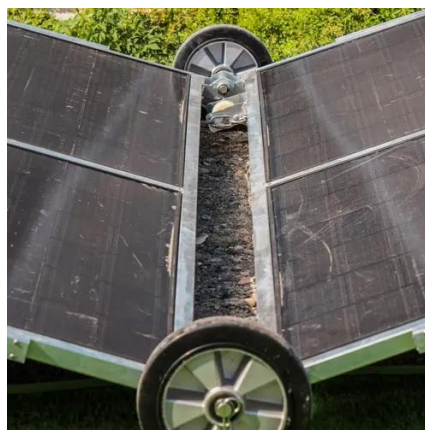


Blog -Communication Signal Tower Types & Design,Mobile Base ...

The cost of a 5G Cell on Wheels (COW) can vary significantly based on several factors, including the specific equipment and technology used, the capacity and coverage ...

Base Stations

Cost and infrastructure: Base station construction, as well as retrofitting base stations for deeper penetration requiring additional ...



Base Station Design for Wireless Communications Engineers

Base station design goes beyond the immediate technical requirements; it plays a significant role in managing costs and preparing for future growth. A well-designed base station not only ...



What is the cost of building and maintaining a ...

Building and maintaining a communication base station is a complex process that involves various costs. These costs can be broadly categorized into ...



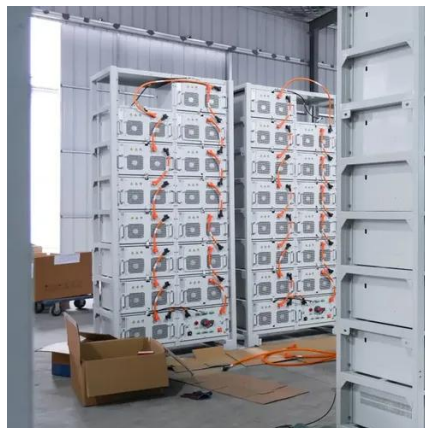
Base Stations

Cost and infrastructure: Base station construction, as well as retrofitting base stations for deeper penetration requiring additional investment in infrastructure like land ...



Communication Base Station Cost Benefit: Navigating the ...

As global 5G deployments accelerate, operators face a critical dilemma: How can they optimize communication base station cost-benefit ratios while meeting escalating connectivity demands?



Communication Base Station Lifecycle Cost , Huijue Group E-Site

As global 5G deployments accelerate, the communication base station lifecycle cost has emerged as a critical bottleneck. Did you know operators spend 65% more on maintaining 4G/5G hybrid ...

Communication Base Station TCO Analysis , Huijue Group E-Site

As global 5G adoption accelerates, communication base station total cost of ownership (TCO) has emerged as the elephant in the server room. Did you know operational expenses account for ...



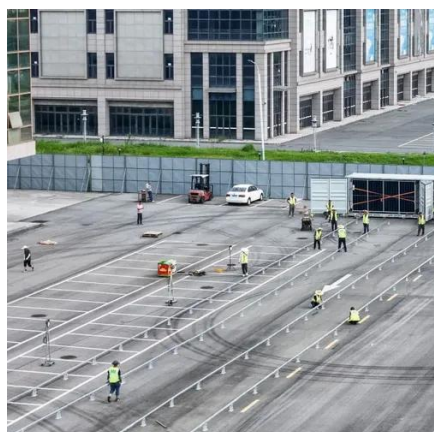
Communication PCB Price Breakdown in 2025: What Affects the ...

By making strategic choices and working with a trusted partner like KingSunPCB, you can reduce cost, improve quality, and speed up delivery--ensuring your communication ...



Communication PCB Price Breakdown in 2025: What Affects the Cost?

By making strategic choices and working with a trusted partner like KingSunPCB, you can reduce cost, improve quality, and speed up delivery--ensuring your communication ...



Mobile Communication Base Stations

Base stations are distributed over a wide range of areas (covering urban, mountainous, rural, coastal, and desert environments). Some sites are located in remote locations and face harsh ...

Communication Base Station Cost Optimization: Navigating the ...

As we develop self-healing base station networks, the focus shifts from mere cost-cutting to creating value-generating infrastructure. After all, shouldn't our towers do more than just ...





Contact Us

For inquiries, pricing, or partnerships:

<https://sccd-sk.eu>

Phone: +32 2 808 71 94

Email: info@sccd-sk.eu

Scan QR code for WhatsApp.

