



Current of each module in the battery cabinet





Overview

This manual uses notice icons to draw attention to important information regarding the safe operation and installation of the battery cabinet. The notice icons used in this manual are explained below, and should be taken into account and adhered to whenever they appear in the text.

This manual uses notice icons to draw attention to important information regarding the safe operation and installation of the battery cabinet. The notice icons used in this manual are explained below, and should be taken into account and adhered to whenever they appear in the text.

The PWRcell™ Battery Cabinet is a Type 3R smart battery enclosure that allows for a range of storage configurations to suit any need. DC-couple to Generac PWRzone solar or PWRgenerator. No other smart battery offers the power and flexibility of PWRcell. The PWRcell Battery Cabinet allows system.

On behalf of everyone at Eaton, we thank you for partnering with us, for trusting us to maintain your business continuity and for preventing downtime at your facility. Our suite of backup power, power distribution and power management products are designed to protect you from a host of threats.

The information provided in this document contains general descriptions, technical characteristics and/or recommendations related to products/solutions. This document is not intended as a substitute for a detailed study or operational and site-specific development or schematic plan. It is not to be.

ly contact a battery terminal or exposed wire connected to a battery terminal. NEVER allow a metal object, such as a tool, to contact more than one termination or battery terminal at a time, or to imultaneously contact a termination or battery terminal and a grounded ob e battery manufacturer.

HBMS100 Energy storage Battery cabinet is consisted of 13 HBMU100 battery boxes, 1 HBCU100 master control box, HMU8-BMS LCD module, cabinet and matched wiring harness, etc. The HBMU100 battery box and HBCU100 master control box communicate with each other via CANBUS. The HBMS100 battery box.

This manual is designed for ease of use, giving the user easy and quick reference



to information. This manual uses notice icons to draw attention to important information regarding the safe operation and installation of the battery cabinet. The notice icons used in this manual are explained below. How many amps can a battery cabinet hold?

However, a maximum system current of 30 amps should be maintained regardless of the number of interconnected cabinets. The battery cabinet is designed to hold the batteries listed in Table 1. Operating Ambient Temperature Range: -40 °C to +65 °C. Storage Ambient Temperature Range: -40 °C to +85 °C.

How many modules are in a pwrcell Battery Cabinet?

Inside of the PWRcell Battery Cabinet, battery modules are stacked two deep on three levels, allowing for up to six modules to be connected in series. You can upgrade an existing PWRcell Battery Cabinet by adding Battery Modules and a Module Spacer (APKE00008).

What is a pwrcell Battery Cabinet?

No other smart battery offers the power and flexibility of PWRcell. The PWRcell Battery Cabinet allows system owners the flexibility to scale from an economical 9kWh to a mas-sive 18kWh by installing additional battery modules to the PWRcell Battery Cabinet. An existing PWRcell Battery Cabinet can be upgraded with additional modules.

What temperature can a battery cabinet hold?

The battery cabinet is designed to hold the batteries listed in Table 1. Operating Ambient Temperature Range: -40 °C to +65 °C. Storage Ambient Temperature Range: -40 °C to +85 °C. Humidity: This unit is capable of operating in an ambient relative humidity range of 0% to 95%, non-condensing.



Current of each module in the battery cabinet



BATTERY CABINET

An existing PWRcell Battery Cabinet can be upgraded with additional modules. Use the graphic below and the chart on the back of this sheet to understand what components you need for ...

Galaxy Lithium-ion Battery Cabinet

Manually set the battery breaker of each individual battery cabinet to the OFF (open) position to disconnect the battery power from the UPS. NOTE: The system BMS and rack BMS will still

...



[-48 VDC Battery Cabinet Installation and User Manual ...](#)

Verify that no current will flow when the battery is connected or disconnected by opening battery disconnects (if available) or adjusting the system to match battery voltage.

[Eaton Samsung Gen 3 Battery Cabinet Installation and ...](#)

Before installing the battery cabinet, read and understand how this manual applies to the system being installed. Use the procedures and



illustrations in this section to create a logical plan for ...



[Battery Module Cabinet Guide: Definition, Uses & Design](#)

A battery module cabinet is a specially designed enclosure that holds and organizes multiple battery modules in one secure place. Think of it as the "home" where ...



Battery Cabinet

When multiple SmartLi cabinets are connected in parallel, the BCU balances currents between cabinets to improve system reliability.



[Simple installation manual of DC cabinet](#)

The DC cabinet mainly collects and distributes current to each battery cluster to realize charge and discharge management function. The DC cabinet consists of 1 DC cabinet, 9 DC circuit ...





[Battery Module Cabinet Guide: Definition, Uses](#)

A battery module cabinet is a specially designed enclosure that holds and organizes multiple battery modules in one secure place. Think ...



[SmartGen HBMS100 Energy storage Battery cabinet](#)

The HBMU100 battery box and HBCU100 master control box communicate with each other via CANBUS. The HBMS100 battery box collects the voltage and temperature of the single cell ...



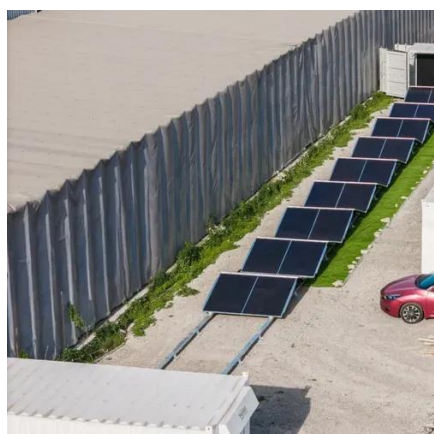
PWRcell 2 Battery Cabinet

Battery Enclosure Only: APKE00076 3.0 kWh
PWRcell 2 DCB Battery Module: G0080041 The PWRcell 2 Battery Cabinet can be configured for 9-18 kWh of storage capacity using 3.0 kWh ...



[SmartGen HBMS100 Energy storage Battery cabinet](#)

The HBMU100 battery box and HBCU100 master control box communicate with each other via CANBUS. The HBMS100 battery box collects the ...





U-ENM00044

Select the electric wire size of which the rated current is equal to or over that of the battery cabinet input/output wiring. Temperature rise or short-circuit may be caused if the electric wire ...





Contact Us

For inquiries, pricing, or partnerships:

<https://sccd-sk.eu>

Phone: +32 2 808 71 94

Email: info@sccd-sk.eu

Scan QR code for WhatsApp.

