



# Do I need to discharge the battery cabinet when moving it Site





## Overview

---

How do you dispose of a battery?

Train employees or household members to identify compromised batteries and properly dispose of them through designated recycling or hazardous waste programs. Keep lithium batteries away from direct sunlight and avoid leaving them lying around in unprotected areas. 3. Keep Battery Storage Areas Well-Ventilated.

How should batteries be stored?

Manufacturer instructions: Always refer to the manufacturer's instructions on the best/safest way to store batteries and adhere to their guidance. Storage Temperature Range: Batteries should be stored in a cool, dry place, ideally at room temperature.

How do you store a lithium battery?

Extreme heat and cold can damage lithium batteries, affecting performance and safety. Store batteries in cool, dry places, away from direct sunlight, heaters, or ignition sources. The ideal storage temperature range is between 40°F and 77°F (4°C - 25°C) for optimal battery lifespan. 5. Implement Leak Containment Measures.

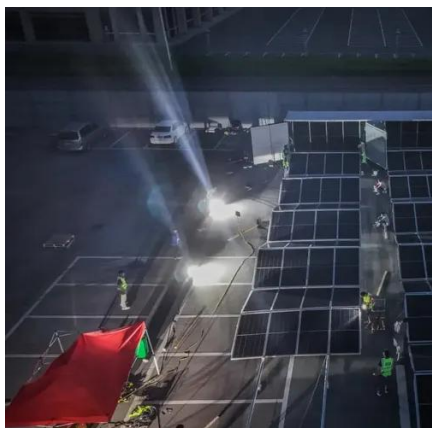
Can lithium batteries be stored in the refrigerator?

In reality, lithium batteries are generally stable and safe when handled correctly. Another myth is that you should store them in the refrigerator. However, cold environments can harm battery performance, so a room-temperature spot is best. In winter, cold temperatures can challenge lithium battery performance, making proper storage critical.



## Do I need to discharge the battery cabinet when moving it Site

---



### [Guide to Battery Cabinets for Lithium-Ion Batteries: ...](#)

This guide explores six key factors to consider when purchasing a battery cabinet for lithium-ion batteries. Whether you're ...

### **Guide to Battery Cabinets for Lithium-Ion Batteries: 6 Essential**

This guide explores six key factors to consider when purchasing a battery cabinet for lithium-ion batteries. Whether you're looking for fire protection, safe charging options, or the ...



### **Do I need to discharge the battery when moving the battery cabinet ...**

Avoid over-discharging: Do not fully discharge the battery as this may damage the battery. When the device prompts that the battery is low, charge it as soon as possible.



### **Do I need to discharge the battery when moving the battery ...**

Avoid over-discharging: Do not fully discharge the battery as this may damage the battery. When the device prompts that the battery is low, charge it



as soon as possible.



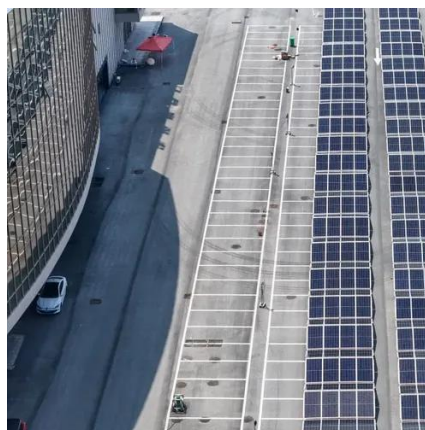
### Moving the Battery Cabinets. Liebert EXM

The battery cabinet should be installed in an isolated area because it contains high voltage batteries that can be dangerous. Only properly trained personnel should be allowed to access ...



### Liebert® EXS External Battery Cabinet Installer/User Guide

Batteries must be handled, transported and recycled or discarded in accordance with federal, state and local regulations. Because lead is a toxic substance, lead-acid batteries must be ...



### **How to Store Lithium-Ion Batteries**

Move the battery to a safe location and allow it to cool. Observe it for smoking, swelling, or leaking; do not use the battery if any of these ...





## A Guide To Safely Storing Lithium Batteries

Unlike other batteries, lithium batteries can neither be fully discharged when stored. Neither can they be fully charged, but need to be kept at 40%-60% charge, which can ...

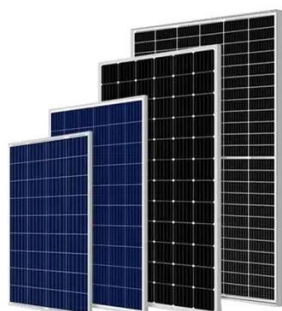


## Moving with Batteries? Here's How to Do It Safely ...

Learn how to safely pack and transport batteries during a move. Follow expert tips to avoid damage, ensure compliance, and ...

## Remove the Battery Cabinet from the Pallet

Move at a slow pace and pay close attention on the floor conditions and the balance of the battery cabinet. Failure to follow these instructions can result in death, serious injury, or equipment ...



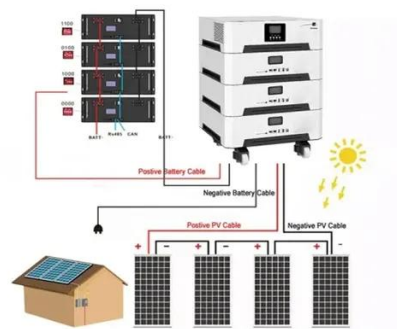
## **Best Practices and Considerations for Siting Battery Storage ...**

o Depending on the size of the battery and needs of the site, it is important to determine early on if the battery will be sited in the facility or outside of it. o This decision may be impacted by any ...



## How to Store Lithium Batteries Safely: Off-Grid Essential Guide

This precaution helps prevent unnecessary battery drain, as even in an "off" state, the battery can slowly discharge, which may accelerate wear and reduce overall lifespan. Before long-term ...



## How to Store Lithium-Ion Batteries

Move the battery to a safe location and allow it to cool. Observe it for smoking, swelling, or leaking; do not use the battery if any of these conditions are noticed.

## [How to Store Lithium Batteries Safely: Off-Grid ...](#)

This precaution helps prevent unnecessary battery drain, as even in an "off" state, the battery can slowly discharge, which may accelerate wear and ...



## Moving with Batteries? Here's How to Do It Safely and Efficiently

Learn how to safely pack and transport batteries during a move. Follow expert tips to avoid damage, ensure compliance, and protect your batteries.



## Contact Us

---

For inquiries, pricing, or partnerships:

<https://sccd-sk.eu>

Phone: +32 2 808 71 94

Email: [info@sccd-sk.eu](mailto:info@sccd-sk.eu)

Scan QR code for WhatsApp.

