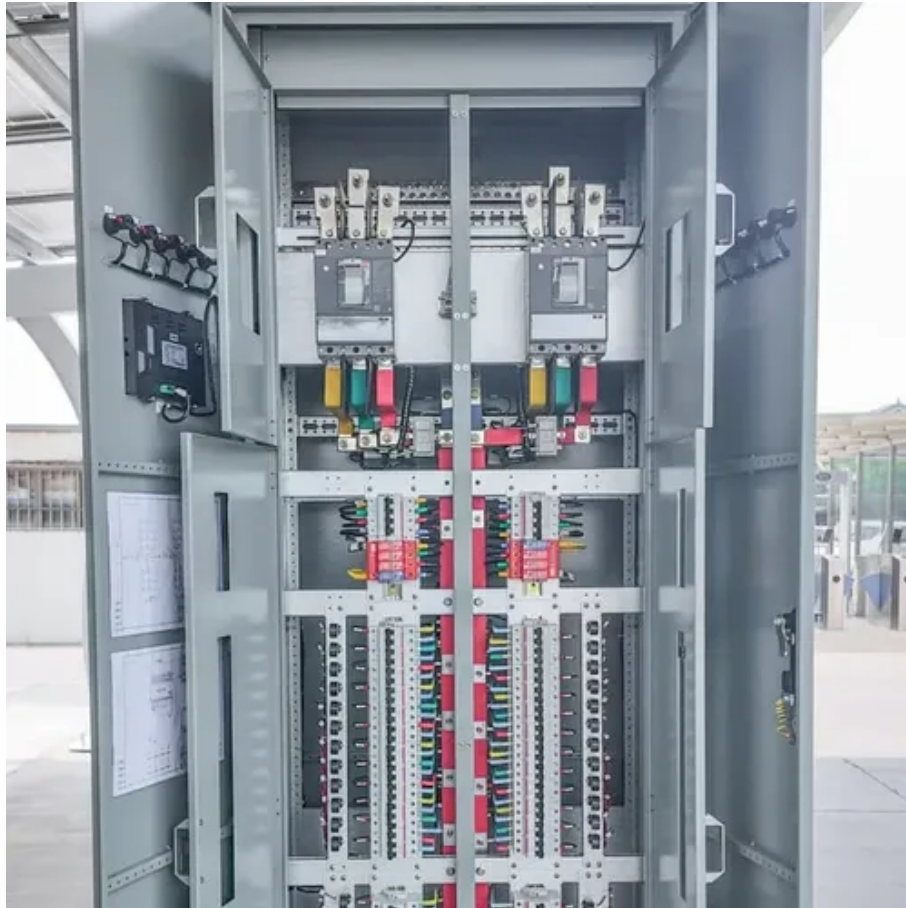




# Do Iranian inverters support lithium batteries





## Overview

---

The short answer is no - proper inverter matching is crucial for optimal performance and safety. Let's examine the key compatibility factors for lithium battery and LiFePO4 battery systems. Lithium batteries require specific inverter features: Voltage Matching.

The short answer is no - proper inverter matching is crucial for optimal performance and safety. Let's examine the key compatibility factors for lithium battery and LiFePO4 battery systems. Lithium batteries require specific inverter features: Voltage Matching.

When setting up solar energy systems or home energy storage, a common question arises: Are lithium batteries compatible with all inverters?

The short answer is no - proper inverter matching is crucial for optimal performance and safety. Let's examine the key compatibility factors for lithium.

Known for their excellent thermal stability and longevity, LiFePO4 batteries are a reliable choice for both residential and commercial energy storage solutions. Lithium-ion batteries have several advantages. They provide more energy and charge faster. They also last longer and require less.

Can Iranian 12v lithium battery be connected to an i ery can take your renewable energy setup to the next level. This combination allows for better energy storage,impr ved efficiency,and greater resilience during power outages. LiFePO4 batteries are particularly well-suited for solar appli ations.

An inverter is the heart of any backup power system, converting DC (direct current) energy stored in batteries into usable AC (alternating current) energy for household or commercial appliances. On the other hand, lithium batteries store energy and release it when required. Both work in tandem, and.

However, achieving full compatibility between lithium batteries and inverters requires consideration of multiple factors, including electrical parameters, communication protocols, and battery management systems (BMS). This article analyzes these compatibility essentials and introduces how GSL.



In order to grasp the compatibility between inverters and lithium batteries, it's important to have a basic understanding of what they are. Let's start with inverters. An inverter is essentially a device that converts DC (direct current) power into AC (alternating current) power, allowing you to.



## Do Iranian inverters support lithium batteries

---



### [Can Iranian 12v lithium battery be connected to an inverter](#)

How many batteries do I need for a 1500-watt inverter? In short, For 1500 watt inverter you'll need two 12V 100Ah lead-acid batteries connected in series or a single 24V 100Ah lithium battery to ...

### [Best Lithium Ion Battery in Iran , Battery Manufacturers](#)

At Lento India, we bring world-class lithium battery-based inverters and storage systems that are now gaining strong traction in Iran's residential, commercial, and industrial ...



### [Importance of Compatibility Between Inverter and ...](#)

Inverters that are not designed to work with lithium batteries may overcharge or undercharge the battery, leading to premature ...



## Compatibility Analysis Between Lithium Batteries and Inverters

Ensuring compatibility between lithium batteries and inverters involves multi-dimensional coordination across electrical parameters,



communication, and environmental ...



## Lithium Battery Combined With Inverter: Key Compatibility Points

Lithium batteries, including lithium-ion batteries and lithium iron phosphate batteries (LiFePO4), do not necessarily need to be paired with a specially designed inverter.



## Understanding Hybrid Inverters with Lithium Batteries

In the realm of renewable energy, hybrid inverters paired with lithium batteries are becoming increasingly popular for both residential and commercial applications. This ...



## Understanding Hybrid Inverters with Lithium Batteries

In the realm of renewable energy, hybrid inverters paired with lithium batteries are becoming increasingly popular for both residential ...





## Can Lithium Batteries Work With Any Type of ...

The short answer is no - proper inverter matching is crucial for optimal performance and safety. Let's examine the key compatibility ...

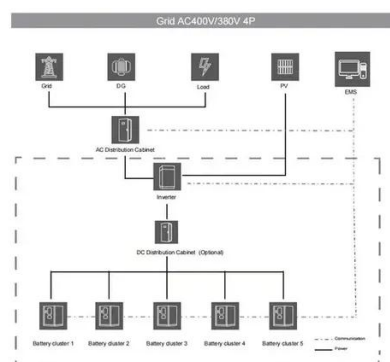


## Compatibility of Lithium-Ion Batteries with Existing ...

In summary, installing a lithium-ion battery with an existing ...

## Compatibility Analysis Between Lithium Batteries ...

Ensuring compatibility between lithium batteries and inverters involves multi-dimensional coordination across electrical parameters, ...



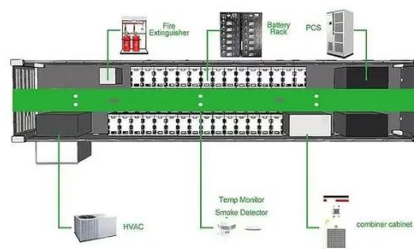
## **Compatibility of Lithium-Ion Batteries with Existing Inverters**

In summary, installing a lithium-ion battery with an existing inverter is not only feasible but also highly beneficial. From improved efficiency and performance to enhanced energy storage and ...



## How to Choose the Right Inverter for Lithium Batteries?

Answer: To choose the right inverter for lithium batteries, match the inverter's voltage and capacity to your battery's specifications, prioritize pure sine wave inverters for ...



## **Importance of Compatibility Between Inverter and Lithium Battery**

Inverters that are not designed to work with lithium batteries may overcharge or undercharge the battery, leading to premature degradation. Ensuring compatibility means that ...

## Can all inverters use lithium batteries?

Not all inverters are designed to work with lithium batteries, so it's essential to ensure that your chosen inverter can support this type of battery. The first thing you need to ...



## Can Lithium Batteries Work With Any Type of Inverter?

The short answer is no - proper inverter matching is crucial for optimal performance and safety. Let's examine the key compatibility factors for lithium battery and LiFePO4 battery ...



## Contact Us

---

For inquiries, pricing, or partnerships:

<https://sccd-sk.eu>

Phone: +32 2 808 71 94

Email: [info@sccd-sk.eu](mailto:info@sccd-sk.eu)

Scan QR code for WhatsApp.

