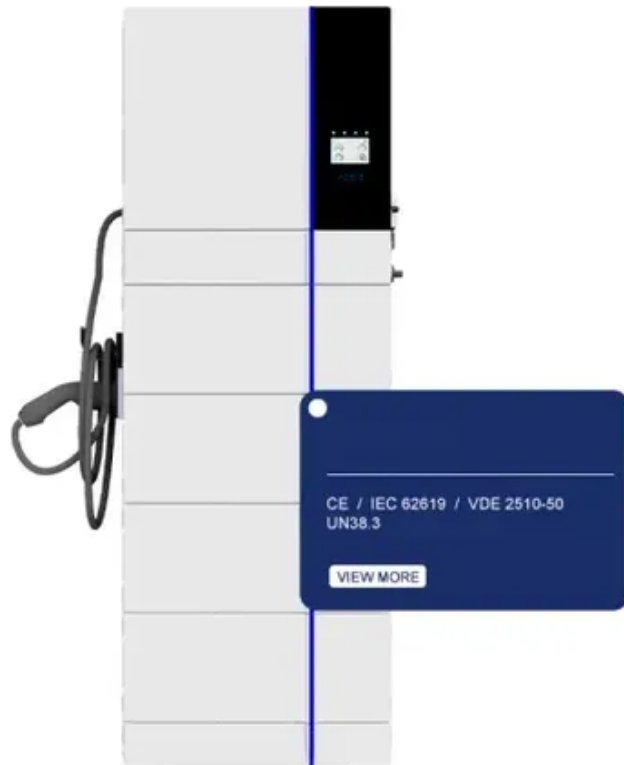




Do base station batteries share power How to connect them





Overview

This article will help you connect your battery to your WiFi. It will also help you troubleshoot internet connectivity issues. How do I test my Base battery?

This article explains how you can simulate a power outage and test your Base battery system once your.

This article will help you connect your battery to your WiFi. It will also help you troubleshoot internet connectivity issues. How do I test my Base battery?

This article explains how you can simulate a power outage and test your Base battery system once your.

Base batteries run in two directions, which is how Base is able to keep costs low for homeowners. The batteries charge during off-peak hours, like midday and late at night, when energy is more available and demand is low. When the grid goes down, the battery hub separates your house from the grid.

Base station energy storage batteries play a critical role in enhancing efficiency and reliability in telecommunication networks. Their primary purpose is **1. to ensure continuous power supply during outages, **2. to optimize energy consumption by storing excess energy generated from renewable.

A base station (or BTS, Base Transceiver Station) typically includes: Base station energy storage refers to batteries and supporting hardware that power the BTS when grid power is unavailable or to smooth out intermittent renewable sources like solar. When evaluating a solution for your tower.

Batteries are interconnected to increase the battery voltage or to increase the battery capacity or both. Multiple interconnected batteries are called a battery bank. When batteries are connected in series, the voltage increases. When batteries are connected in parallel, the capacity increases.

As 5G deployment accelerates (we're seeing 15% year-over-year growth in base station installations), operators face a perfect storm: Well, traditional diesel generators just aren't cutting it anymore. They're sort of like using a sledgehammer to crack a nut—expensive to maintain and environmentally.



The supply is grid powered right now, but none of the radios connected to it even notice when. These Telecom base stations are highly dependent on a stable power supply for efficient operation. However, power outages, voltage fluctuations, and the quest for more environmentally friendly energy.



Do base station batteries share power How to connect them

Overview of Telecom Base Station Batteries

In terms of technical realization, telecom energy storage systems usually adopt lead-acid batteries or lithium ion solar batteries as the energy storage medium.



How the Base battery works: A complete guide to ...

This guide covers everything you need to know about how your Base battery operates, protects your home, and supports the power grid. You'll also ...



3. Battery bank wiring

Batteries are interconnected to increase the battery voltage or to increase the battery capacity or both. Multiple interconnected batteries are called a ...

What Are the Key Considerations for Telecom Batteries in Base Stations?

Telecom batteries for base stations are backup power systems that ensure uninterrupted connectivity during grid outages. Typically using



valve-regulated lead-acid (VRLA) or lithium ...



[How about base station energy storage batteries](#)

One significant aspect of these batteries is their ability to improve grid resilience, which is crucial in areas prone to power ...



[How about base station energy storage batteries , NenPower](#)

One significant aspect of these batteries is their ability to improve grid resilience, which is crucial in areas prone to power interruptions. This detailed analysis provides an ...



[How the Base battery works: A complete guide to grid ...](#)

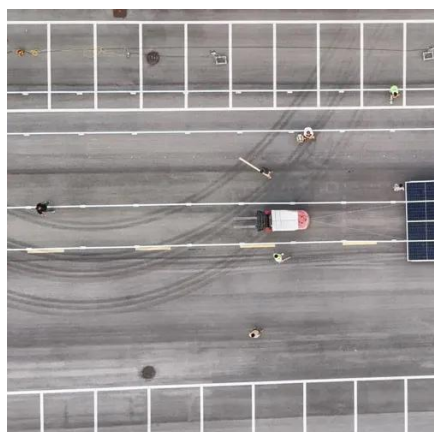
This guide covers everything you need to know about how your Base battery operates, protects your home, and supports the power grid. You'll also find answers to common battery myths ...





[Base Station Energy Storage Battery Systems: Powering ...](#)

Forward-thinking operators aren't just buying batteries--they're building virtual power plants. By aggregating distributed storage across hundreds of base stations, they can:



[Do base station batteries share a common power source](#)

This guide covers everything you need to know about how your Base battery operates, protects your home, and supports the power grid. You'll also find answers to common battery myths ...

[Installation and hardware , Base Help Center](#)

This article explains how you can simulate a power outage and test your Base battery system once your battery is installed.



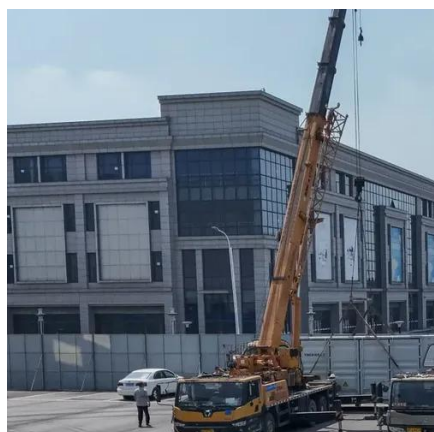
3. Battery bank wiring

Batteries are interconnected to increase the battery voltage or to increase the battery capacity or both. Multiple interconnected batteries are called a battery bank. When batteries are ...



What Powers Telecom Base Stations During Outages?

Telecom batteries for base stations are backup power systems using valve-regulated lead-acid (VRLA) or lithium-ion batteries. They ensure uninterrupted connectivity ...



Revolutionising Connectivity with Reliable Base Station Energy ...

Discover how base station energy storage empowers reliable telecom connectivity, reduces OPEX, and supports hybrid energy.



Contact Us

For inquiries, pricing, or partnerships:

<https://sccd-sk.eu>

Phone: +32 2 808 71 94

Email: info@sccd-sk.eu

Scan QR code for WhatsApp.

