



# Do we need to install a base station next to the communication tower





## Overview

---

Here's a step-by-step guide to the process: 1. Site Acquisition and Survey  
Objective: Select and acquire a suitable location for the BTS. Activities: Identify coverage gaps or expansion areas. Conduct a site survey to evaluate terrain, accessibility, and power availability.

Here's a step-by-step guide to the process: 1. Site Acquisition and Survey  
Objective: Select and acquire a suitable location for the BTS. Activities: Identify coverage gaps or expansion areas. Conduct a site survey to evaluate terrain, accessibility, and power availability.

A typical communication base station combines a cabinet and a pole. The cabinet houses critical components like main base station equipment, transmission equipment, power supply systems, and battery banks. Meanwhile, the pole serves as a mounting point for antennas, Remote Radio Units (RRUs), and.

The present-day tele-space is incomplete without the base stations as these constitute an important part of the modern-day scheme of wireless communications. They are referred to as cell towers or cellular antennas. These types of objects are an inevitability since they serve the purpose of.

Installing a Base Transceiver Station (BTS) is a critical step in building mobile communication networks. Here's a step-by-step guide to the process: 1. Site Acquisition and Survey  
Objective: Select and acquire a suitable location for the BTS. Activities: Identify coverage gaps or expansion areas.

Building new towers or collocating antennas on existing structures requires compliance with the Commission's rules for environmental review. These rules ensure that entities constructing facilities to support Commission-licensed services take appropriate measures to protect environmental and.

In the 1990s, GSM technology was introduced, which revolutionized mobile communication, offering not only calls but also the ability to send text messages (SMS). The following decades brought 3G, 4G, and now 5G technologies, which enabled the use of high-speed mobile internet, video streaming, and.

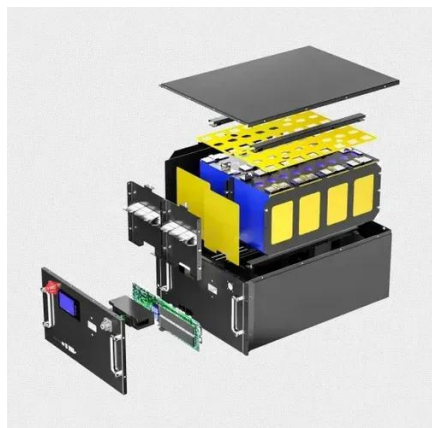
A base station plays a pivotal role in the realm of telecommunications, acting as



the cornerstone of connectivity. It enables seamless communication by linking various wireless devices to broader networks, ensuring that data flows efficiently from one point to another. A base station is an integral.



## Do we need to install a base station next to the communication tower



### Base Stations

The present-day tele-space is incomplete without the base stations as these constitute an important part of the modern-day scheme of wireless communications. They are ...

### [Gateway and Base Station Installation Guide](#)

Installing a Gateway or Base Station y or Base Station requires the same steps. The only difference is for a gateway using the antenna mounted to the enclosure



### [Do Definition & Meaning , Britannica Dictionary](#)

DO meaning: 1 : to perform (an action or activity);  
2 : used with what to ask or talk about a person's job



### [Do: Definition, Meaning, and Examples](#)

As a verb, "do" means to perform, carry out, or execute an action. It's one of the most common verbs in English, used in a wide range of contexts, from simple tasks to ...



## Do

1. To behave or conduct oneself; act: Do as I say and you won't get into trouble. 2. a. To get along; fare: students who do well at school. b. To carry on; manage: I could do without your ...



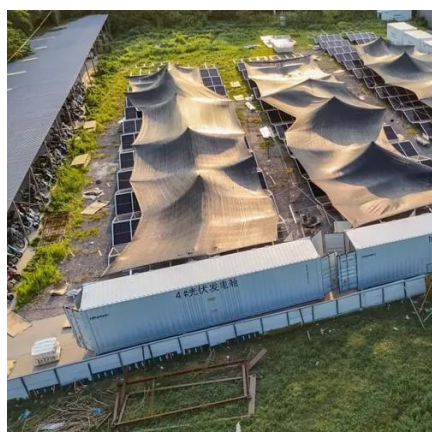
## Process of Installing a Base Transceiver Station (BTS)

Installing a Base Transceiver Station (BTS) is a critical step in building mobile communication networks. Here's a step-by-step guide to the process:



## Tower and Antenna Siting

Equipped with an electromagnetic wave antenna, often placed on a tall mast, the base station enables communication between ...





## Do

To do is to act, perform, or undertake. When you do chores, you engage in the activity of cleaning the kitchen or taking out the trash. Do is one of the most frequently used verbs in English. You ...



## Base Stations and Cell Towers: The Pillars of Mobile Connectivity

Base stations and cell towers are critical components of cellular communication systems, serving as the infrastructure that supports seamless mobile connectivity.

## Base Stations

The present-day tele-space is incomplete without the base stations as these constitute an important part of the modern-day scheme ...



## [DO Definition & Meaning , Dictionary](#)

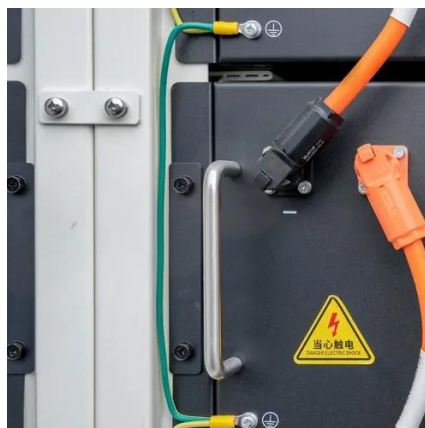
DO definition: to perform (an act, duty, role, etc.). See examples of do used in a sentence.





## DO , English meaning

Do is one of three auxiliary verbs in English: be, do, have. We use do to make negatives (do + not), to make question forms, and to make the verb more emphatic. ...



## DO definition and meaning , Collins English Dictionary

When you do something, you take some action or perform an activity or task. Do is often used instead of a more specific verb, to talk about a common action involving a particular thing.

## DO , definition in the Cambridge English Dictionary

Do is one of three auxiliary verbs in English: be, do, have. We use do to make negatives (do + not), to make question forms, and to make the verb more emphatic. ...



## Tower and Antenna Siting

Building a new tower or collocating an antenna on an existing structure requires compliance with the Commission's rules for environmental review. These regulatory processes ensure that ...



## What Is A Base Station?

In summary, the base station is the active component responsible for network communication, while the tower is the physical structure that supports the base station.



## Do Definition

The term 'do' serves primarily as an auxiliary verb that helps form questions, negatives, and emphatic statements in English. It also functions as a main verb meaning to perform or carry ...

## DO Definition & Meaning

The meaning of DO is to bring to pass : carry out.  
How to use do in a sentence. Feasible and Doable



## What Is A Base Station?

In summary, the base station is the active component responsible for network communication, while the tower is the physical ...

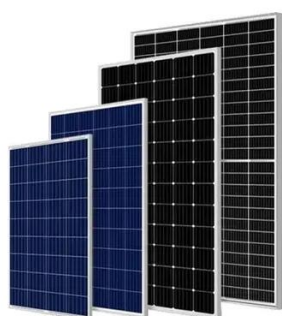






## Construction Procedures and Standards of Cellular Mobile ...

4.9.2.2 Licensees shall provide adequate separation between Cellular Mobile Base Stations and Towers and surrounding buildings while constructing Cellular Mobile Base Stations and ...



## Mobile Phone Base Stations EMF / Health Fact Pack

In this instance, the base stations need to be closer together to provide increased capacity rather than coverage, and as a result of their proximity to one another, each base station needs to ...

## The Base Station in Wireless Communications: The Key to ...

Equipped with an electromagnetic wave antenna, often placed on a tall mast, the base station enables communication between mobile terminals (such as mobile phones or ...



## Process of Installing a Base Transceiver Station ...

Installing a Base Transceiver Station (BTS) is a critical step in building mobile communication networks. Here's a step-by-step guide to ...



## [Complete Guide to 5G Base Station Construction](#)

Explore how 5G base stations are built--from site planning and cabinet installation to power systems and cooling solutions. Learn the ...





## Contact Us

---

For inquiries, pricing, or partnerships:

<https://sccd-sk.eu>

Phone: +32 2 808 71 94

Email: [info@sccd-sk.eu](mailto:info@sccd-sk.eu)

Scan QR code for WhatsApp.

