



Does the communication small base station have wind power generation





Overview

The wind-solar-diesel hybrid power supply system of the communication base station is composed of a wind turbine, a solar cell module, an integrated controller for hybrid energy.

The wind-solar-diesel hybrid power supply system of the communication base station is composed of a wind turbine, a solar cell module, an integrated controller for hybrid energy.

Hybrid energy solutions enable telecom base stations to run primarily on renewable energy sources, like solar and wind, with the diesel generator as a last resort. This reduces emissions, aligns with sustainability goals, and even opens up opportunities for carbon credits or green. Hybrid energy.

Outdoor Communication Energy Cabinet With Wind Turbine Highjoule base station systems support grid- connected, off-grid, and hybrid configurations, including integration with solar panels or wind turbines for sustainable, self-sufficient operation. Hybrid solar PV/hydrogen fuel cell-based cellular.

A hybrid energy system integrates multiple energy sources—typically combining solar energy, wind power, and diesel generators or battery storage. By using a mix of renewable energy and conventional sources, hybrid systems balance the cost-efficiency of renewables with the reliability of traditional.

This paper describes the design of an off-grid wind-solar complementary power generation system of a 1500m high mountain weather station in Yunhe County, Lishui City. It combines wind and solar power generation, city power and battery energy storage to provide green, stable and reliable.

The wind-solar-diesel hybrid power supply system of the communication base station is composed of a wind turbine, a solar cell module, an integrated controller for hybrid energy. The wind-solar-diesel hybrid power supply system of the communication base station is composed of a wind turbine, a.

Communication base station wind power small Powered by Solar Storage Container Solutions Page 2/7 Overview Can wind energy be used to power mobile phone base stations?



Worldwide thousands of base stations provide relaying mobile phone signals.
Every off-grid base station has a diesel generator up.



Does the communication small base station have wind power generat



[Output power of wind power for communication base stations](#)

In this study, wind turbines are investigated as a potential source of renewable electricity for rural areas' cellular base stations. By analyzing the feasibility, cost-effectiveness, and technical ...

What type of wind turbine should be selected for communication base

In summary, communication base stations should be equipped with wind turbines that offer strong wind resistance, moderate power output, high stability and reliability, as well as durability and ...



[Small-sized communication base station wind and solar ...](#)

This paper describes the design of an off-grid wind-solar complementary power generation system of a 1500m high mountain weather station in Yunhe County, Lishui City.



What type of wind turbine should be selected for communication ...

In summary, communication base stations should be equipped with wind turbines that offer strong wind resistance, moderate power output, high

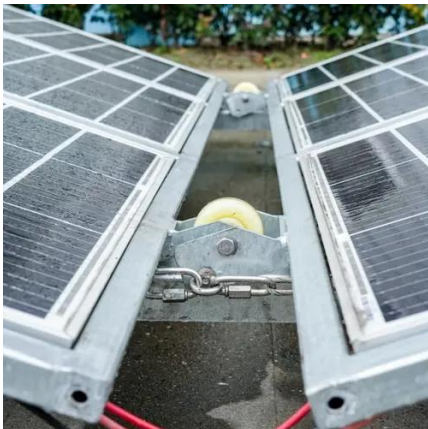


stability and reliability, as well as durability and ...



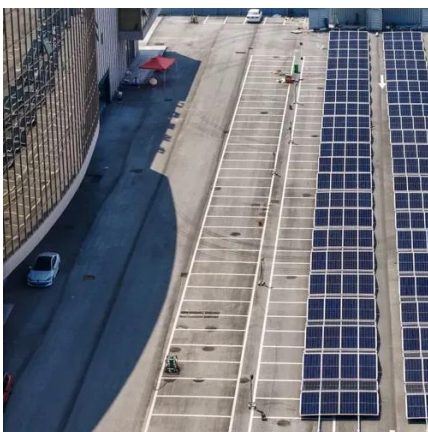
Wind-solar hybrid for outdoor communication base stations

Integrated Solar-Wind Power Container for Communications This large-capacity, modular outdoor base station seamlessly integrates photovoltaic, wind power, and energy storage to provide a ...



What equipment does wind power in communication base stations have

The wind-solar-diesel hybrid power supply system of the communication base station is composed of a wind turbine, a solar cell module, an integrated controller for hybrid energy.



The Role of Hybrid Energy Systems in Powering Telecom Base Stations

Hybrid energy solutions enable telecom base stations to run primarily on renewable energy sources, like solar and wind, with the diesel generator as a last resort. This ...



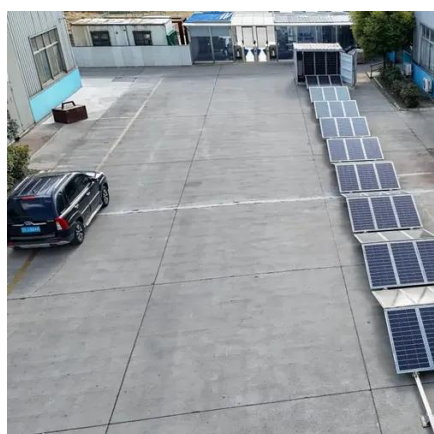
What equipment does wind power in communication base ...

The wind-solar-diesel hybrid power supply system of the communication base station is composed of a wind turbine, a solar cell module, an integrated controller for hybrid energy.



The connection between communication base station and ...

Hybrid energy solutions enable telecom base stations to run primarily on renewable energy sources, like solar and wind, with the diesel generator as a last resort. This reduces emissions, ...



Communication base station wind power small

This large-capacity, modular outdoor base station seamlessly integrates photovoltaic, wind power, and energy storage to provide a stable DC48V power supply and optical distribution.



The Role of Hybrid Energy Systems in Powering ...

Hybrid energy solutions enable telecom base stations to run primarily on renewable energy sources, like solar and wind, with the ...



CN111447693A

The sail module and the power generation module are erected on a high-rise signal tower, the conversion efficiency is improved through the built-in speed-increasing gear structure, the



[\(PDF\) Small windturbines for telecom base stations](#)

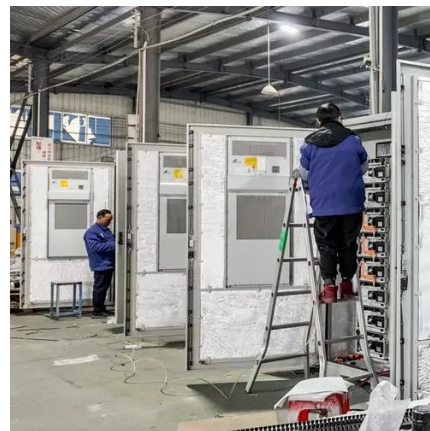
Worldwide thousands of base stations provide relaying mobile phone signals. Every off-grid base station has a diesel generator up to 4 kW to provide electricity for the ...



[\(PDF\) Small windturbines for telecom base](#)

...

Worldwide thousands of base stations provide relaying ...





Contact Us

For inquiries, pricing, or partnerships:

<https://sccd-sk.eu>

Phone: +32 2 808 71 94

Email: info@sccd-sk.eu

Scan QR code for WhatsApp.

