



Double glass components are suitable for





Overview

They are particularly suitable for high-reflectivity environments, such as white roofs or snowy surfaces. Their dual-glass structure ensures superior durability, extends system lifespan, and reduces maintenance costs.

They are particularly suitable for high-reflectivity environments, such as white roofs or snowy surfaces. Their dual-glass structure ensures superior durability, extends system lifespan, and reduces maintenance costs.

Double glass in the context of solar panels refers to a specific design feature that involves using two layers of glass in module construction. 1. Enhanced durability, 2. Improved energy efficiency, 3. Better aesthetics, 4. Increased warranty periods. The most significant detail here is that double.

By encapsulating solar cells between two layers of glass, these modules offer unparalleled durability and efficiency. But what exactly sets them apart?

What are double glass solar modules?

Traditional solar panels typically feature a glass front and a polymer backsheet. In contrast, double glass.

Glass-glass PV modules, also known as double glass solar panels, are photovoltaic modules encapsulated with tempered glass on both the front and back sides. Compared to traditional glass-backsheet modules, they offer greater durability and environmental resistance. The dual-glass structure provides.

Double glass solar panels are transforming the renewable energy landscape. Their unique design offers durability, efficiency, and aesthetic appeal, making them a popular choice for both residential and commercial installations. As the technology advances, understanding how these panels operate.

Double side glass technology makes panels stronger. It helps them handle bad weather and last over 25 years. Pick places with bright surfaces like white gravel for installation. This helps panels make more energy from light that bounces off the ground. Clean both sides of the panels often. This.



Two types of photovoltaic module structures coexist: Glass-polymer film (also called glass-backsheet) type modules. They are made of glass on the front side and polymer film on the rear side. Polymer film, also known as backsheet, is sometimes incorrectly called Tedlar, although this material.



Double glass components are suitable for

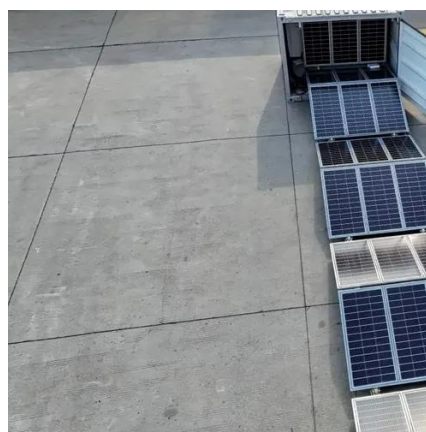


[Double glass solar module , Maysun Solar](#)

As a result, double glass modules are especially suitable for use in islands, at high altitudes, and in extreme climatic regions. If you're looking for an ...

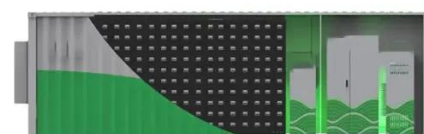
[What does double glass mean for solar panels? , NenPower](#)

The most significant detail here is that double glass structures provide heightened resilience against environmental factors, such as hail, wind, and temperature fluctuations, ...



The Difference Between the Double Glass Photovoltaic Modules ...

Just as its name implies is to point to by two pieces of glass and solar cell composed of composite layer, between cell by wire together in series, in parallel to the pins of the photovoltaic cell ...



[Double-Side Glass Technology in PV Systems: ...](#)

Double side glass in PV systems boosts energy yield, enhances durability, and requires careful installation for optimal solar ...



[What Is Double Glazed Glass and How Does It Work?](#)

Define double glazed glass. Explore the structure, thermal science, and practical benefits for energy efficiency and noise reduction.

[Double glass solar module , Maysun Solar](#)

As a result, double glass modules are especially suitable for use in islands, at high altitudes, and in extreme climatic regions. If you're looking for an efficient and stable photovoltaic solution ...



[2025 Complete Guide to Glass-Glass Solar Panels: The Top ...](#)

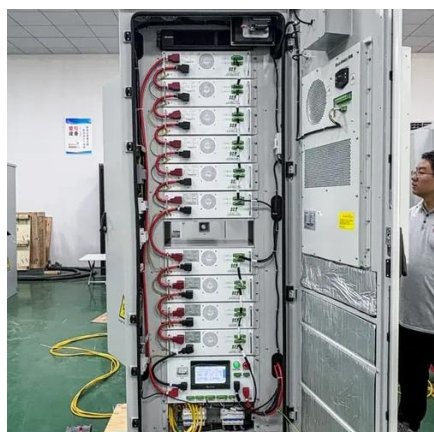
Glass-glass modules offer high fire resistance and strong adaptability, making them suitable for various structural and load-bearing conditions in rooftop installations.





What are the advantages of dual-glass Dualsun modules?

POE (Polyolefin Elastomer), the preferred solution for dual-glass modules. As these materials have different chemical compositions, the lamination parameters and expected properties, ...



Double the strengths, double the benefits

While double glass modules offer numerous benefits, it's essential to consider factors such as weight and installation requirements. Advancements in manufacturing have led ...

How Double Glass Solar Panels Work -- In One Simple Flow ...

These glass layers are designed to withstand environmental stresses like hail, wind, and temperature fluctuations, providing enhanced durability compared to traditional panels.



Double the strengths, double the benefits

While double glass modules offer numerous benefits, it's essential to consider factors such as weight and installation requirements. ...





Single-glass versus double-glass: a deep dive into ...

Double-glass modules, with their performance in the face of salt mist, high temperatures and high humidity, have won the market's favour. ...



Single-glass versus double-glass: a deep dive into module ...

Double-glass modules, with their performance in the face of salt mist, high temperatures and high humidity, have won the market's favour. However, this trend is not ...



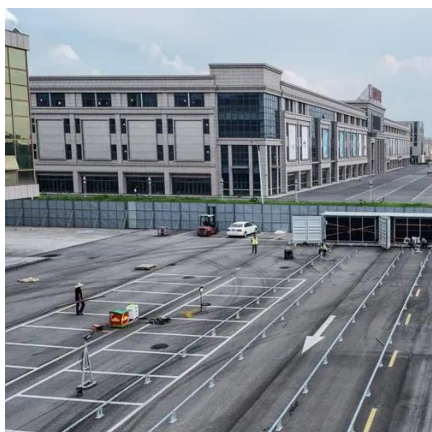
Double-Side Glass Technology in PV Systems: Benefits, ...

Double side glass in PV systems boosts energy yield, enhances durability, and requires careful installation for optimal solar performance.



What does double glass mean for solar panels?

The most significant detail here is that double glass structures provide heightened resilience against environmental factors, such as hail, ...





2025 Complete Guide to Glass-Glass Solar

...

Glass-glass modules offer high fire resistance and strong adaptability, making them suitable for various structural and load-bearing ...





Contact Us

For inquiries, pricing, or partnerships:

<https://sccd-sk.eu>

Phone: +32 2 808 71 94

Email: info@sccd-sk.eu

Scan QR code for WhatsApp.

