



Double glass film for solar panels





Overview

Glass-glass PV modules, also known as double glass solar panels, are photovoltaic modules encapsulated with tempered glass on both the front and back sides. Compared to traditional glass-backsheet modules, they offer greater durability and environmental resistance.

Glass-glass PV modules, also known as double glass solar panels, are photovoltaic modules encapsulated with tempered glass on both the front and back sides. Compared to traditional glass-backsheet modules, they offer greater durability and environmental resistance.

In the ever-evolving world of photovoltaic technology, double glass solar modules are emerging as a game-changer. By encapsulating solar cells between two layers of glass, these modules offer unparalleled durability and efficiency. But what exactly sets them apart?

What are double glass solar.

The bifacial glass-glass modules from the German manufacturer ASWS consist of two glass panes separated by a film. Comparable to a laminated glass windscreen in a car. According to the manufacturer, this improves their properties in terms of stability and service life. ASWS therefore gives a.

Double Glass Solar Panels are frameless solar panels that have glass in the front & glass at the back without using any aluminum frame to support it which gives the solar panel a window glass-like shape. This type of solar panel is a good option for being stacked together for different applications.

The thickness of glass in your solar panels affects everything from energy output to lifespan. Our expert comparison of symmetric vs. asymmetric configurations helps you make the perfect choice for your project. Ever wondered why some solar panels last decades while others fail early?

The secret.

Glass-glass module structures (Glass Glass or Double Glass) is a technology that uses a glass layer on the back of the modules instead of the traditional polymer



backsheet. Originally double-glass solar panels were heavy and expensive, allowing the lighter polymer backing panels to gain most of the.

Double glass solar panels, also known as glass-glass PV modules, are increasingly favored in modern solar installations for their enhanced durability and long-term performance. Unlike conventional panels with a polymer backsheet, double glass panels sandwich the solar cells between two layers of.



Double glass film for solar panels

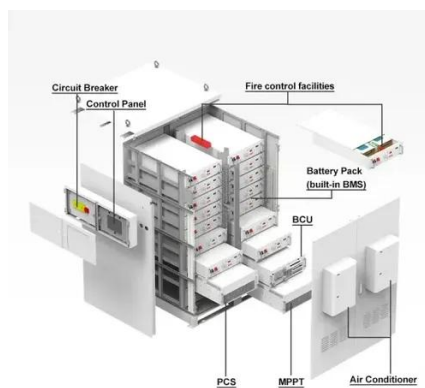


[What are the advantages of dual-glass Dualsun modules?](#)

Dual-glass type modules (also called double glass or glass-glass) are made up of two glass surfaces, on the front and on the rear with a thickness of 2.0 mm each.

Greenakku/ASWS

Transparent bifacial glass-glass modules by ASWS with two panes and film, like laminated car glass. Ideal for efficient solar energy solutions.



[2025 Complete Guide to Glass-Glass Solar Panels: The Top ...](#)

Glass-glass PV modules, also known as double glass solar panels, are photovoltaic modules encapsulated with tempered glass on both the front and back sides. Compared to ...

Double Glass Solar Panel Thickness Guide: Find Your Perfect ...

Compare double glass solar panel thickness configurations for international projects. Includes custom small-format options under 200W for



specialized global applications.

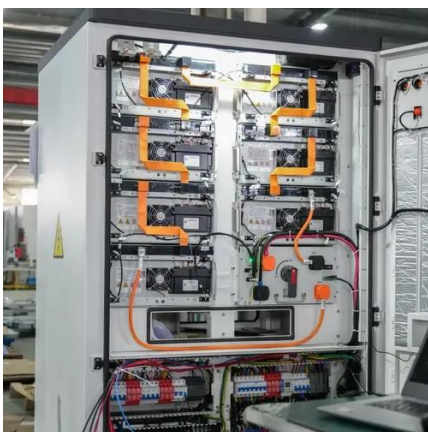


What does double glass mean for solar panels?

Double glass technology has emerged as a transformative development in the solar energy industry, significantly enhancing the ...

Double the strengths, double the benefits

Traditional solar panels typically feature a glass front and a polymer backsheet. In contrast, double glass modules replace the ...



What are Double Glass Solar Panels?

Double-glass solar modules are made up of two layers of tempered glass that cover both sides of the solar panel. As snow ...



Greenakku/ASWS

Transparent bifacial glass-glass modules by ASWS with two panes and film, like laminated car glass. Ideal for efficient solar energy ...



What are Double Glass Solar Panels?

Double-glass solar modules are made up of two layers of tempered glass that cover both sides of the solar panel. As snow accumulates on a typical solar panel or people ...

[2025 Complete Guide to Glass-Glass Solar](#)

...

Glass-glass PV modules, also known as double glass solar panels, are photovoltaic modules encapsulated with tempered glass on ...



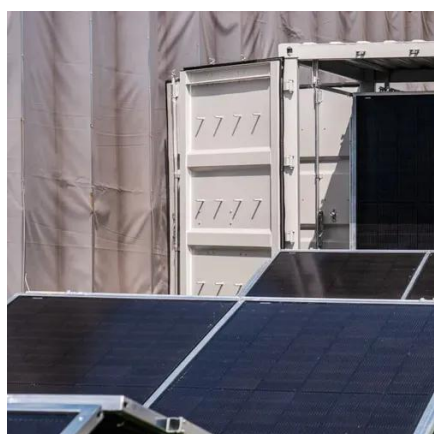
[What does double glass mean for solar panels? , NenPower](#)

Double glass technology has emerged as a transformative development in the solar energy industry, significantly enhancing the efficacy and lifespans of photovoltaic modules.



Double Glass Solar Panel Solutions for All Climates , thlinksolar

Double glass solar panels outperform conventional modules in fire resistance tests due to their non-flammable glass back. This can be crucial for projects requiring certifications ...



Glass-Glass Solar Panel Technology

Double-glazed modules are characterized by increased reliability, especially for large-scale photovoltaic projects. They include better resistance to higher temperatures, humidity and UV ...

Double Glass - SolarFeeds

Double glass solar panels have an extra layer of tempered glass that can protect the solar cells from harsh weather conditions and increase the lifespan of the panels.



Double the strengths, double the benefits

Traditional solar panels typically feature a glass front and a polymer backsheet. In contrast, double glass modules replace the polymer layer with another glass sheet, creating a ...



Double Glass - SolarFeeds

Compare double glass solar panel thickness configurations for international projects. Includes custom small-format options under 200W ...





Contact Us

For inquiries, pricing, or partnerships:

<https://sccd-sk.eu>

Phone: +32 2 808 71 94

Email: info@sccd-sk.eu

Scan QR code for WhatsApp.

