



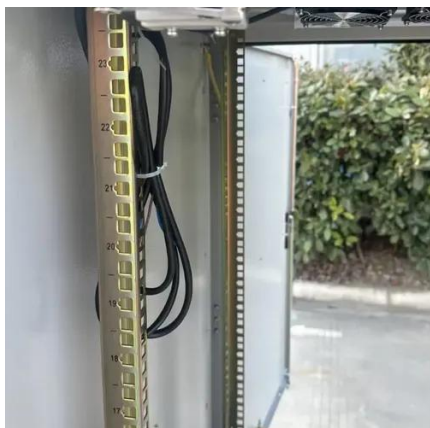
# Dushanbe lithium iron phosphate bms battery





## Dushanbe lithium iron phosphate bms battery

---



### Design of Battery Management System (BMS) for Lithium Iron Phosphate

Lithium iron phosphate battery (LFP) is one of the longest lifetime lithium ion batteries. However, its application in the long-term needs requires specific con

### LifePO4 BMS: The Expert Guide

Learning the fundamentals of LifePO4 BMS technology and functionality will help you get the most from your batteries. This guide ...



### MAOXIN LONG LASTING DURABILITY DUSHANBE LITHIUM ...

In this article, we will compare three leading BMS solutions--JK BMS, JBD Smart BMS, and DALY BMS--to help you choose the right BMS for your lithium-ion (Li-ion) or lithium iron ...

### Design the right BMS for LiFePO4 batteries

Most importantly, to design a safe, stable, and higher-performing lithium iron phosphate battery, you must test your BMS designs early and often,



and pay special attention ...



## Design of Battery Management System (BMS) for Lithium Iron Phosphate

A high-fidelity battery model which considers the battery polarization and hysteresis phenomenon is presented to approximate the high nonlinearity of the lithium iron phosphate ...

## LifePO4 BMS: The Expert Guide

Learning the fundamentals of LifePO4 BMS technology and functionality will help you get the most from your batteries. This guide covers everything a beginner needs to ...



## [How to Choose a BMS for LiFePO4 Cells](#)

In this article, we will guide you through the process of choosing a BMS specifically designed for LiFePO4 cells. Before delving into the selection process, it is essential to understand the ...





## What is LiFePO4 Battery Management System ...

Yes, you can DIY a LiFePO4 lithium battery with a Battery Management System (BMS), but it requires some technical expertise, safety ...

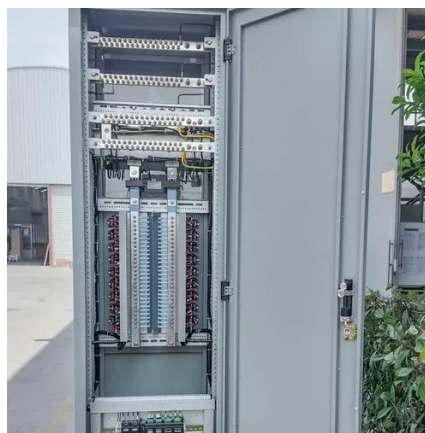


### **Lithium iron phosphate battery**

Lithium iron phosphate (LiFePO<sub>4</sub>) batteries, known for their stable operating voltage (approximately 3.2V) and high safety, have been widely used in ...

### **Smart BMS for lithium iron phosphate battery: Unlocking Safety**

A Smart BMS for lithium iron phosphate battery is vital for safety. This guide explains how an intelligent BMS extends battery life and provides real-time control for all ...



### Dushanbe lithium iron phosphate bms battery

The Smart BMS 12/200 is an all-in-one Battery Management system for Victron Lithium-Iron-Phosphate (LiFePO<sub>4</sub>) Smart Batteries. It has been specifically designed for 12V systems with





## [Design the right BMS for LiFePO4 batteries](#)

Most importantly, to design a safe, stable, and higher-performing lithium iron phosphate battery, you must test your BMS ...



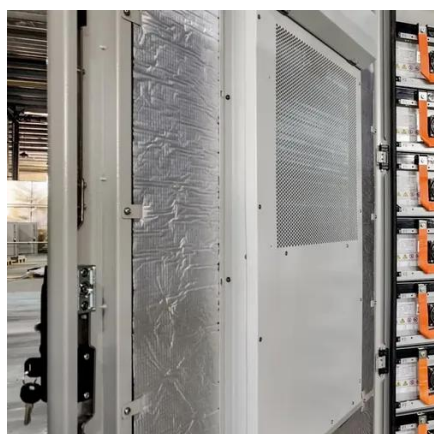
## [MAOXIN LONG LASTING DURABILITY DUSHANBE LITHIUM BATTERY](#)

In this article, we will compare three leading BMS solutions--JK BMS, JBD Smart BMS, and DALY BMS--to help you choose the right BMS for your lithium-ion (Li-ion) or lithium iron ...



## [How to Choose a BMS for LiFePO4 Cells](#)

In this article, we will guide you through the process of choosing a BMS specifically designed for LiFePO4 cells. Before delving into the selection ...



## [Design of Battery Management System \(BMS\) for ...](#)

A high-fidelity battery model which considers the battery polarization and hysteresis phenomenon is presented to approximate the ...



## What is LiFePO4 Battery Management System (BMS) - LiTime-US

Yes, you can DIY a LiFePO4 lithium battery with a Battery Management System (BMS), but it requires some technical expertise, safety precautions, and the right components.



## **Lithium iron phosphate battery**

Lithium iron phosphate (LiFePO<sub>4</sub>) batteries, known for their stable operating voltage (approximately 3.2V) and high safety, have been widely used in solar lighting systems.

## **Design of Battery Management System (BMS) for Lithium Iron ...**

Lithium iron phosphate battery (LFP) is one of the longest lifetime lithium ion batteries. However, its application in the long-term needs requires specific con





## Contact Us

---

For inquiries, pricing, or partnerships:

<https://sccd-sk.eu>

Phone: +32 2 808 71 94

Email: [info@sccd-sk.eu](mailto:info@sccd-sk.eu)

Scan QR code for WhatsApp.

