



Emergency Command Use of Luxembourg Photovoltaic Containers for Exchange





Overview

Luxembourg plans to accelerate the deployment of renewable energies in the country including by promoting agrivoltaics or agri-PV, rooftop solar, and self-consumption, along with issuing competitive tenders, as part of the 51 'concrete measures' it released recently.

Luxembourg plans to accelerate the deployment of renewable energies in the country including by promoting agrivoltaics or agri-PV, rooftop solar, and self-consumption, along with issuing competitive tenders, as part of the 51 'concrete measures' it released recently.

Luxembourg's integrated national energy and climate plan (PNEC) is an important element of the Grand Duchy's climate and energy policy. It sets out the national climate and energy objectives for 2030, as well as the policies and measures needed to achieve them. The measures apply to six sectors.

As part of the Green Deal, which aims to make Europe the first continent to achieve climate neutrality by 2050, Luxembourg is working towards an intermediate target of a 55% reduction in greenhouse gases by 2030. Although the increase of the share of the electric power is ambitious, Luxembourg has.

Luxembourg's energy and climate policy: Integrated National Energy and Climate Plan (NECP) The Integrated National Energy and Climate Plan (NECP) forms the basis of Luxembourg's climate and energy policy and serves as a roadmap that will be put into practice through the adoption of regulations.

The power cut emergency response plan defines the actions that the government should take in the event of a major attack on public and/or private sector energy supply systems (electricity and gas) or a major incident which leads to a significant disruption to energy supplies. The concrete measures.

Solar power containers have emerged as an effective and mobile energy solution that brings electricity to areas where the grid is damaged or nonexistent. Their modular design, fast deployment, and renewable operation make them a valuable asset in emergency and humanitarian missions. A solar power.

Government subsidy for container pv kit in Luxembourg Government subsidy for



container pv kit in Luxembourg The Environment Agency (Administration de l'Environnement) grants subsidies for investments in projects aimed at rationalising the use of energy and promoting the use of renewable energy . How has Luxembourg responded to climate and energy crises?

1. Introduction In response to the climate and energy crises, Luxembourg has continued to work on the implementation of a more sustainable climate and energy policy.

What are Luxembourg's priorities for achieving the necp objectives?

The following are some of the priorities for achieving the objectives set out in Luxembourg's Integrated National Energy and Climate Plan (NECP): Self-consumption and sharing of renewable electricity. Targeted expansion of heat produced by renewable energy: heat pumps will become standard in new and renovated buildings.

Why is Luxembourg focusing on a new energy source?

Although the increase of the share of the electric power is ambitious, Luxembourg has started focusing on developing another energy source as an alternative to the fossil fuels from which 77% of Luxembourg's energy is currently sourced.

Why is Luxembourg a NSEC member?

Luxembourg maintains a close relationship with the European countries of the NSEC to help ensure the security of energy supply in Luxembourg and minimize the country's energy dependence. The Grand Duchy is 100% dependent on its energy imports for oil, 100% for gas and 85% for electricity.



Emergency Command Use of Luxembourg Photovoltaic Containers for

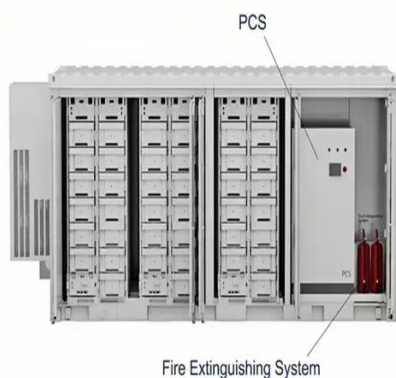


Renewable energy

The Benelux/NSEC provides Luxembourg with access to the sea (in a manner of speaking) and to offshore wind energy. The European ...

Renewable energy

The Benelux/NSEC provides Luxembourg with access to the sea (in a manner of speaking) and to offshore wind energy. The European Commission has estimated that ...



Luxembourg City Emergency Energy Storage Solutions Reliable ...

In an era where energy resilience defines business continuity, Luxembourg City emerges as a strategic hub demanding robust emergency power solutions. This article explores how modern ...

[How Solar Power Containers Support Emergency and ...](#)

Solar power containers have emerged as an effective and mobile energy solution that brings electricity to areas where the grid is damaged or



nonexistent. Their modular design, ...



Power cut emergency response plan

The power cut emergency response plan defines the actions that the government should take in the event of a major attack on public and/or private sector energy supply systems (electricity ...

[: Luxembourg: National Energy and Climate Plan \(NECP\)](#)

The Integrated National Energy and Climate Plan (NECP) forms the basis of Luxembourg's climate and energy policy and serves as a roadmap that will be put into practice through the ...



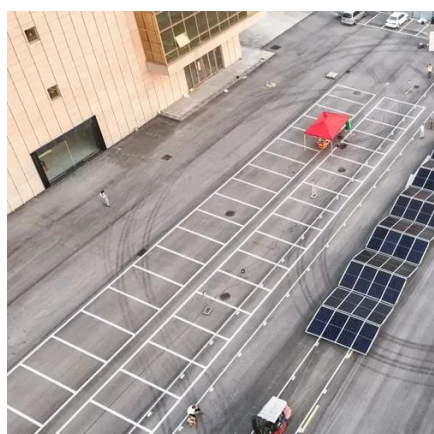
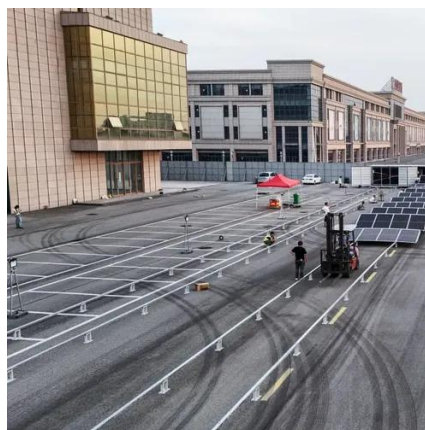
[Government subsidy for container pv kit in Luxembourg](#)

Explore Luxembourg solar panel manufacturing landscape through detailed market analysis, production statistics, and industry insights. Comprehensive data on capacity, costs, and growth.



[Luxembourg Unveils 51 Measures To Accelerate ...](#)

The Ministry of Economy, and the Ministry of Environment, Climate and Biodiversity in Luxembourg released these 51 concrete ...

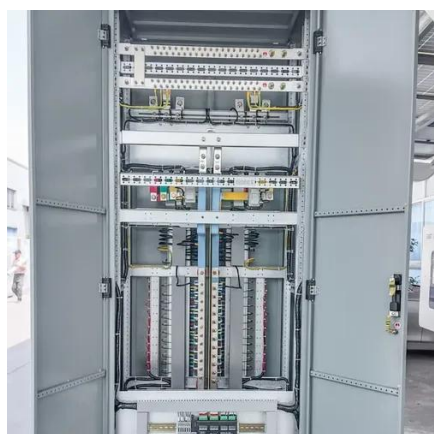
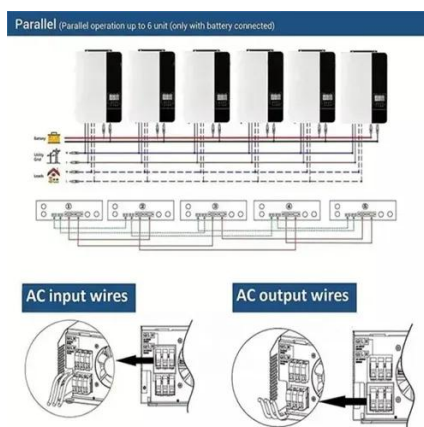


Integrated National Plan energy and climate in Luxembourg ...

regulation (EU) 2018/1993, forms the basis of Luxembourg's climate and energy policy for 2030. Addressing the following five dimensions, namely decarbonisation, including renewable ...

[Luxembourg Unveils 51 Measures To Accelerate RE Deployment](#)

The Ministry of Economy, and the Ministry of Environment, Climate and Biodiversity in Luxembourg released these 51 concrete measures to simplifying and ...



[Renewable energy in Luxembourg , CMS Expert Guides](#)

Are you looking for information on renewable energy in Luxembourg? In this CMS Expert Guide, we tell you everything about it.



[: Luxembourg: National Energy and Climate Plan ...](#)

The Integrated National Energy and Climate Plan (NECP) forms the basis of Luxembourg's climate and energy policy and serves as a roadmap that ...



Luxembourg's integrated national energy and climate plan for the ...

To extend support for energy renovation to all low-energy-performance residential buildings, a national entity to support energy renovation projects, decarbonisation and the ...

[Renewable energy in Luxembourg , CMS Expert ...](#)

Are you looking for information on renewable energy in Luxembourg? In this CMS Expert Guide, we tell you everything about it.





Contact Us

For inquiries, pricing, or partnerships:

<https://sccd-sk.eu>

Phone: +32 2 808 71 94

Email: info@sccd-sk.eu

Scan QR code for WhatsApp.

