



Emergency lighting requires an uninterruptible power supply





Overview

Uninterruptible Power Supply (UPS) Emergency Lighting is a system designed to provide continuous illumination during power outages or emergencies. It integrates a UPS unit with specialized emergency lighting fixtures to ensure essential areas remain lit even during extended blackouts.

Uninterruptible Power Supply (UPS) Emergency Lighting is a system designed to provide continuous illumination during power outages or emergencies. It integrates a UPS unit with specialized emergency lighting fixtures to ensure essential areas remain lit even during extended blackouts.

Emergency lighting requirements derive from provisions of various building codes. Requirements are complex and can be difficult for an electrical engineer to locate in the heat of battle. Know the technical requirements for emergency lighting performance in the absence of utility power. Understand.

This system combines the reliability of UPS units with emergency lighting to provide continuous light, safeguarding lives and minimizing disruptions. In this comprehensive guide, we'll delve into the details of how this technology works, its benefits, components, and how it can be implemented.

This white paper covers background on the various methods of deploying emergency lighting with Avi-on controls, how to specify and install each type, and some unique cost and labor saving opportunities in emergency lighting recently made possible by changes to UL 924 requirements in 2022, and.

UL 924 is the Standard for Safety for Emergency Lighting and Power Equipment, establishing requirements for emergency lighting equipment, unit equipment for emergency lighting, exit signs, and emergency power supply systems. This standard ensures reliable operation during power failures and.

NFPA 110 is the standard for emergency and standby power systems—and it plays a vital role in ensuring your exit signs and emergency lights stay lit during power failures. This guide explains when NFPA 110 applies and what you need to know to keep your system compliant. ⚡ What Is NFPA 110?

NFPA 110.



Whether your building is commercial, multi-residential, a data center, hospital, or other type of facility, an effective emergency lighting system is vital for the safe evacuation of occupants during emergency situations. Trust Mitsubishi Electric UPS to power backup lighting. Mitsubishi Electric.



Emergency lighting requires an uninterruptible power supply



[UPS Power for Emergency and Backup Lighting](#)

With reliable UPS systems powering your emergency lighting systems, you'll be able to navigate outages safely. Learn more about two of our top UPS ...

NFPA 110 Compliance Guide - Emergency Power for Exit Signs & Lighting

NFPA 110 is the standard for emergency and standby power systems--and it plays a vital role in ensuring your exit signs and emergency lights stay lit during power failures. This guide ...



LiFePO ₄
Wide temp: -20°C to 55°C
Easy to expand
Floor mount&wall mount
Intelligent BMS
Cycle Life:≥6000
Warranty :10 years



NFPA 110 Compliance Guide - Emergency Power for Exit Signs ...

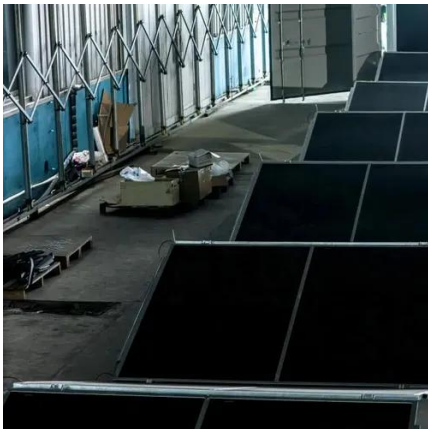
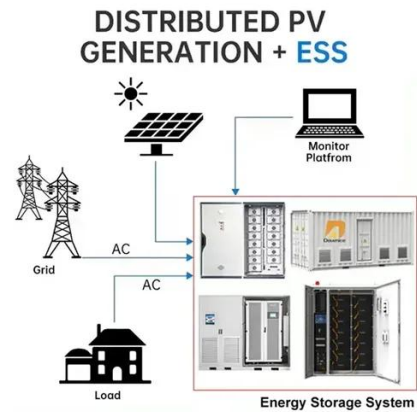
NFPA 110 is the standard for emergency and standby power systems--and it plays a vital role in ensuring your exit signs and emergency lights stay lit during power failures. This guide ...

[NEC Article 700: Emergency Systems \(Sections 700.1 to 700.32\)](#)

This section outlines the scope of Article 700, covering emergency systems that are intended to supply, distribute, and control electricity for



illumination, power, or both during an emergency
...

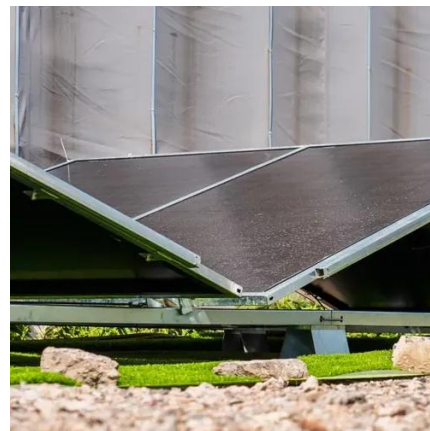


NFPA 101 Section 7.9 Requirements for Emergency Lighting ...

The Code requires that emergency lighting be provided automatically in the event of a power failure resulting from power outages, blown fuses or circuit breakers, or manual ...

26 32 33 Uninterruptible Power Supply (UPS) for Emergency ...

See Standard Drawing, ES71, Emergency Lighting UPS Single-Line Diagram for details. The UPS system shall include a UPS cabinet, external maintenance bypass cabinet (MBC), battery ...



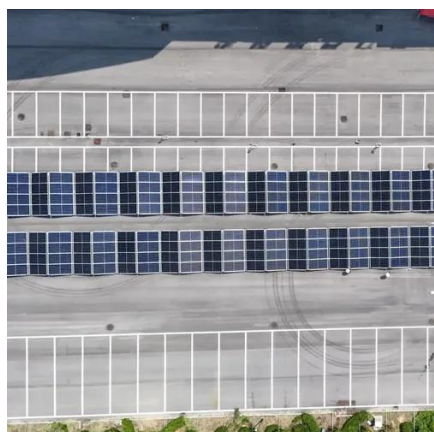
UPS Power for Emergency and Backup Lighting , Mitsubishi Electric

With reliable UPS systems powering your emergency lighting systems, you'll be able to navigate outages safely. Learn more about two of our top UPS models for emergency backup lighting.



Uninterruptible Power Supply Emergency Lighting

One of the most effective solutions to ensure consistent illumination in such situations is Uninterruptible Power Supply Emergency Lighting. This system combines the reliability of UPS ...



Do you know the requirements for emergency lighting systems?

Emergency lighting requirements derive from provisions of various building codes. Requirements are complex and can be difficult for an electrical engineer to locate in the heat of ...

UL 924: Emergency Lighting and Power Equipment Standards ...

This standard ensures reliable operation during power failures and provides the safety requirements for emergency lighting systems in commercial and institutional buildings.



Emergency Lighting Requirements: NFPA 101, UL ...

In the event of a power failure, emergency illumination must be provided for at least 90 minutes. Initial emergency illumination must ...



Emergency Lighting Requirements: NFPA 101, UL 924, and More

In the event of a power failure, emergency illumination must be provided for at least 90 minutes. Initial emergency illumination must average 1 ft-candle but no less than 0.1 ft ...



Emergency-Lighting-UL-924-2022

Devices that passively detect either the presence of emergency power, or the interruption of normal power to trigger emergency mode are no longer allowed. Emergency fixtures will now ...

NFPA 101 Section 7.9 Requirements for ...

The Code requires that emergency lighting be provided automatically in the event of a power failure resulting from power outages, ...





Contact Us

For inquiries, pricing, or partnerships:

<https://sccd-sk.eu>

Phone: +32 2 808 71 94

Email: info@sccd-sk.eu

Scan QR code for WhatsApp.

