



Energy storage batteries for the Irish base station battery factory





Overview

Aghada is the location of ESB's first battery energy storage systems (BESS), providing 19MW (38MWh) of fast-acting energy storage to help provide grid stability in 2022. We opened our second facility at the plant in November 2024, adding 150MW.

Aghada is the location of ESB's first battery energy storage systems (BESS), providing 19MW (38MWh) of fast-acting energy storage to help provide grid stability in 2022. We opened our second facility at the plant in November 2024, adding 150MW.

We currently have more than 300MWs of battery storage capacity in operation in Ireland, making it one of the largest battery portfolios in Europe. We plan to develop a pipeline of large scale battery projects, as well as additional renewable enabling technologies. This is crucial to supporting the.

FuturEnergy Ireland, a joint venture between Coillte and ESB, has been granted planning permission to build Europe's first iron-air battery, a new technology that promises to store renewable energy for weeks while enhancing and supporting the electricity grid. Known as the Ballynahone Energy.

We currently have more than 300MWs of battery storage capacity in operation in Ireland, making it one of the largest battery portfolios in Europe. We have set an ambitious and bold course of action to help Ireland achieve climate action targets and transition the country to reliable, affordable.

The Gorman battery system, with an installed capacity of 50 MW, is our world's first commercial-scale battery system and the first in Ireland. This project is part of our commitment to promoting battery storage as a key driver of the world's energy transition. Energy storage is a key enabler for.

"Energy storage like this major battery plant at the ESB's flagship site in Poolbeg will be a core part of Ireland's new renewable energy transition," Eamon Ryan said. Eamon Ryan (centre) cuts the ribbon to inaugurate the 75MW/150MWh Poolbeg BESS, flanked by ESB's Jim Dollard (left) and Fluence's.

ESB has today opened its latest major battery plant at its Aghada site in Co Cork



which will add 150MW (300MWh) of fast-acting energy storage to help provide grid stability and deliver more renewable power onto Ireland's electricity system. This battery energy storage system (BESS) project is the.



Energy storage batteries for the Irish base station battery factory

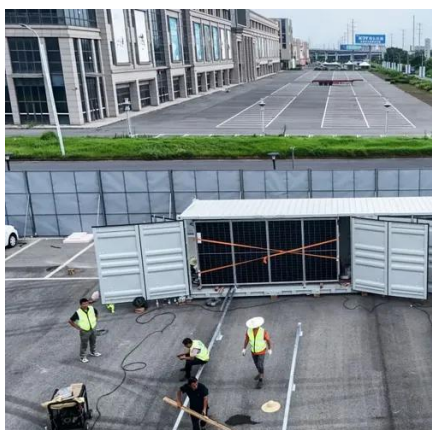


Battery energy storage system

A battery energy storage system (BESS), battery storage power station, battery energy grid storage (BEGS) or battery grid storage is a type of ...

Battery energy storage system

A battery energy storage system (BESS), battery storage power station, battery energy grid storage (BEGS) or battery grid storage is a type of energy storage technology that uses a ...



Battery Storage , RWE in Ireland

Ireland is an excellent starting point for RWE Renewables as we look to expand and grow our battery storage technology business and become a key partner in Ireland's low carbon energy ...

Battery Storage

We currently have more than 300MWs of battery storage capacity in operation in Ireland, making it one of the largest battery portfolios in Europe. We plan to develop a pipeline of large scale ...



Battery Storage , RWE in Ireland

Ireland is an excellent starting point for RWE Renewables as we look to expand and grow our battery storage technology business and become a ...



Battery storage to open new source of energy supply in move to ...

Developers have installed batteries in Ireland capable of storing up to 400 megawatts (MW) of electricity, equivalent to an average power station, but they are used only ...



Gorman Battery

The Gorman battery system, with an installed capacity of 50 MW, is our world's first commercial-scale battery system and the first in Ireland. This project is part of our commitment to ...





New batteries based on rusting will help make Ireland's energy ...

FuturEnergy Ireland, a joint venture between Coillte and ESB, has been granted planning permission to build Europe's first iron-air battery, a new technology that promises to ...



ESB opens Ireland's largest battery storage facility

The fast-responding asset will store energy generated by renewable energy and output it to help balance the grid when required. ...

ESB opens Ireland's largest battery storage facility

The fast-responding asset will store energy generated by renewable energy and output it to help balance the grid when required. The new 2-hour duration lithium-ion (Li-ion) ...



ESB officially opens its latest battery storage project in Co Cork ...

ESB has today opened its latest major battery plant at its Aghada site in Co Cork which will add 150MW (300MWh) of fast-acting energy storage to help provide grid stability ...



Aghada Battery Plant

Aghada is the location of ESB's first battery energy storage systems (BESS), providing 19MW (38MWh) of fast-acting energy storage to help provide grid stability in 2022. We opened our ...



New batteries based on rusting will help make Ireland's energy ...

FuturEnergy Ireland, a joint venture between Coillte and ESB, has been granted planning permission to build Europe's first iron-air battery facility, a new technology that ...



Contact Us

For inquiries, pricing, or partnerships:

<https://sccd-sk.eu>

Phone: +32 2 808 71 94

Email: info@sccd-sk.eu

Scan QR code for WhatsApp.

