



# Energy storage power station voltage requirements





## Overview

---

Most grid operators require storage systems to operate within strict voltage parameters (typically 11kV-33kV for medium-scale installations). But here's the rub: battery racks typically output 400-800V DC. This voltage gap creates conversion losses that can chew through 12-15% of.

Most grid operators require storage systems to operate within strict voltage parameters (typically 11kV-33kV for medium-scale installations). But here's the rub: battery racks typically output 400-800V DC. This voltage gap creates conversion losses that can chew through 12-15% of.

What is the input voltage of the energy storage power station?

The input voltage of an energy storage power station varies based on specific design parameters, applications, and technologies. 1. Common ranges include 110V to 400kV, depending on the scale and type of energy storage system employed.

ers lay out low-voltage power distribution and conversion for a b de ion - and energy and assets monitoring - for a utility-scale battery energy storage system entation to perform the necessary actions to adapt this reference design for the project requirements. ABB can provide support during all.

Ever wondered why energy storage power stations often use 10kV voltage for grid connection?

It's like choosing the right gear for your car - too low and you'll stall, too high and you'll waste fuel. The voltage of energy storage power station systems directly impacts efficiency, stability, and even.

The answer often lies in energy storage power station voltage level configurations. According to BloombergNEF's 2023 energy storage report, 38% of delayed renewable projects face voltage compatibility issues. Let's unpack this critical yet overlooked aspect of modern energy systems. Most grid.

An overview of the relevant codes and standards governing the safe deployment of utility-scale battery energy storage systems in the United States. This document



offers a curated overview of the relevant codes and standards (C+S) governing the safe deployment of utility-scale battery energy storage.

Battery storage power stations store electrical energy in various types of batteries such as lithium-ion, lead-acid, and flow cell batteries. These facilities require efficient operation and management functions, including data collection capabilities, system control, and management capabilities.



## Energy storage power station voltage requirements

---

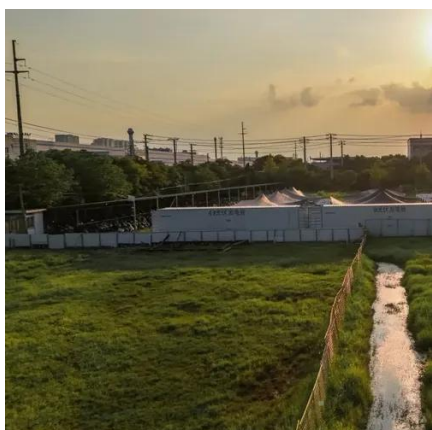
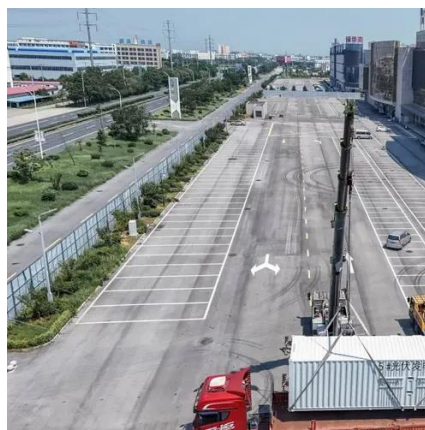


### Energy Storage Power Station System Requirements: What You ...

The system requirements for these behemoths could make even seasoned engineers break out in a cold sweat. From battery chemistry conundrums to grid synchronization headaches, we're ...

### [U.S. Codes and Standards for Battery Energy Storage Systems](#)

This document offers a curated overview of the relevant codes and standards (C+S) governing the safe deployment of utility-scale battery energy storage systems in the United States.



### Voltage Levels in Energy Storage Power Stations: What You ...

Most grid operators require storage systems to operate within strict voltage parameters (typically 11kV-33kV for medium-scale installations). But here's the rub: battery racks typically output ...

### [What is the input voltage of the energy storage ...](#)

Different energy storage technologies operate under distinct principles and consequently require varying input voltage levels. For ...



## [Battery storage power station - a comprehensive guide](#)

This article provides a comprehensive guide on battery storage power station (also known as energy storage power stations). These facilities play a crucial role in modern power grids by ...



## [Requirements and specifications for the construction of ...](#)

Incorporating energy storage into DCFC stations can mitigate these challenges. This article conducts a comprehensive review of DCFC station design, optimal sizing, location



## **What is the input voltage of the energy storage power station?**

Different energy storage technologies operate under distinct principles and consequently require varying input voltage levels. For instance, batteries, flywheels, and ...



## Utility-scale battery energy storage system (BESS)

Battery storage systems are emerging as one of the potential solutions to increase power system flexibility in the presence of variable energy resources, such as solar and wind, due to their ...



### ESS



### GB/T 36547-2024

This document applies to newly built, renovated, and expanded electrochemical energy storage power stations connected to the public grid at voltage levels of 10(6) kV and ...

## Grid Application & Technical Considerations for Battery Energy Storage

The article also highlights voltage support, demonstrating how strategically placed storage systems can replace traditional reactive power generation and improve grid reliability.



## Understanding Voltage in Energy Storage Power Stations: A ...

Ever wondered why energy storage power stations often use 10kV voltage for grid connection? It's like choosing the right gear for your car - too low and you'll stall, too high and you'll waste fuel.



## Contact Us

---

For inquiries, pricing, or partnerships:

<https://sccd-sk.eu>

Phone: +32 2 808 71 94

Email: [info@sccd-sk.eu](mailto:info@sccd-sk.eu)

Scan QR code for WhatsApp.

