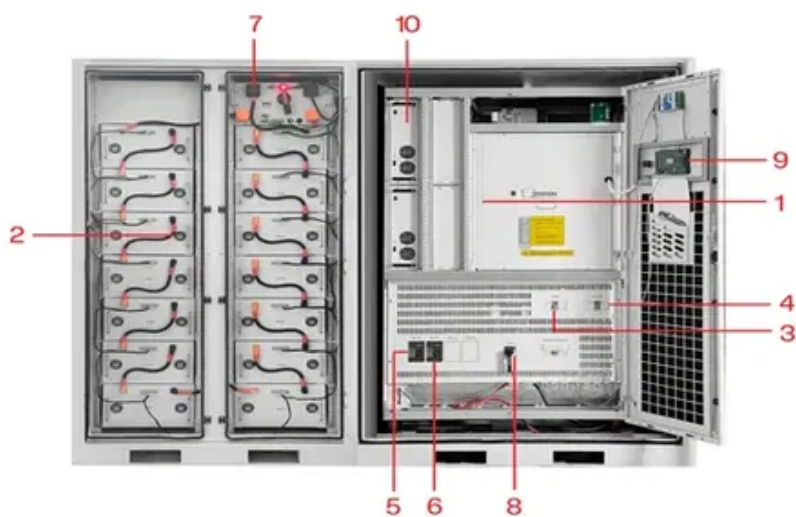




Enterprise double glass components



- | | | | |
|---|---------------------------|----|---------------------------|
| 1 | PCS Module | 6 | OPV2 side circuit breaker |
| 2 | Battery room | 7 | High Volt Box |
| 3 | Grid side circuit breaker | 8 | BAT side circuit breaker |
| 4 | Load side circuit breaker | 9 | LCD display screen |
| 5 | OPV1 side circuit breaker | 10 | MPPT |





Overview

The primary components of a double-glazed window include the outer pane, inner pane, spacer bar, and sealant. The outer and inner panes are typically made of glass, with a gap between them that is filled with air or gas for insulation.

The primary components of a double-glazed window include the outer pane, inner pane, spacer bar, and sealant. The outer and inner panes are typically made of glass, with a gap between them that is filled with air or gas for insulation.

Glass Enterprises will help you design an array of engineered glass products from doors to railings to canopies and beyond. No matter your requirements, we ensure full compatibility between hardware and glass. Using a full suite of shop drawings, engineering, and industry knowledge, we can offer.

Try our interactive commercial door builder. Build, Quote, and Order Today! Explore our premium 72" x 84" double commercial glass door kits — fully preconfigured and hardware-complete entry systems for high-traffic retail, office, and public entrances. Each kit includes a pair of factory-glazed.

DGU glass or double-glazing units comprise two panes of glass, are separated with a spacer, and filled with argon gas between the two layers of glass. The double-glazed glass suppliers providing dual-glazed glass that easily fits into the window frame comprise seven main components. A Space Bar:.

Understanding the parts of a double glazed window can simplify both installation and maintenance. A clear visual representation helps to identify each component's role in ensuring insulation and energy efficiency. The window typically consists of two panes of glass, separated by a spacer bar that.

Double-glazed glass, often referred to as an Insulated Glass Unit (IGU), is a common construction element designed to significantly improve a building's thermal performance. This specialized glass assembly consists of two individual panes of glass separated by a measured space, known as the cavity.

Our Elite Glass Wall Solutions optimize the power of natural light, acoustical performance and most importantly, people. Elite Glass Walls include single glass, double glass and curved wall solutions. Elite Glass Walls provide efficiencies that



reduce consumption. Items are locally sourced. All.



Enterprise double glass components



General Glass GGI is a leader in the fabrication and distribution of

We fabricate and distribute architectural glass. Over the last 120 years, our "Can Do" attitude has made us the "Go To" glass supplier for leading architects, designers, and glazing contractors.

HOME

GAMCO Corporation manufactures a wide variety of custom quality fenestration systems and architectural metal components for commercial, institutional and residential properties.



[What Is Double Glazed Glass and How Does It Work?](#)

Define double glazed glass. Explore the structure, thermal science, and practical benefits for energy efficiency and noise reduction.

[Engineered Glass Products and Hardware](#)

No matter your requirements, we ensure full compatibility between hardware and glass. Using a full suite of shop drawings, engineering, and industry knowledge, we can offer complete ...



Double Storefront Doors , CDF Doors

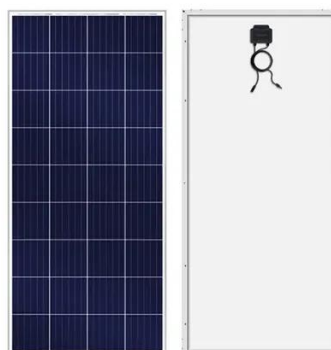
Our commercial double doors are crafted of aluminum in your choice of a bronze or brushed aluminum finish. Choose from four pre-assembled

...



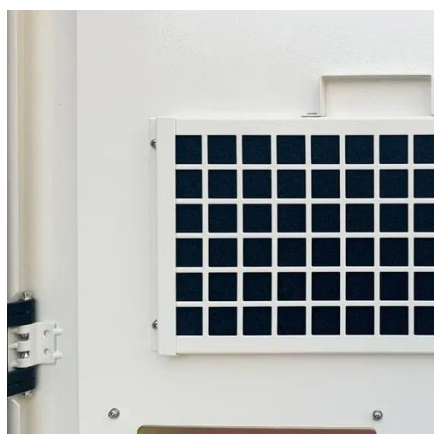
HOME

GAMCO Corporation manufactures a wide variety of custom quality fenestration systems and architectural metal components for commercial, ...



[Double Glazed Window Parts Diagram and Components](#)

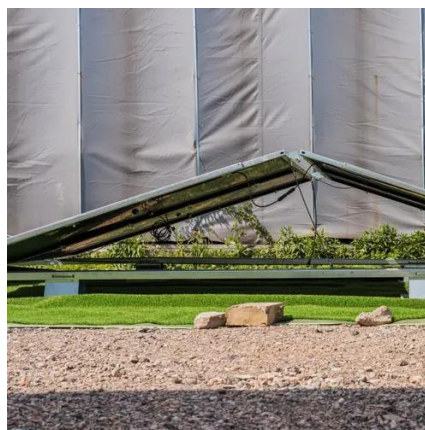
Explore the key components of double glazed windows with a detailed diagram. Learn about their parts, functionality, and design for improved insulation and energy efficiency.





Double Glazed Glass for Commercial Buildings

DGU glass or double-glazing units comprise two panes of glass, are separated with a spacer, and filled with argon gas between the two layers of glass. The double-glazed glass suppliers ...



Elite Glass Walls , Single and Double Glass , PC350

Elite Glass Walls include single glass, double glass and curved wall solutions. Elite Glass Walls provide efficiencies that reduce consumption. Items are locally sourced. All items are made ...

Elite Glass Walls , Single and Double Glass , PC350

Elite Glass Walls include single glass, double glass and curved wall solutions. Elite Glass Walls provide efficiencies that reduce consumption. ...



General Glass GGI is a leader in the fabrication ...

We fabricate and distribute architectural glass. Over the last 120 years, our "Can Do" attitude has made us the "Go To" glass supplier for leading ...



Custom Insulated Glass Units

We deliver custom cut glass, shower, railings and modern glass door systems directly to you. You get premium quality products at incredibly ...



[72x84 Double Glass Door Kits , Complete Commercial Systems](#)

Explore our premium 72" x 84" double commercial glass door kits -- fully preconfigured and hardware-complete entry systems for high-traffic retail, office, and public entrances. Each kit ...

[Double Glazed Glass for Commercial Buildings](#)

DGU glass or double-glazing units comprise two panes of glass, are ...



Double Storefront Doors , CDF Doors

Our commercial double doors are crafted of aluminum in your choice of a bronze or brushed aluminum finish. Choose from four pre-assembled storefront door options. For your ...



Custom Insulated Glass Units

We deliver custom cut glass, shower, railings and modern glass door systems directly to you. You get premium quality products at incredibly lower (and much fairer) prices than you would at a ...





Contact Us

For inquiries, pricing, or partnerships:

<https://sccd-sk.eu>

Phone: +32 2 808 71 94

Email: info@sccd-sk.eu

Scan QR code for WhatsApp.

